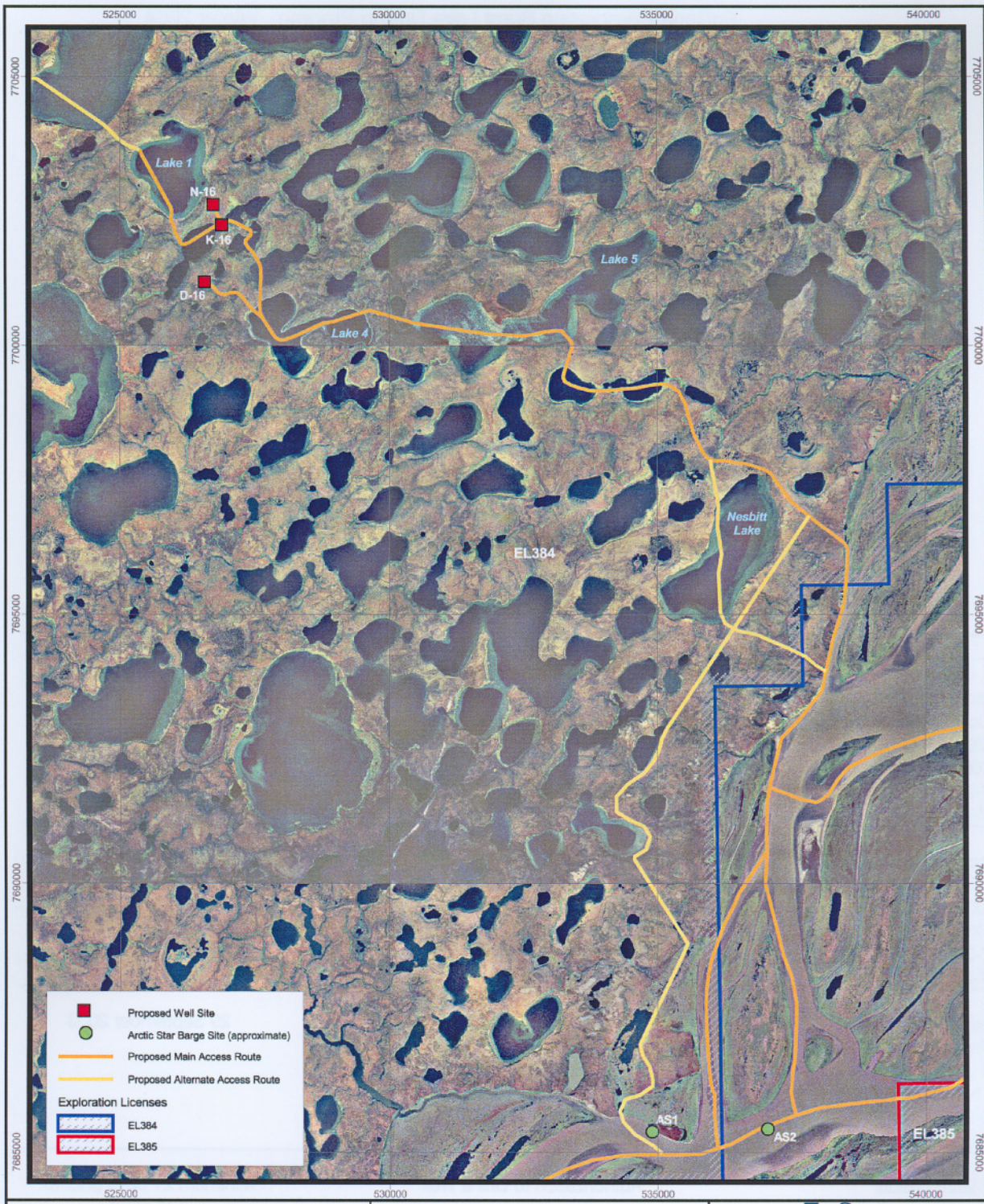


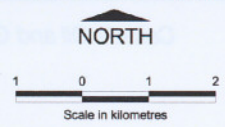
FIGURE 1 PROPOSED WELL SITE LOCATION



	Proposed Well Site
	Arctic Star Barge Site (approximate)
	Proposed Main Access Route
	Proposed Alternate Access Route
Exploration Licenses	
	EL384
	EL385

ENCANA CORPORATION

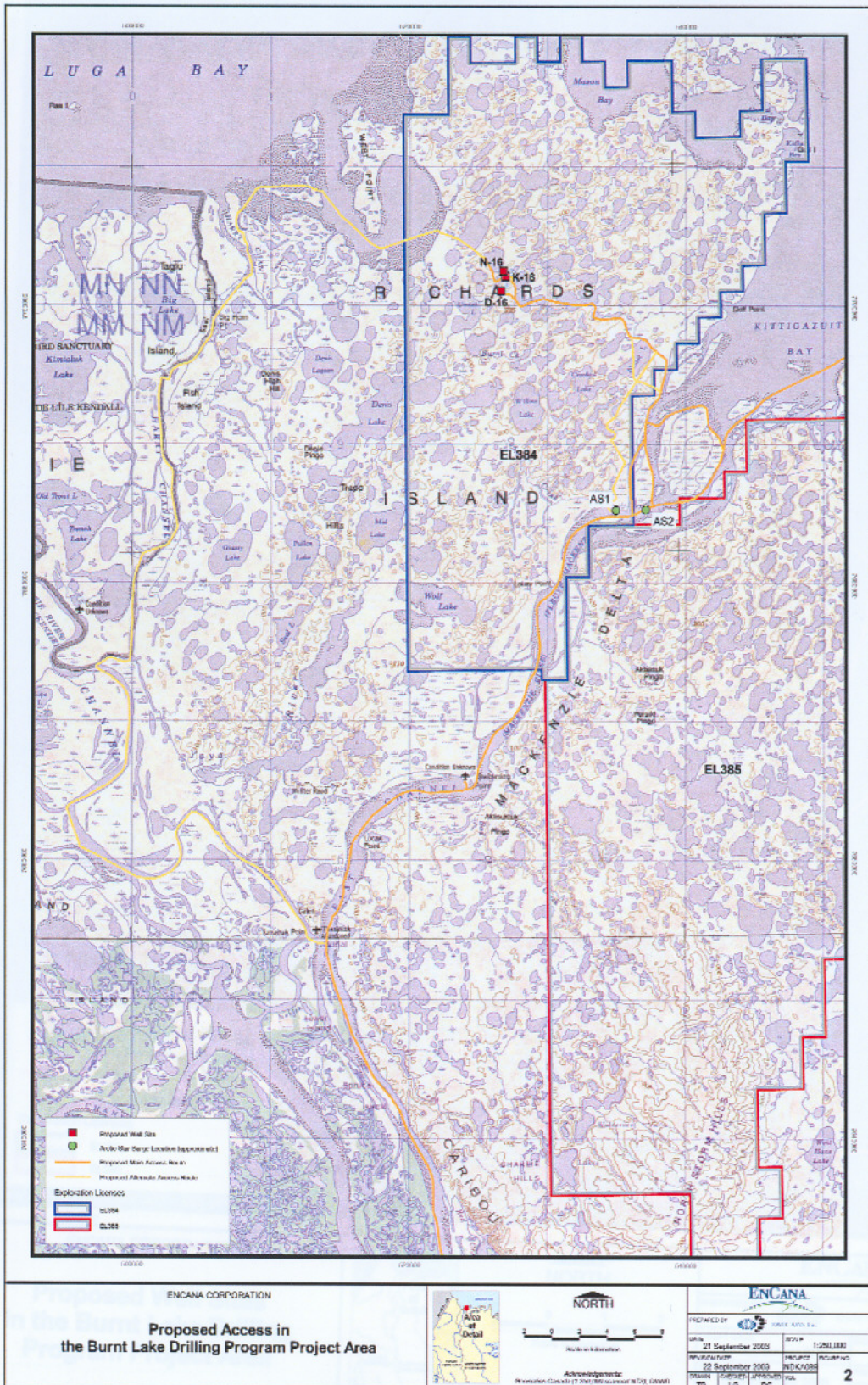
**Proposed Well Sites
in the Burnt Lake Drilling
Program Project Area**



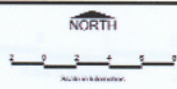
Acknowledgements:
Tarin Resource Services Ltd.; DIAND.

PREPARED BY KWIK-AXYS Inc.	
DRAFT DATE 17 September 2003	SCALE 1:100,000
REVISION DATE 22 September 2003	PROJECT FIGURE NO. NDKA089 1
DRAWN TB	CHECKED LG
APPROVED DC	VOL

FIGURE 2 PROPOSED ACCESS ROUTES



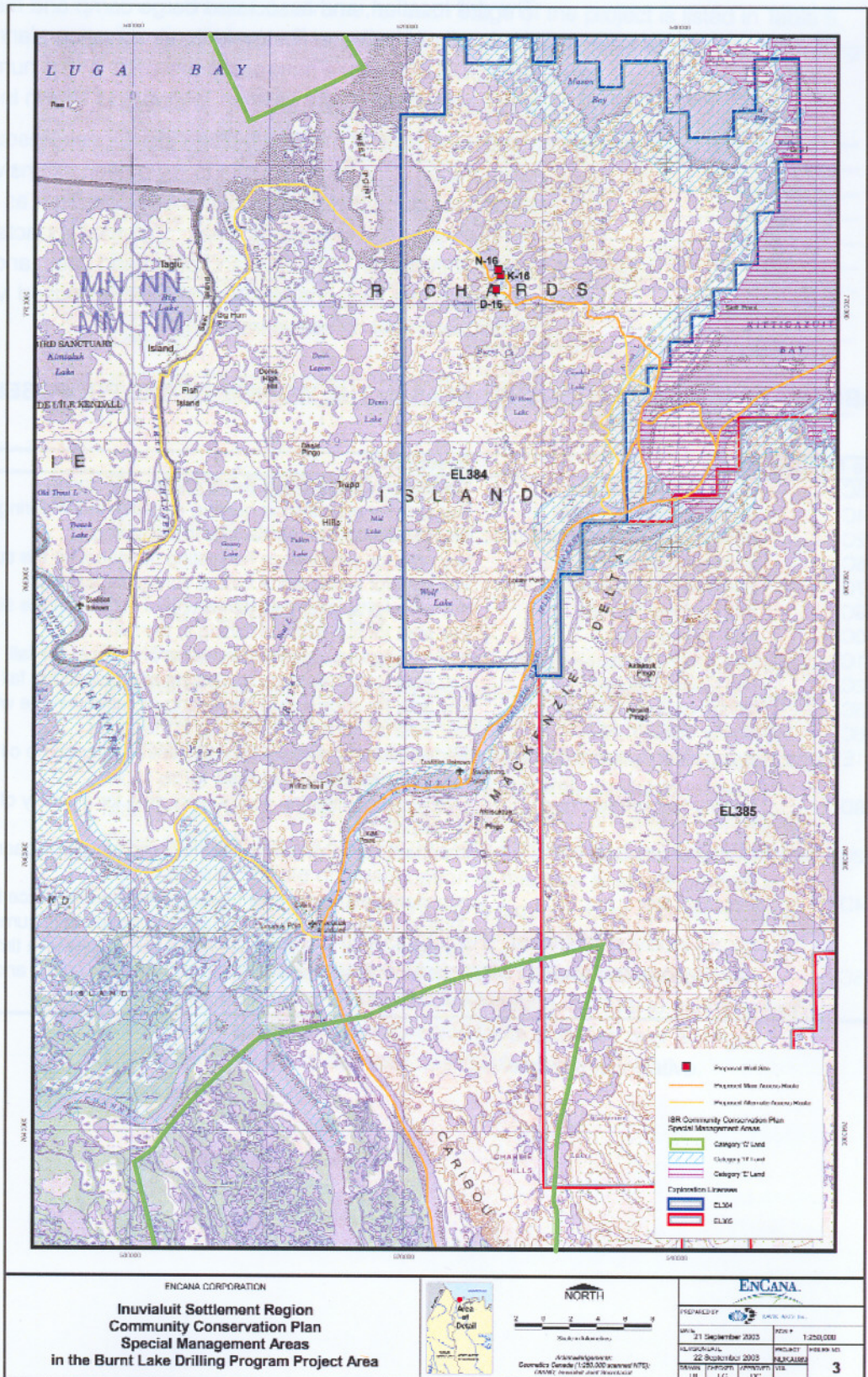
ENCANA CORPORATION
**Proposed Access in
 the Burnt Lake Drilling Program Project Area**



Acknowledgements:
 Resources Canada (77-200) Mineral Survey W/DL (2000)

ENCANA	
PREPARED BY	ENCANA GEOLOGICAL SERVICES
DATE	21 September 2003
REVISION/DATE	09 September 2003
SCALE	1:250,000
UNIT	ENCANA
PROJECT NO.	2

FIGURE 3 SPECIAL MANAGEMENT AREAS IN THE BURNT LAKE DRILLING PROJECT AREA



ENCANA CORPORATION
**Inuvialuit Settlement Region
 Community Conservation Plan
 Special Management Areas
 in the Burnt Lake Drilling Program Project Area**



NORTH

0 2 4 6 8 10

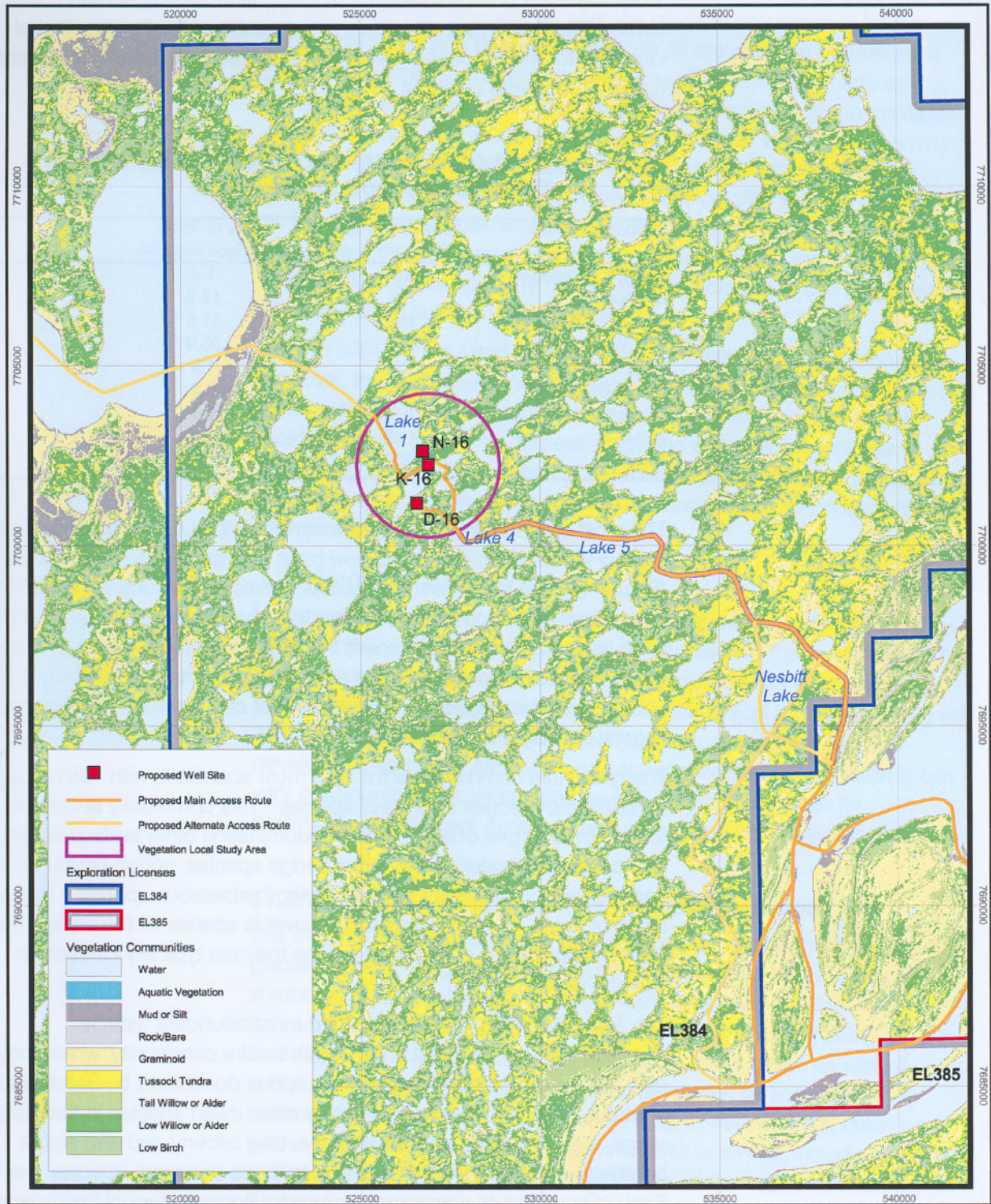
Kilometers

Scale: 1:250,000

Geographic Information System
 Courtesy: Canada (1:250,000 unmodified) / ITR
 ENCANA: Inuvialuit Settlement Region

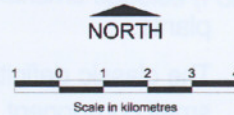
ENCANA	
PROJECT	ENCANA 2003-04
DATE	21 September 2005
SCALE	1:250,000
PROJECT	INUVIALUIT SETTLEMENT REGION COMMUNITY CONSERVATION PLAN
DATE	22 September 2005
SCALE	1:250,000
PROJECT	IBR
DATE	18
SCALE	LG
PROJECT	UC
DATE	3

FIGURE 4 Vegetation Communities in the Burnt Lake Drilling Program Project Area



ENCANA CORPORATION

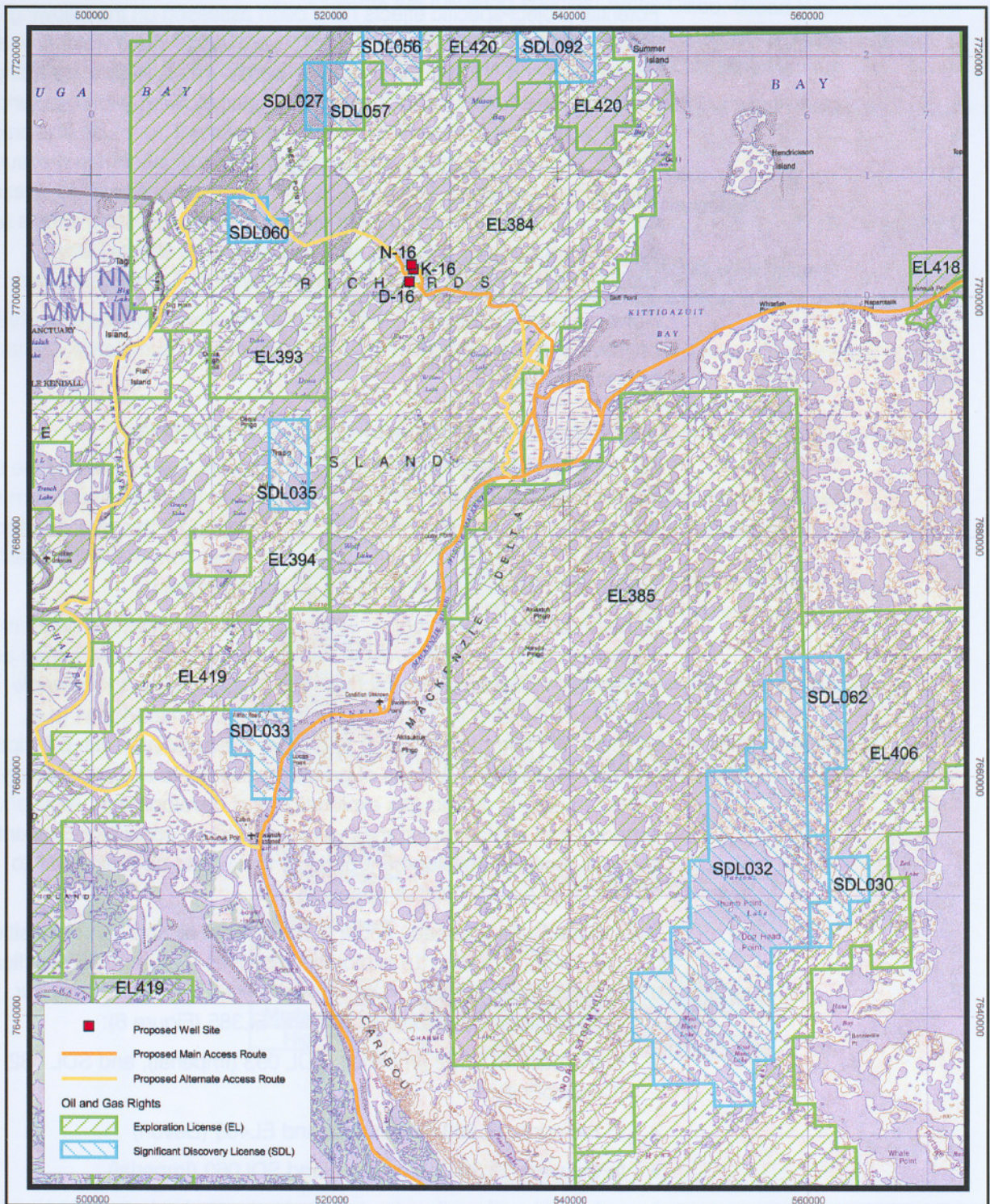
Vegetation Communities in the Burnt Lake Drilling Program Project Area



Acknowledgements:
DIAND, IEG.

ENCANA			
PREPARED BY			
DRAFT DATE	19 September 2003	SCALE	1:150,000
REVISION DATE	22 September 2003	PROJECT	NDKA089
DRAWN	CHECKED	APPROVED	FIGURE NO.
TB	LG	DC	4

FIGURE 5 BURNT LAKE DRILLING PROGRAM PROJECT INTERACTIONS



<p>ENCANA CORPORATION</p> <p>Burnt Lake Drilling Program Project Interactions</p>		<p>Area of Detail</p>	<p>NORTH</p> <p>5 0 5 10</p> <p>Scale in kilometres</p> <p>Acknowledgements: Geomatics Canada (1:250,000 scanned NTS); DIAND.</p>	<p>ENCANA</p> <p>PREPARED BY KAVIK-AXYS Inc.</p> <p>DRAFT DATE: 22 September 2003</p> <p>REVISION DATE:</p> <p>SCALE: 1:450,000</p> <p>PROJECT: NDKA089</p> <p>FIGURE NO.: 5</p> <table border="1"> <tr> <td>DRAWN</td> <td>CHECKED</td> <td>APPROVED</td> <td>VOL</td> </tr> <tr> <td>TB</td> <td>LG</td> <td>DC</td> <td></td> </tr> </table>	DRAWN	CHECKED	APPROVED	VOL	TB	LG	DC	
DRAWN	CHECKED	APPROVED	VOL									
TB	LG	DC										