

400 - 4th Avenue SW  
P.O. Box 100, Station M  
Calgary, Alberta T2P 2H5  
TEL (403) 691-3111



**Camp Farewell , Niglintgak Site, Kittigazuit Bay**  
**Emergency Response Plan**

**JANUARY 2007**



THIS PAGE IS INTENTIONALLY BLANK

---

## GENERAL EMERGENCY RESPONSE PLAN 2006/2007 Winter Field Program

---

**This is a controlled document.**

This general emergency response plan inclusive of spill contingency plans for liquid and sewage. It is effective from January 1, 2007 to November 30, 2007. It applies to Camp Farewell which is located in the Northwest Territories along the east shore of the MacKenzie River – Middle Channel, 50 km downstream from Tununuk Point at Longitude 69°-12'-30" and Latitude 135°-06'-04".

This is a support document to the Emergency Response Plan as outlined in the 2006/2007 Winter Field Program Permit Applications

License number from Northwest Territories Water Board is N7L1-1762 License type B

### -Controlled Document Distribution

Copy 1	Dave Widdifield
Copy 2	Site Supervisor
Copy 3	Camp Supervisor
Copy 4	Safety Co-coordinator

For additional copies of this Controlled Document Contact

Dave Widdifield  
Shell Canada Limited  
P.O. Box 100, Station M  
400 4<sup>th</sup> Ave. SW  
Calgary, Alberta  
T2P 0J4

THIS PAGE IS INTENTIONALL BLANK.

## Table of Contents

1. OVERVIEW & KEY PRINCIPLES.....	7
<b>1.1 General Emergency Response Plan : Purpose .....</b>	<b>7</b>
<b>1.2 Different ERP's : Linkages.....</b>	<b>8</b>
<b>1.3: Projects &amp; Worksite Management.....</b>	<b>9</b>
2. GENERAL EMERGENCY RESPONSE PLAN.....	11
<b>2.1 General .....</b>	<b>11</b>
<b>2.2 Incident Command System .....</b>	<b>12</b>
<b>2.3 General ERP : Response &amp; Notification .....</b>	<b>18</b>
<b>2.3.1 General Emergency Level I : Low Immediate Impact.....</b>	<b>18</b>
<b>2.3.2 General Emergency Level II : Significant Impact or Potential.....</b>	<b>19</b>
<b>2.4 Project General ERP : Site Specific Information Forms .....</b>	<b>24</b>
<b>2.4.1 Project Emergency Response Plan – Emergency Contact List .....</b>	<b>26</b>
<b>2.4.2 Project Emergency Response: Transportation and Medevac Plan .</b>	<b>34</b>
<b>2.5 Farewell Emergency Response Plans .....</b>	<b>37</b>
<b>2.5.1 Sewage Spill Emergency Response Plan .....</b>	<b>37</b>
<b>2.5.3 Fuel/Spill Emergency Response Plan (Water)/Coast Guard Oil Pollution Emergency Plan .....</b>	<b>42</b>
<b>2.5.5 Fire Procedure Emergency Response Plan .....</b>	<b>46</b>
<b>2.6 Roles of Regulatory Government Agencies .....</b>	<b>48</b>
<b>2.6.1 Role of Environment Canada .....</b>	<b>48</b>
<b>2.6.2 Role of Regional Environmental Emergencies Team (REET) .....</b>	<b>48</b>
<b>2.6.3 Role of Response Operations Center (ROC).....</b>	<b>49</b>
<b>2.6.4 Role of the Canadian Coast Guard (CCG).....</b>	<b>49</b>
<b>2.7 Definitions .....</b>	<b>50</b>
<b>2.7.1 Environmentally Sensitive Areas.....</b>	<b>50</b>
<b>2.8 Available Equipment List.....</b>	<b>52</b>

This page is intentionally blank

---

## 1. OVERVIEW & KEY PRINCIPLES

---

### 1.1 General Emergency Response Plan : Purpose

---

#### General Emergency Response Plan : Purpose

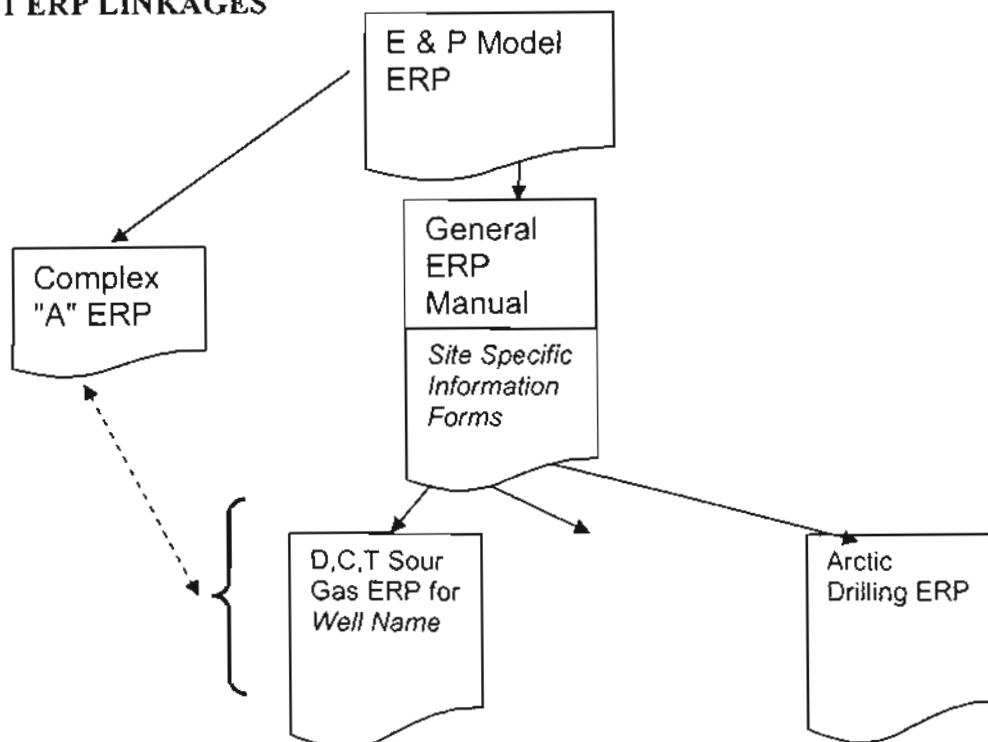
- The purpose of this document is to describe and provide guidelines as to how to handle emergency preparedness and response using the **Incident Command System ICS**.
  - It is a tool for staff and consultants who have ICS training, it is not meant to be a complete training document.
  - These guidelines complement the **Resources Model Emergency Response Plan( ERP)** and provide the link to site specific ERP's .
  - This document provides some brief descriptions of Shell Canada's ERP system; for full explanations refer to the **E & P Model Emergency Response Plan**.
  - Emergencies related to sour gas are not addressed in this document. Refer to site-specific emergency response plans or applicable Complex-specific emergency response plans.
-

## 1.2 Different ERP's : Linkages

### Different ERP's : Linkages

- Virtually all activities relate to projects.
- ALL PROJECTS general emergencies will be managed as per this General Emergency ERP.
- ALL PROJECTS will have site specific information forms completed (refer to 2.4 General ERP Site Specific Information Forms)
- In addition, many projects are more complex and have specific ERP's to cover specific emergencies :
  - **Drilling, Completing, Testing Sour Gas ERP:** drilling and completions projects involving sour gas H<sub>2</sub>S. Focuses on response with the public off site (notification, evacuation, roadblocks, etc). These are often linked to Shell Operating Complex ERP's.
  - **Marine Seismic :** focuses on the specific vessel and location of the survey
  - **Arctic Drilling:** focuses on the cold weather issues, remoteness issues, and spill response issues.

FIGURE 1.1 ERP LINKAGES





## 1.3 Projects & Worksite Management

---

### Activities : Projects

- The actual work is conducted by contractors at field locations remote from office locations. These worksites are managed by a Site supervisor.
  - On some worksites, an emergency could be managed using the contractor's ERP; however the Site supervisor would still be responsible to ensure it is adequately implemented and addresses the emergency.
-



---

## 2. GENERAL EMERGENCY RESPONSE PLAN

---

### 2.1 General

---

#### General

- All worksites must be prepared to handle minor emergencies (General Emergency Level I: medical, fire, spill, etc), and have a response plan for them.
  - They are typically handled by personnel on site, but could escalate to impact off-site.
  - The following is the general Incident Command activation and response . based on the Level of the emergency.
  - This General Emergency ERP does **not apply to major Sour Gas Emergencies**; these are covered by site specific Drilling, Completing, Testing Sour Gas ERP's or Complex ERP's.
  - For emergencies not listed, apply the appropriate Level of response as per the general level description.
  - Each project will have **Site Specific Information Forms** (see section 2.4) to capture current information :
    - General ERP : Emergency Contact List
    - General ERP : Transportation Plan
    - General ERP : Spill Plan
    - Phone List
  - It is the Shell Site Supervisor's responsibility to have on site :
    - General Emergency ERP
    - current Site Specific Information Forms (see 2.4)
    - additional project specific ERP's as required , appropriate Shell Complex ERP if the project will call upon that ERP.
-

---

## 2.2 Incident Command System

---

**Incident Command System  
(exert from the Resources  
Model Emergency  
Response Plan)**

- All emergencies are handled using the Incident Command System
- The Incident Command System (ICS) is an all-risk system that is Flexible and Adaptable to all EMERGENCIES.
- The system consists of actions that command and control personnel, facilities, equipment and communications.
- It is designed to be activated for ALL EMERGENCIES regardless of the size, from the time an incident occurs until the requirement for Management and Operations no longer exists.
- The structure of the Incident Command System (ICS) can be expanded or contracted depending upon the changing conditions of the emergency incident.

---

**Incident Command System  
: KEY OPERATIONAL  
FACTORS**

- See Figure 2.2 TYPICAL FIELD BASED COMMAND POST ORGANIZATION
  - Assigns overall authority to one individual, the **Incident Commander**. For Worksite emergencies, the initial Incident Commander is the **Shell Site Supervisor**
  - Provides structured authority, roles and responsibilities during emergencies.
  - Provides for manageable span of control.
  - Co-ordinates all incident scene operations.
  - Prevents freelancing during scene operations.
  - System is simple and familiar and is used routinely at all incidents.
  - Communications are structured.
  - There is a structured system for response and assignment of resources.
  - Provides for expansion, escalation and transfer/transition of roles and responsibilities.
  - Emphasizes safety and health as operational priorities.
-

---

**Incident Command System  
: COMPONENTS**

- Incident Command System (ICS) has a number of components working together interactively to provide the basis for an effective concept of operation.
  - Common terminology.
  - Modular organization.
  - Integrated communications.
  - Unified command structure.
  - Consolidated action plans.
  - Manageable span of control.
  - Designated incident facilities.
  - Comprehensive resource management.

---

**Incident Command System  
: ORGANIZATION AND  
OPERATIONS**

- Incident Command System (ICS) has 5 major functional areas:

**1. COMMAND**

What are the Objectives?

**2. OPERATIONS**

What is being Done to Accomplish the Objectives?

**3. PLANNING**

What has Happened?

Is Happening;

Will Happen.

**4. LOGISTICS**

What is needed to Support Operations?

**5. FINANCE**

What are the Costs?

---

---

**Incident Command System  
: KEY ICS POSITIONS****INCIDENT COMMANDER**

Person in Charge. NOTE: the Incident commander assumes the responsibilities of all the other Key Positions until they are assigned to someone else.

**SAFETY**

Overall Safety.

**LIAISON**

Works with Governmental Agencies.

**PUBLIC INFORMATION OFFICER**

Media. and Crisis Communication

**LOGISTICS**

Orders Resources.

**OPERATIONS**

Actual Working Operations of Incident.

**STAGING**

Pre-Deployment Area.

**PLANNING (PLANS)**

Incident Action Plan.

12 Hour Plan.

Safety and Health Plans.

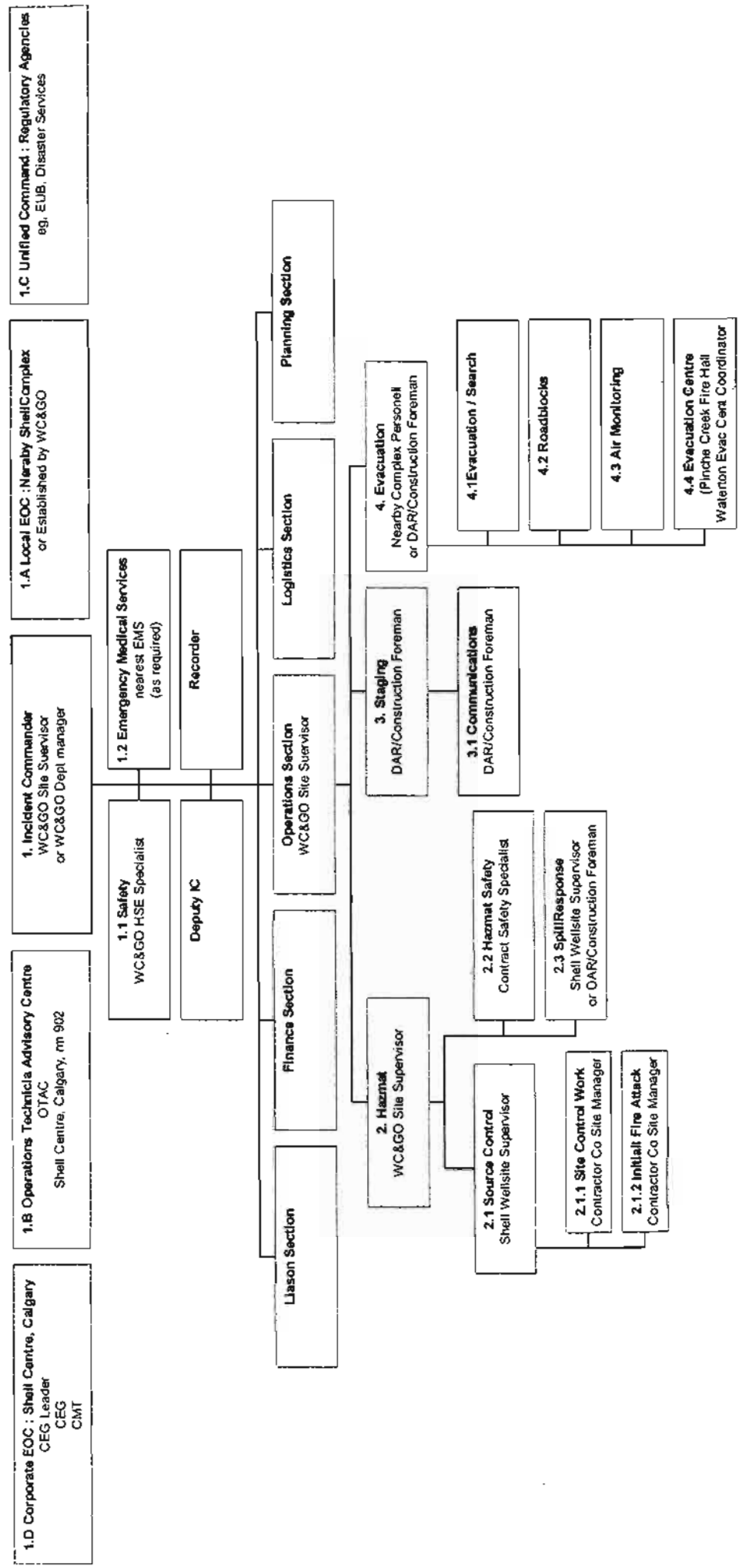
**FINANCE**

Financial Arrangements.

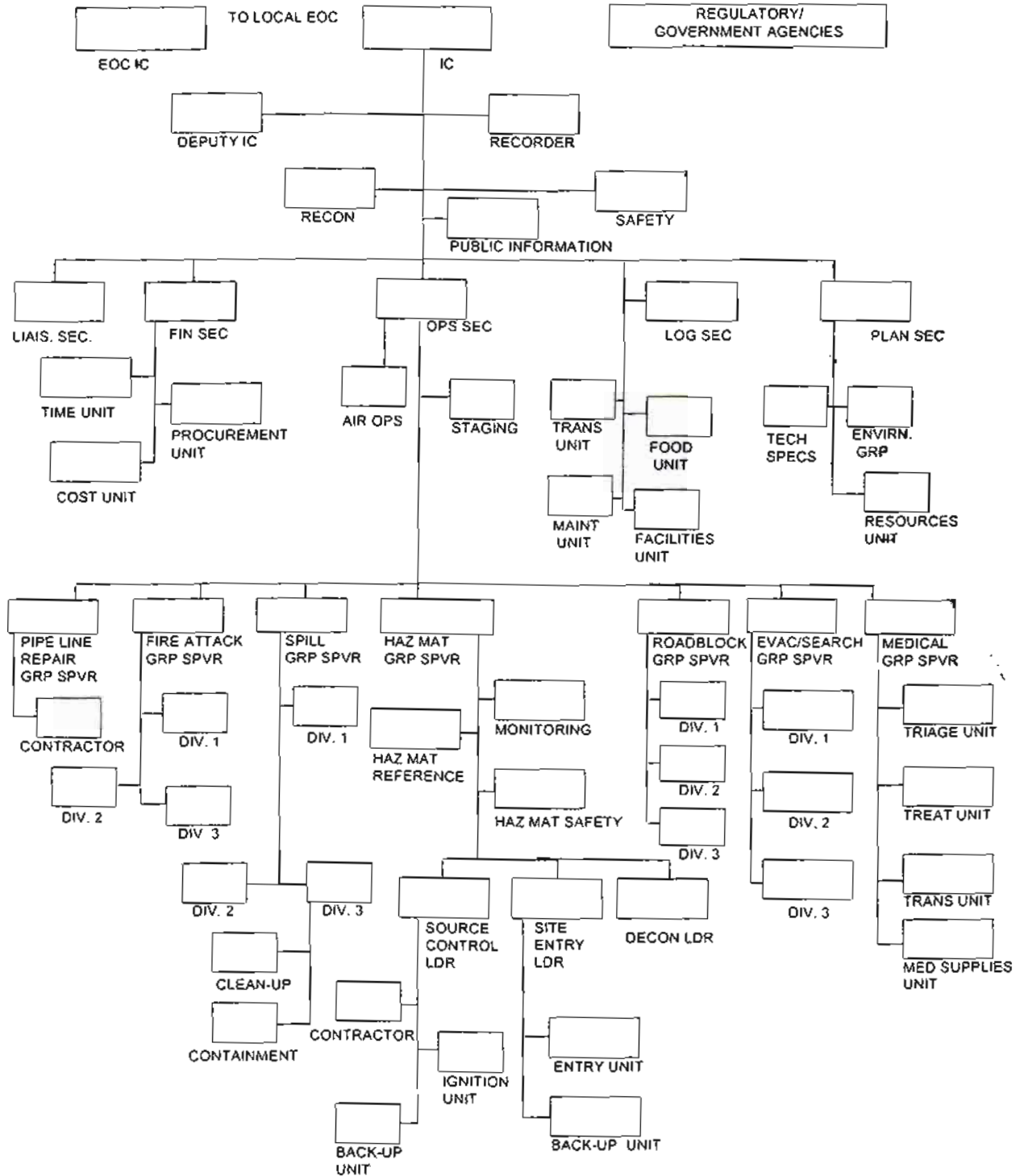
Claims.

---

Figure 2.2 TYPICAL FIELD BASED COMMAND POST ORGANIZATION



**ORGANIZATION CHART - CP**



**KEY**

- ◆ Dotted lines represent communications/support information
- Solid lines represent organizational authority

- SEC = Section
- GRP SPVR = Group Supervisor
- LDR = Leader

**Note:**

- ◆ It is not mandatory to assign all positions.
- ◆ Assign positions only as necessary
- ◆ Some positions may not require activation depending on the actual emergency.





---

## 2.3 General ERP : Response & Notification

---

- The following outline the typical ICS Levels of emergency and corresponding response and notification.
- 

### 2.3.1 General Emergency Level I : Low Immediate Impact

---

#### Typical General Level I Emergencies

- Small, contained, controllable fire / explosion
  - Small, contained, controllable, hazardous materials spill on-site (see Figure 2.3 Environmental Release Reporting Process)
  - Injury requiring medical evacuation.
  - Minor vehicle accident
  - Journey Management : failure to arrive to a remote location, especially during winter
  - H<sub>2</sub>S (Odor complaint or minor sour release that can be immediately contained)
    - most sour gas drilling and completions projects will have a site specific sour gas ERP, which would be implemented.
    - However, if there is no site specific sour gas ERP (e.g., a workover in an existing Shell field), this General ERP , and/or the responsible Shell Complex ERP, would be initiated
- 

#### Typical General Level I Emergencies : Response & Notification

- **Incident Commander : Shell Site Supervisor**
  - Make contacts as appropriate as per the site specific Information forms (see 2.4)
  - Control regained / response action by onsite personnel or local EMS.
  - Odor complaint or minor sour release : contact the Complex, active the **Complex ERP**
  - Report ASAP, after the fact : to Superintendent/Sr. Foremen
-

---

### 2.3.2 General Emergency Level II : Significant Impact or Potential

---

#### Typical General Level II Emergencies

- Any Level I Emergency that escalates beyond the immediate worksite and impacts people outside Shell.
  - Fire or explosion which has spread or cannot be brought under control
  - Fire or explosion as a result of a hazardous material spill onsite
  - Spill offsite or into a water body (see Figure 2.3 Environmental Release Reporting Process)
  - Camp fire requiring evacuation
  - Serious injury that could be life threatening (e.g., head injury)
  - Vehicle accident with serious injury or spill
  - Journey Management : failure to arrive to a remote location, escalating to major search and rescue operations
  - H<sub>2</sub>S (Minor sour release that can not be immediately contained or equipment malfunction that could potentially result in a major release)
    - As with Level I, implement the site specific sour gas ERP or Shell complex ERP
-

---

**Typical General Level II  
Emergencies :****Response & Notification**

- **Initial Incident Commander : Shell Site Supervisor**
    - Notify Immediately : Northern Frontier construction/logistics manager
  - **Construction Logistics Manager: mobilize to site, assume IC responsibilities.**
    - Notify immediately : Department Manager)
  - **Project Department Manager :**
    - Notify immediately : Manager of project
    - Notify immediately : Crisis Evaluation Group **CEG** Leader
  - **Local EOC :**
    - Activate Local Emergency Operations Center (EOC), depending upon the emergency duration, OR potential impact to the public or government (may be **Complex EOC**).
-

---

### 2.3.3 General Emergency Level III : Major Impact or Hazard to Public

---

**Typical General Level III Emergencies**

- Any Level II Emergency that escalates beyond the immediate worksite and impacts the public.
  - Major fire or explosion
  - Serious injury / multiple injured / fatality
  - Major uncontained spill offsite or into a water body ( see Figure 2.3 Environmental Release Reporting Process)
  - H<sub>2</sub>S (Major uncontrolled or partially controlled sour release)
    - As with Level I, implement the site specific sour gas ERP or Shell complex ERP
-

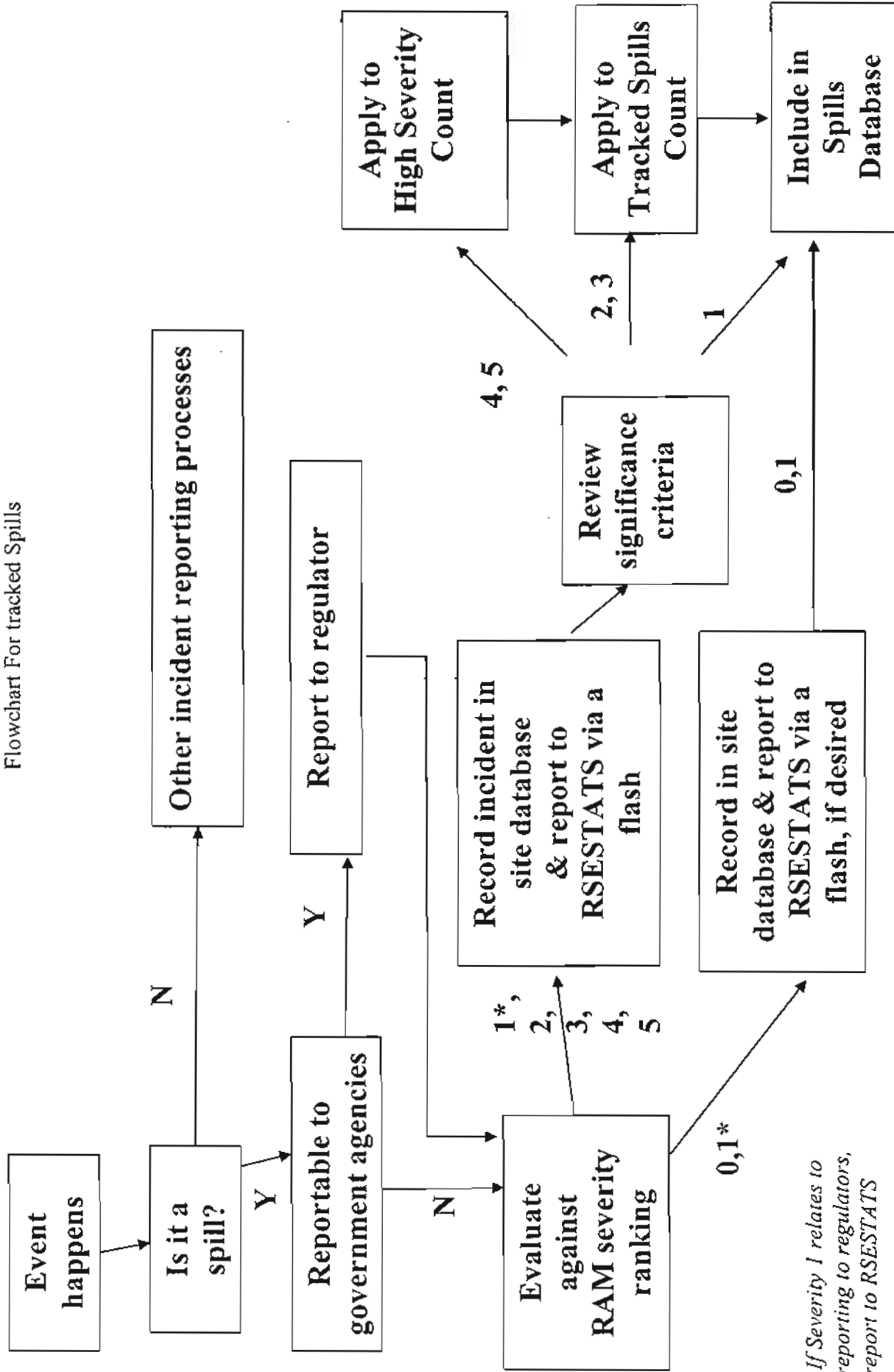
---

**Typical General Level II  
Emergencies :****Response & Notification**

- **Initial Incident Commander : Shell Site Supervisor**
    - Notify Immediately : Construction Manager
  - **Construction Manager:**
    - Notify immediately : Niglintgak Project Manager
  - **Niglintgak Project Manager :**
    - Notify immediately : Manager of Northern Frontier.
  - **Manager of Northern Frontier**
    - Notify immediately : Crisis Evaluation Group **CEG** Leader
    - Notify immediately : Resources Sr. Operating Officer **SOO**
    - Immediately mobilize to Local EOC, assume Local EOC IC responsibilities.
  - **Local EOC :**
    - **Since a Level III emergency WILL have impact offsite during the emergency, and often after the site emergency is under control, a Local EOC should be established to deal with public and government issues.**
    - Local EOC Incident Commander : Northern Frontier Construction logistic Manager
  - **CEG Leader**
    - Activate Crisis Management Team CMT and Corporate EOC as appropriate
    - Contact SOO
    - Notify President and Chief Executive Officer CEO
-



Figure 2.3 Environmental Release Reporting Process  
Flowchart For tracked Spills



\* If Severity 1 relates to reporting to regulators, report to RSESTATS

## 2.4 Project General ERP : Site Specific Information Forms

---

### General

- The following are the Site Specific Information Forms that are required to be completed for all projects.
  - General ERP : Emergency Contact List
  - General ERP : Transportation Plan
  - General ERP : Spill Plan
  - Phone List
- It is the Shell Site Supervisor's responsibility to ensure these forms are complete and current for the project.



THIS PAGE IS INTENTIONALLY BLANK



## 2.4.1 Project Emergency Response Plan – Emergency Contact List

**PROJECT:** Camp Farewell

**LOCATION:** 110 Km NW of Inuvik NWT

LAT: 69 12 35.09

LONG: 135 06 17.286

**DIRECTIONS:** BY AIR 110 KMS NW OF INUVIK OR BY BOAT USING EAST & MIDDLE CHANNELS OF THE MACKENZIE RIVER

**RADIO FREQUENCIES:** RECEIVE 157.47 TRANSMIT 168.15

<b>WORKSITE CONTACTS</b>	<b>NAME</b>	<b>PHONE</b>	<b>FAX</b>
Shell Site Supervisor 1	DAVE BERRY	403 815-6995	
Shell Site Supervisor 2	DON LUSIS	780 719-7780	867 777-
Camp Supervisor		867 777-	867 777-
Yard Supervisor		867 777-	867 777-
MEDIC		867 777-	867 777-
<b>PRIMARY OFFICE CONTACTS</b>			
Shell Canada Limited	800 661-7378		
NIGLINTGAK CONSTRUCTION MANAGER	DAVE Widdifield Cellular Residence	403 218-4689 403 850-4150 403 241-7409	
Project Integration coordinator	Ben Seligman		
HSSD	Roger Leadbeater	403 691-3295 403 519-4138	403 269-7948
Regulatory/Environment Northern Frontier	Kim Johnson	403 691-3439 403 609-0994	
Project Manager	Murray Staden	403 691-3459 403 217-8254	
Manager Frontier Development	Murray Elliott	403 691-4572 403 403 547-3346	
<b>SHELL OPERATIONS TECHNICAL ADVISORY CENTRE</b>			
SHELL CENTRE, CALGARY, ROOM 902			403-691-3104
<b>SHELL EMERGENCY COMMUNICATIONS TRAILER</b>			
CUSTODIAN: C&V - TRAILER YARD, CALGARY			
CONTACT:			

## WC&GO PROJECT EMERGENCY RESPONSE PLAN EMERGENCY CONTACT LIST

<b>GOVERNMENTAL AGENCIES</b>			
<b>RCMP: Local Detachment</b>		<b>867 777-2935</b>	
<b>NWT Forest Fires</b>		<b>800 661-0800</b>	
<b>Poison Control Centre</b>		<b>800 332-1414</b>	
<b>Safety &amp; Public Services</b>		<b>867 777-7399</b>	
<b>NWT 24 hour Spill Report Line</b>		<b>867 920-8130</b>	<b>867 873-6924</b>
<b>NWT Environmental Protection Division</b>		<b>867 873-7654</b>	<b>867 873-0221 -</b>
<b>Regional Operations Center (ROC)</b>		<b>800-265-0237</b>	
<b>Department of Indian and Northern Affairs</b>		<b>867 777-7230</b>	
<b>Indian &amp; Northern Affairs – Inuvik</b>		<b>867 777-3361</b>	
<b>Environment Canada Yellowknife</b>		<b>867 669-4725</b>	
<b>RWED – Environmental Protection Services</b>		<b>867-873-7654</b>	
<b>CANUTEC</b>		<b>613 996-6666</b>	
<b>National Energy Board</b>		<b>403 299-3926</b>	<b>403 292-5875</b>
	<b>Rick Turner</b>	<b>403 299-3868</b>	<b>403 292-5875</b>
	<b>Cellular</b>	<b>403 540 3754</b>	
<b>NEB Staff</b>	<b>John Korec (Office)</b>	<b>403 292-6614</b>	
	<b>John Korec (Home)</b>	<b>403 275-6526</b>	
	<b>Laura Van Ham (Office)</b>	<b>403 299-2769</b>	
	<b>Laura Van Ham (Home)</b>	<b>403 208-0267</b>	
	<b>Andy Graw (Office)</b>	<b>403 299-2790</b>	
	<b>Andy Graw (Home)</b>	<b>403 547-3073</b>	
	<b>Terry Baker (Office)</b>	<b>403 299-2792</b>	
	<b>Terry Baker (Home)</b>	<b>403 239-5032</b>	
<b>Disaster Services / Transportation of Dangerous Goods</b>		<b>1-800-272-9600 (24 HR)</b>	

<b>GOVERNMENTAL AGENCIES</b>		
<b>Disaster Services: Regional Office</b>		
<b>Environment Canada</b>		867-669-4710
<b>Fish and Wildlife area office</b>		867-777 -7230
<b>Department of Fisheries and Oceans</b>		867-777-7520/7521 867-669-4931
<b>NWT WCB</b>		867-902-3888
<b>NWT WATERBOARD</b>		867-765-0106
<b>CWS</b>		867 669-4769
<b>Rescue and Response</b>		867-874-5569
<b>NWT OHS</b>		867-678-2301
<b>NWT OHS (Yellowknife)</b>		800-661-0800

<b>EMERGENCY MEDICAL SERVICES</b>		
<b>AMBULANCES</b>		
<b>INUVIK AMBULANCE SER.</b>	867 777-4444	
<b>LOCAL 2</b>		
<b>HOSPITALS</b>		
<b>INUVIK HOSPITAL</b>	867 777-8000	
<b>HEALTHCARE</b>		
<b>LOCAL 1</b>		

## PROJECT EMERGENCY RESPONSE PLAN EMERGENCY CONTACT LIST

<b>EQUIPMENT / SPECIAL SERVICES</b>			
<b>NEW NORTH NETWORKS</b>			
<b>REPAIRS INUVIK</b>		867 777-2111	
<b>OPERATOR: clearing lines or line interruption</b>		0	
<b>GENERAL INQUIRIES</b>			
<b>SAFETY SERVICES</b>			
<b>United Resources Safety</b>	<b>Emergency Line</b>	1-800-432-1809	24 hr
<b>AIR MONITORING</b>			
<b>MOBILE/DOWNWIND</b>			
<b>Monitrex</b>	<b>Calgary</b>	403-291-3590	24 hr
<b>Splash &amp; Dore Safety Ltd.</b>	<b>Calgary</b>	1-800-264-5691	24 hr
<b>Key Safety Services</b>	<b>Emergency Line</b>	1-866-FIRE - 911	24 hr
<b>Continuous Stationary</b>			
<b>Maxxam Analytical</b>	<b>Calgary</b>	403-291-3077	Working hrs
		403-651-2436	After hrs/ emergency

<b>HELICOPTERS</b>			
<b>Canadian Helicopters</b>	<b>Inuvik</b>	<b>867 777-2424 or</b>	
		<b>867-777-1012</b>	
<b>AKLAK AIR</b>	<b>Inuvik</b>	<b>867-777-3777 or</b>	
		<b>867 777-3555</b>	

THIS PAGE IS INTENTIONALLY BLANK



SITE DIAGRAM:

\*\*Not to Scale  
Diagram may be hand drawn,  
by the word draw program, or  
imported from another source



**North**



THIS PAGE IS INTENTIONALLY BLANK

## 2.4.2 Project Emergency Response: Transportation and Medivac Plan

PROJECT: Farewell

DATE: 21 August, 2002

<p><b><u>EMERGENCY NUMBERS</u></b></p>	<p>Preferred hospital: <b>Inuvik Hospital</b> Number: (867) 777- 8000</p> <p>Preferred Ambulance: <b>Inuvik Ambulance Emergency</b> Number: (867) 777-4444</p> <p>Preferred Police: <b>RCMP</b> Number: (867) 777-2935</p> <p>Preferred Air :Evacuation <b>Canadian Helicopters</b> Number 867 777-2424 867 777-4338</p> <p>Alternate Air: <b>Aklak Air</b> Number 867 777-3777</p>
<p><b>GENERAL INFORMATION</b> Note- If travel distance to Health care facility is:</p> <p><b>CLOSE</b> (&lt; 20 min.) or <b>DISTANT</b> (20 min to 40 min)</p> <p>You may rely on ambulance service from that Health care facility, <u>HOWEVER</u>, if the travel distance of the worksite is greater then 40 min, then it is deemed:</p> <p><b>ISOLATED (&gt;40 min)</b></p> <p>Therefore, you must have transportation that meets the following criteria:</p> <ul style="list-style-type: none"> <li>• Clean</li> <li>• Protects from weather</li> <li>• Equipped with communication</li> <li>• Accommodate a 200 cm stretcher</li> </ul> <p><b>HELICOPTER RESPONSE TIME WILL QUALIFY</b></p>	<p>Type of accident likely to occur: Lacerations, Stips/Trips/Falls</p> <p>Number of workers at site: 15 - 30</p> <p>Distance from a Health Care Facility: greater than 40 min</p> <p>Availability of Ambulance Service: Air evacuation Ambulance emergency response time: Approximately 40min</p> <p>Time of day work is in progress: Day-time</p> <p>Type of transportation needed to get to the worksite: Helicopter or fixed wing</p> <p>Route to site: Flying 110km Northwest of Inuvik</p> <p>Does change in weather effect type of travel? Explain. Increase time by: Depends upon weather. Could be next day.</p>
<p><b>CONTACTS:</b> <b>LOCATION OF PHONES AND RADIOS</b></p>	<ul style="list-style-type: none"> <li>• phones located in offices</li> <li>• hallway</li> <li>• radios on specific personnel</li> <li>• radios in office</li> <li>• specific personnel have cell phones</li> </ul>
<p><b>EMERGENCY CALL</b></p>	<p>Primary responsibility: Medic</p>

<b>RESPONSIBILITY</b>	<p>Secondary responsibility: Shell Site Supervisor</p> <p>Site phone number: 867 777 867 777</p> <p>Radio Frequency: Receive: 157.47 Transmit: 168.15</p>
<b>INFORMATION YOU NEED TO HAVE</b>	<p><b>Call air evacuation charter</b></p> <p><b>Tell them</b></p> <ul style="list-style-type: none"> <li>• Medivac required</li> <li>• Your location –Camp Farewell Lat: 69 12 35.09 Long: 135 06 17.286</li> <li>• Landing (airstrip) condition include lighting, wind speed, wind direction and local weather conditions</li> <li>• Any obstructions or hazards to be aware of in landing</li> <li>• Phone numbers of camp</li> <li>• Radio frequencies of camp</li> <li>• Upon contact to charter, medical contact is mandatory to ensure that proper facilities and attention is given to patient(s).</li> <li>• Number of injured:</li> <li>• Extent of injuries:</li> <li>• What is being done (patient talking, seated, no response, etc):</li> <li>• Obtain confidential medical file to accompany patient</li> </ul> <p><b>Call to Hospital and ambulance</b></p> <p>If available and possible, medic shall call the local hospital and ambulance</p> <p><b>Tell them</b></p> <ul style="list-style-type: none"> <li>• Medivac in progress and that evacuation charter has been notified</li> <li>• Number of injured:</li> <li>• Extent of injuries:</li> <li>• What is being done (patient talking, seated, no response, etc)</li> <li>• Age, sex of patient</li> <li>• Brief description of accident</li> <li>• Description of injuries or illness</li> <li>• Medic position and qualifications</li> <li>• Type of medical aid already administered</li> <li>• Site phone number</li> <li>• Estimated time of arrival:</li> </ul>
<i>EXPECTATIONS</i>	<p>What the paramedic should expect when he arrives on site:</p> <p style="text-align: center;">OR</p> <p>What you can expect when the conveyance vehicle arrives:</p>
<i>COMMUNICATION OF PLAN</i>	<p><b>First Aid staff on site</b></p> <p><b>All workers on site as part of orientation</b></p>



---

## 2.5 Farewell Emergency Response Plans

---

### 2.5.1 Sewage Spill Emergency Response Plan

---

---

**LOCATION: CAMP FAREWELL**

---

#### TRANSPORTATION

There will be transportation of raw sewage from the camp to the treatment plant in Inuvik

#### MAINTENANCE AND CONTROL

This contingency plan is project specific and will be reviewed:

- As changes to applicable environmental legislation come into effect
- To take into account changes in environmental factors and in facility characteristics and policy
- During any on-site training exercises
- After each and every sewage incident or near miss.

Changes to phone numbers and names of those individuals identified in this contingency plan will be made on an as required and when required basis.

#### 1. SAFETY

##### Ensure personal safety

- ◆ Ensure your own personal safety from existing and potential hazards and fellow worker safety.

#### 2. ISOLATE AND DENY ENTRY

##### Isolate the area and deny / restrict entry

- ◆ Utilize vehicles or barricades for temporary control.
- ◆ Establish / adjust control perimeters.

#### 3. NOTIFICATIONS

##### Immediately notify the following

- ◆ Shell's on site supervisor

##### Notify the following as soon as practical

- ◆ Niglintgak construction / logistic manager
- ◆ Northwest Territory Emergency Spill Response Line
- ◆ Regional Operations Center
- ◆ Indian Northern Affairs Canada

- ◆ NEB if spill exceeds permit approvals requirements and/or spill is not contained and could result in further safety property or environmental damage.

#### 4. COMMAND / MANAGEMENT

##### **Order depends on specific factors**

- ◆ Assign Incident Command System roles as resources become available.
- ◆ Initiate response to incident, taking existing conditions into account.
- ◆ Ensure safety precautions and operating plans and conditions are reviewed with the crew.
- ◆ Determine a need for roadblocks.
- ◆ Ensure proper permits are executed.

#### 5. IDENTIFICATION AND HAZARD ASSESSMENT

##### **Identify the Hazards and Assess the Risks**

- ◆ Determine chemical makeup of substance (i.e.: WHMIS, TDG Placards, PIN Nos).
- ◆ MSDS (Material Safety Data Sheets – Chemical).
- ◆ Placards and labels (colours, markings).
- ◆ Shipping papers (Bill of Lading, Way Bill, etc).
- ◆ Technical information (CANUTEC).
- ◆ Other (specialists, monitoring devices).

#### 6. PROTECTIVE EQUIPMENT

##### **Ensure proper personal protective equipment is utilized, and know the level of equipment available**

- ◆ Visibility stripes, safety glasses, goggles, life jackets, gloves etc.

#### 7. CONTAINMENT AND CONTROL

##### **Safe defensive containment**

- ◆ If safe to do so, and if possible, stop the flow of material.
- ◆ If spill frozen shovel snow sewage mixture into containers.
- ◆ Deploy absorbent pads, socks as required.
- ◆ See list of emergency spill cleanup equipment in equipment list
- ◆ Recover sorbents and place in steel drums
- ◆ Notify and request assistance if required from external NWT Emergency Spill Response Line.
- ◆ Consider what resources /materials are available within close proximity; i.e.: crawler tractor, loaders, bobcats, vacuum /water trucks, fuel bladders / fiberglass tanks and COOP Spill units.

#### 8. DECONTAMINATION AND CLEANUP

##### **Collect, cleanup, and sample**

- ◆ Decontaminate personnel as required if exposed to the spill. Wash hands and face after clean up.
- ◆ Priority is to high environmentally sensitive areas (municipality water sources, waterfowl staging areas, domestic fishing areas).
- ◆ Store the spilled material in proper containers for disposal;
- ◆ Implement remediation program for the area as required;
- ◆ Monitor the progress of remediation as required.

**9. DISPOSAL**

**Dispose of wastes, contaminated clothing and equipment if unable to decontaminate.**

- ◆ Incinerate sorbents
- ◆ Warm up containers of snow and sewage mixture to room temperature and then over the time frame of a couple of weeks pour them into the flow equalization tank of the sewage plant. The reason for introducing the snow sewage mixture slowly and at room temperature is to avoid a large shock loading of the plant that will affect the microorganisms or ship containers to Inuvik Sewage Treatment Plant for disposal.

**10. DOCUMENTATION**

**Document all actions and complete reports**

- ◆ Assign a recorder to log activities
- ◆ Complete and submit a follow-up spill report to the Northwest Territories Spill Report line.





, THIS PAGE IS INTENTIONALLY BLANK

---

## 2.5.3 Fuel/Spill Emergency Response Plan (Water)/Coast Guard Oil Pollution Emergency Plan

---

---

**LOCATION: CAMP FAREWELL**

---

### 1. PROTECTIVE EQUIPMENT

---

**LOCATION: CAMP FAREWELL**

---

The campsite is located between a small lake and a channel of the Mackenzie River. All fuel on site is stored in tanks within secondary containment. This ERP also applies to non-fuel spills (motor oil, hydraulic oil, cooking oil etc.). A minor spill to water could develop if a land spill is not contained immediately.

### **TRANSPORTATION**

Liquid fuels will be stored in a closed system during transportation. Diesel fuel will be delivered from Camp Farewell by fuel truck. Aviation fuel will be transported in drums. All equipment coming on site will be diesel powered so amount of gasoline on site is minimal.

### **MAINTENANCE AND CONTROL**

This contingency plan is project specific and will be 1) reviewed & 2) updated:

- As changes to applicable environmental legislation come into effect
- Annually, to take into account changes in environmental factors and in facility characteristics and policy
- After every oil pollution incident and exercise.

Changes to phone numbers and names of those individuals identified in this contingency plan will be made on an as required and when required basis. The numbers are to be verified when the camp is opened and/or on an annual basis.

### **ORGANIZATION**

Shell Canada Limited utilizes the Incident Command System for all emergencies<sup>1</sup>. All incident responses are modeled after the Disciplined Approach. See Section 9.7 of Shell's Emergency Response Plan Model for detailed guidance on the Disciplined Approach and Prioritized Response Goals.

### **PRIORITIZED RESPONSE GOALS**

The prioritized response goals are:

1. Protect Human Life (yours, fellow worker, & public)
2. Protect The Environment
3. Minimize Asset Loss
4. Regain Steady State Operations to minimize business impact (consider both revenue & reputation)

---

<sup>1</sup> ICS system description plus Roles & Responsibilities of all organizational positions are described in Shell's Emergency Response Manual - Model

**DISCIPLINED APPROACH TO THE SPILL****1. SAFETY****Ensure personal safety**

- ◆ Ensure your own personal safety from existing and potential hazards and fellow worker safety.

**2. ISOLATE AND DENY ENTRY****Isolate the area and deny / restrict entry**

- ◆ Utilize vehicles or barricades for temporary control.
- ◆ Establish / adjust control perimeters.

**3. NOTIFICATIONS****Immediately notify the following**

- ◆ Shell's onsite supervisor

**Notify the following as soon as practical**

- ◆ Shell's Niglintgak Construction / logistic manager
- ◆ Northwest Territory Emergency Spill Response Line
- ◆ Indian Northern Affairs Canada
- ◆ Regional Operations Center (ROC)

NEB if spill exceeds volumes outlined in the Environmental Protection Act, Consolidation of Spill Contingency Planning and Reporting Regs, RRNWT 1990,c, schedule Band/or spill is not contained and could result in further safety property or environmental damage and/or what is stated in specific permits (ie CWS)

- ◆ **COMMAND / MANAGEMENT**

**Order depends on specific factors**

- ◆ Assign Incident Command System roles as resources become available.
- ◆ Initiate the response to incident, taking existing conditions into account.
- ◆ Ensure safety precautions and operating plans and conditions are reviewed with the crew.
- ◆ Determine a need for roadblocks.
- ◆ Ensure proper permits are executed.

**4. IDENTIFICATION AND HAZARD ASSESSMENT****Identify the Hazards and Assess the Risks**

- ◆ Determine chemical makeup of substance (i.e.: WHMIS, TDG Placards, PIN Nos.).
- ◆ MSDS (Material Safety Data Sheets – Chemical).
- ◆ Placards and labels (colors, markings).
- ◆ Shipping papers (Bill of Lading, Way Bill, etc).
- ◆ Technical information (CANUTEC).
- ◆ Other (specialists, monitoring devices).

**5. PROTECTIVE EQUIPMENT****Ensure proper personal protective equipment is utilized, and know the level of equipment available**

- ◆ Fire retardant clothing, safety glasses, goggles, life jackets, gloves etc.
- ◆ Check MSDS sheets for additional requirements

## 6. CONTAINMENT AND CONTROL

### Safe defensive containment

- ◆ If safe to do so, and if possible, stop the flow of material.
- ◆ Ensure that flow is contained before starting the recovery procedure.
- ◆ Construct dikes, dams or drainage trenches to limit size of spill and prevent fuel from migrating. Contain as close to source as safe and practical to do
- ◆ In winter, areas are usually snow covered so spill areas are easily seen. Build dikes using plastic sheeting to line face of dike. Use mechanical and hand equipment to scrape up snow/liquid mixture and place it in containers.
- ◆ See list of emergency spill cleanup equipment for clean up materials
- ◆ Isolate (deny entry via keeping safe distance from spilled material.
- ◆ Divert, disperse, dilute cover
- ◆ Pump as much liquid product as possible into empty drums or tanks for disposal.
- ◆ Deploy absorbent pads, socks as required.
- ◆ Recover oiled absorbents and place them in steel drums for proper disposal. Absorbents should be incinerated as soon as possible to avoid spontaneous combustion.
- ◆ Immediate burning may be required to prevent the spread of fuel into water courses. If burning done, pick up the residue after-burn.
- ◆ Notify and request assistance, if required, from external NWT Emergency Response Line.
- ◆ Place all resources/materials on standby that are available within close proximity, i.e. crawler tractor, loaders, bobcats, vacuum trucks, fuel bladders/fiberglass tanks, lost circulation material, straw bales, COOP spill unit etc.

## 7. DECONTAMINATION AND CLEANUP

### Collect, cleanup, and sample

- ◆ Decontaminate personnel as required if exposed to the spill
- ◆ Priority is to high environmentally sensitive areas (municipality water sources, waterfowl staging areas, domestic fishing areas).
- ◆ Store the spilled material in proper containers for disposal;
- ◆ Implement remediation program for the area, as required
- ◆ Collect and analyze soil samples from the remaining spill area, if required
- ◆ Monitor the progress of remediation as required.

## 8. DISPOSAL

### Dispose of wastes, contaminated clothing and equipment if unable to decontaminate.

- ◆ Consider waste impacts in all decisions
- ◆ Remove the contaminated material and haul to an approved disposal site.

## 9. DOCUMENTATION

### Document all actions and complete reports

- ◆ Assign a recorder to log activities



---

## 2.5.5 Fire Procedure Emergency Response Plan

---

Muster area: BIG SHOP Southwest side of yard

All personnel

- Sound the fire alarm
- Assess the fire: if it is small enough, extinguish with fire extinguisher
- Shut door(s) and window(s) in the room you are evacuating
- If smoke builds up, stay low to the ground
- Remain calm, do not run
- Notify the incident commander immediately
- Remove your vehicle to the perimeter of the campsite
- Evacuate to and remain at the muster area until instructed to do otherwise by incident commander

Medic

- Evacuate to the muster area
- Take a radio for communication
- Treat any burns or related injuries
- If required, transport patients to hospital via ECV or helicopter, depending on nature of injury

Incident Commander

- Take a radio and satellite phone for communication. Ensure that fire alarm has been sounded throughout the camp
- Quickly go to the fire scene to assume command
- Meet with the emergency Support Team to assess action already taken and further action required

Emergency response team shall consist of

- Dave Berry, Don Lulis and /or trained alternates
- Ensure that each member has a radio for communication
- As first line of defense, shut the breakers to the trailer(s) off.
- Check each room to ensure that all camp personnel have vacated the trailers.
- Report to the incident commander for a head count and debriefing.
- Protect yourself and fellow workers
- If it is safe to do so, extinguish the fire. Only use the water supply (i.e. water truck, fire hose etc.) when informed that the generator is shut off.
- Take a head count of camp personnel.
- If required and safe to do so, locate missing personnel.



---

## 2.6 Roles of Regulatory Government Agencies

---

### 2.6.1 Role of Environment Canada

---

Environment Canada's Role in Environmental Emergencies includes the following:

- ◆ Maintenance of a national spill reporting and alerting system;
- ◆ On-scene response to spills of federal concern;
- ◆ Leadership for inland boundary spills;
- ◆ Leadership and guidance in development and exercise of contingency plans;
- ◆ Encouragement of sound spill prevention practices;
- ◆ Research to develop, test and demonstrate new emergency equipment;
- ◆ Advice on weather, ice, sea-state and air quality, including enhanced meteorological support during emergencies;
- ◆ Preparation and distribution of weather warnings;
- ◆ Modeling the movements of pollutants;
- ◆ Wildlife advice and monitoring;
- ◆ Emergency training programs for EC and others;
- ◆ Enforcement of legislation within mandate;
- ◆ Assessment of environmental damages;
- ◆ Provision of leadership, training and education to industry and other government and non-government players on Shoreline Cleanup Assessment Team (SCAT) process including wildlife protection;
- ◆ Documentation on natural resource damages.

---

### 2.6.2 Role of Regional Environmental Emergencies Team (REET)

---

REET's Role in the Event of a Major Oil Spill:

- ◆ Provision of environmental advice;
- ◆ Identification of environmentally sensitive areas;
- ◆ Spill behavior, fate and effects;
- ◆ Use and acceptability of dispersants;
- ◆ In-situ burning and other innovative technologies;
- ◆ Wildlife protection and rehabilitation strategies;
- ◆ Oily waste and disposal;



- ◆ Provision of assistance during spill response operations and planning;
  - ◆ Environmental impact monitoring and evaluation of cleanup effectiveness;
  - ◆ Oil spill sampling and monitoring of environmental aspects of cleanup operations;
  - ◆ Up-to-date information on environmentally sensitive resources and sensitivity maps;
  - ◆ Spill surveillance;
  - ◆ Spill trajectory modeling; and
  - ◆ Atmospheric and hydrologic data and weather forecasts.
- 

### **2.6.3 Role of Response Operations Center (ROC)**

---

Role of the ROC is:

- ◆ 24/7 reporting centre
  - ◆ Assess what Canadian Coast Guard involvement will be
- 

### **2.6.4 Role of the Canadian Coast Guard (CCG)**

---

Role of the Canadian Coast Guard:

- ◆ To monitor response that the polluter is taking (usually done by phone)
- ◆ If incident escalates to point where polluter is unable to respond properly, CCG will take over role of On Scene Commander
- ◆ Canadian Coast Guard takes on role of Lead Agency of all ship to shore incidents.

## 2.7 Definitions

---

### 2.7.1 Environmentally Sensitive Areas

---

**Environmentally sensitive areas are defined as:**

Areas containing natural, cultural or man made features which may be threatened during an oil spill. These features may represent socio-economic value (either through resource extraction or non-consumptive use of the resources) and/or life support value (e.g. productive habitat).

Examples of sensitive areas include:

- ◆ Threatened, vulnerable or endangered species or their habitat;
- ◆ Areas of concentration of species
- ◆ Areas of cultural significance (e.g. archaeological sites);
- ◆ Areas of socio-economic significance (e.g. marinas, recreation sites, water intakes); and,
- ◆ Shoreline habitats sensitive to oil (e.g. marshes)



## 2.8 Available Equipment List

### Inventory - Oilspill Container Number 1 (MDSRC)

Quantity	U of M	Description	Category
4	pairs	Baffin Winter Boots (Sz 10 - 2, Sz 11 - 2)	Clothing
1	set	Chainsaw Chaps	Clothing
25	pairs	Disposable Coveralls	Clothing
5	pairs	Insulated Coveralls - XL	Clothing
20	pairs	Winter Monkey Grip Gloves	Clothing
6	sacks	Floor Dry	Consumable
9	sacks	Saw Dust	Consumable
9	bags	Absorbent - Loose	Consumable
20	bundles	Absorbent Pads	Consumable
11	boxes	Absorbent Socks	Consumable
2	each	24' x 48' Tarps	Containment
6	each	Aluminum Scoop Shovels	Containment
2	each	Brooms	Containment
12	each	Empty 45 Gallon Drums	Containment
2	each	Ice Scrapers	Containment
2	each	Long Handle Square Mouth Shovels	Containment
2	each	Pitch Forks	Containment
2	each	Rakes	Containment
2	each	Snow Shovels	Containment
1	each	6lb Clay Pick w/Handle	Containment
4	each	1" x 15' Tiedown Straps	Miscellaneous
2	each	2" x 15' Tiedown Straps	Miscellaneous
2	each	5 Ft Pry Bars	Miscellaneous
3	each	Bungy Cords	Miscellaneous
2	each	Clipboards	Miscellaneous
1	each	Disposable Camera	Miscellaneous
2	each	Funnels	Miscellaneous
2	each	Greenlee Tool Box	Miscellaneous
2	each	Padlocks	Miscellaneous
2	each	Pencils	Miscellaneous
3	each	Utility Brush - 20 inch	Miscellaneous
3	each	Plastic Pail 5 Gallon c/w Lid	Miscellaneous
1	each	5 Gallon Jug Simple Green Crystal	Miscellaneous
6	cans	Orange Spray Paint	Miscellaneous
6	rolls	Duct Tape	Miscellaneous
1	case	Garbage Bags	Miscellaneous
2	each	100 Ft Extension Cords - 15amp	Power
5	litres	2 Cycle Oil	Power
1	each	2 Gallon Jerry Can Oil/Gas Mix	Power
1	each	5 Gallon Jerry Can Diesel Fuel	Power
2	each	5 Gallon Jerry Can Gasoline	Power

## EMERGENCY RESPONSE PLAN

REVISED: Jan 2005

2	each	50 Ft Extension Cords - 15amp	Power
2	each	50 Ft Extension Cords - 30amp	Power
1	each	Chain Saw - Makita DCS400	Power
12	litres	Engine Oil - Synthetic	Power
1	each	Generator - Kodiak - SGB5500HX	Power
6	each	Halogen Bulbs - Spare for Work Lights	Power
2	each	Halogen Lights with Stands	Power
4	each	Halogen Work Lights	Power
1	each	Herman Nelson	Power
12	each	6 Volt Batteries	Safety
6	each	Blankets	Safety
2	each	Fire Axes	Safety
2	each	Fire Extinguishers - 20lb ABC	Safety
1	each	First Aid Kit - 10 Man #3	Safety
8	each	Flashlights	Safety
10	each	Highway Cones	Safety
5	each	Highway Vests	Safety
5	each	Roadside Flares	Safety
1	each	Signal Horn	Safety
1	each	Signal Horn - Refill	Safety
2	rolls	Safety Fence 4' x 50'	Safety
1	each	Loudhailer	Safety
3	rolls	Tape "CAUTION - DO NOT ENTER"	Safety
3	rolls	Tape "DANGER"	Safety
1	each	Measuring Tape 1/2" x 100ft	Tools
1	each	100ft Chalk Line	Tools
3	each	8oz Powder Chalk for Chalk Line	Tools
1	each	10lb Sledge Hammer w/36" Handle	Tools
1	each	Tool Box	Tools
1	each	50' Tape Measure	Tools
1	set	Allen Key Set	Tools
1	each	Chainsaw File	Tools
1	each	Crescent Wrench - 10"	Tools
1	each	Crescent Wrench - 12"	Tools
1	roll	Duct Tape	Tools
1	roll	Electrical Tape	Tools
1	each	Flat File	Tools
1	each	Hacksaw	Tools
4	each	Hacksaw Blades	Tools
1	each	Hammer - Ball Peen 24 oz	Tools
1	each	Hammer - Claw 20 oz	Tools
1	roll	Mechanics Wire	Tools
1	each	Pipe Wrench - 18"	Tools
1	each	Pipe Wrench - 24"	Tools
1	each	Pipe Wrench - 36"	Tools
1	each	Pliers - Needle Nose	Tools
1	each	Pliers - Regular	Tools
1	each	Screwdriver - Large Flat Blade	Tools
1	each	Screwdriver - Multi Tip	Tools
1	set	Socket Set - 20 piece	Tools
1	each	Tin Snips - 3 piece	Tools

1	each	Utility Knife	Tools
---	------	---------------	-------

**Inventory - Oilspill Container Number 2 (MDSRC)**

<b>Quantity</b>	<b>U of M</b>	<b>Description</b>	<b>Category</b>
4	pairs	Baffin Winter Boots (Sz 10 - 2, Sz 11 - 2)	Clothing
1	set	Chainsaw Chaps	Clothing
25	pairs	Disposable Coveralls	Clothing
5	pairs	Insulated Coveralls - XL	Clothing
20	pairs	Winter Monkey Grip Gloves	Clothing
15	sacks	Floor Dry	Consumable
10	sacks	Saw Dust	Consumable
20	bundles	Absorbent Pads	Consumable
4	boxes	Absorbent Socks	Consumable
2	each	24' x 48' Tarps	Containment
6	each	Aluminum Scoop Shovels	Containment
2	each	Brooms	Containment
12	each	Empty 45 Gallon Drums	Containment
2	each	Ice Scrapers	Containment
2	each	Long Handle Square Mouth Shovels	Containment
2	each	Pitch Forks	Containment
3	each	Rakes	Containment
2	each	Snow Shovels	Containment
1	each	6lb Clay Pick w/Handle	Containment
3	each	1" x 15' Tiedown Straps	Miscellaneous
2	each	2" x 15' Tiedown Straps	Miscellaneous
2	each	5 Ft Pry Bars	Miscellaneous
10	each	Bungy Cords	Miscellaneous
2	each	Clipboards	Miscellaneous
1	each	Disposable Camera	Miscellaneous
2	each	Funnels	Miscellaneous
1	each	Greenlee Tool Box	Miscellaneous
2	each	Pencils	Miscellaneous
3	each	Utility Brush - 20 inch	Miscellaneous
3	each	Plastic Pail 5 Gallon c/w Lid	Miscellaneous
1	each	5 Gallon Jug Simple Green Crystal	Miscellaneous
6	cans	Orange Spray Paint	Miscellaneous
6	rolls	Duct Tape	Miscellaneous
1	case	Garbage Bags	Miscellaneous
2	each	100 Ft Extension Cords - 15amp	Power
2	litres	2 Cycle Oil	Power
1	each	2 Gallon Jerry Can Oil/Gas Mix	Power
1	each	5 Gallon Jerry Can Diesel Fuel	Power
1	each	5 Gallon Jerry Can Gasoline	Power
3	each	50 Ft Extension Cords - 15amp	Power
2	each	50 Ft Extension Cords - 30amp	Power
1	each	Chain Saw - Makita DCS 400	Power
1	gallons	Engine Oil 0-30	Power
1	each	Generator - Kodiak - SGB5500HX	Power
6	each	Halogen Bulbs - Spare for Work Lights	Power

2	each	Halogen Lights with Stands	Power
4	each	Halogen Work Lights	Power
1	each	Herman Nelson	Power
12	each	6 Volt Batteries	Safety
5	each	Blankets	Safety
2	each	Fire Axes	Safety
2	each	Fire Extinguishers - 20lb ABC	Safety
1	each	First Aid Kit - 10 Man #3	Safety
8	each	Flashlights	Safety
10	each	Highway Cones	Safety
5	each	Highway Vests	Safety
2	each	Roadside Emergency Kits	Safety
1	each	Signal Horn	Safety
1	each	Signal Horn - Refill	Safety
2	rolls	Safety Fence 4' x 50'	Safety
1	each	Loudhailer	Safety
3	rolls	Tape "CAUTION - DO NOT ENTER"	Safety
3	rolls	Tape "DANGER"	Safety
1	each	Measuring Tape 1/2" x 100ft	Tools
1	each	100ft Chalk Line	Tools
3	each	8oz Powder Chalk for Chalk Line	Tools
1	each	10lb Sledge Hammer w/36" Handle	Tools
1	each	Tool Box	Tools
1	set	Allen Wrench Set - 25 piece	Tools
1	each	Chainsaw File	Tools
1	each	Crescent Wrench - 10"	Tools
1	each	Crescent Wrench - 8"	Tools
1	roll	Duct Tape	Tools
1	roll	Electrical Tape	Tools
1	each	Flat File	Tools
1	each	Hacksaw	Tools
10	each	Hacksaw Blades	Tools
1	each	Hammer - Ball Peen 24 oz	Tools
1	each	Hammer - Claw 20 oz	Tools
1	roll	Mechanics Wire	Tools
1	each	Pipe Wrench - 12"	Tools
1	each	Pipe Wrench - 18"	Tools
1	each	Pipe Wrench - 24"	Tools
1	each	Pliers - Needle Nose	Tools
1	each	Pliers - Regular	Tools
1	each	Screwdriver - Large Flat Blade	Tools
1	each	Screwdriver - Multi Tip	Tools
1	set	Socket Set - 20 piece	Tools
1	each	Tin Snips - 3 piece	Tools
1	each	Utility Knife	Tools
1	each	Wire Cutter	Tools

**Inventory - Winter Kit Number 8 (MDSRC)**

<u>Quantity</u>	<u>U of</u> <u>M</u>	<u>Description</u>
		Chemguard Terra Tank, 1500 Imp Gallons, 2" Fill/Drain, 2"
1	ea	Vent
1	ea	Repair Kit for Chemguard Terra Tank
1	ea	Stream Speed Meter
2	ea	Stihl 92cc Chainsaw Model 066 c/w 36" Bar and Chain
1	ea	Stihl 31cc Ice Auger w/10" Bit and 2ft Extension
1	ea	Tool Box w/Chainsaw and Auger Spares
4	ea	Body Harness - Parachute Type
4	ea	6ft Shock Absorber Lines w/Hook for Body Harness
2	ea	Chainsaw Rig
1	Box	Cloth Wipes
1	ea	12L Galvanized Pail
1	ea	Fiberglass Step Ladder, 6 ft
1	ea	Sash Cord, 1/8" x 250 ft
1	ea	Sash Cord, 1/4" x 250 ft
2	ea	Signs
1	box	Chainsaw Chains



**Inventory - Oilspill Container Number 3 (PetroCanada)**

Quantity	U of M	Description	Category
4	pairs	Baffin Winter Boots (Sz 10 - 2, Sz 11 - 2)	Clothing
1	set	Chainsaw Chaps	Clothing
4	pairs	Insulated Coveralls - XL	Clothing
20	pairs	Winter Monkey Grip Gloves	Clothing
15	sacks	Floor Dry	Consumable
10	sacks	Saw Dust	Consumable
20	bundles	Absorbent Pads	Consumable
4	boxes	Absorbent Socks	Consumable
2	each	24' x 48' Tarps	Containment
6	each	Aluminum Scoop Shovels	Containment
2	each	Brooms	Containment
12	each	Empty 45 Gallon Drums	Containment
2	each	Ice Scrapers	Containment
2	each	Long Handle Square Mouth Shovels	Containment
2	each	Pitch Forks	Containment
3	each	Rakes	Containment
2	each	Snow Shovels	Containment
4	each	1" x 15' Tiedown Straps	Miscellaneous
2	each	2" x 15' Tiedown Straps	Miscellaneous
2	each	5 Ft Pry Bars	Miscellaneous
2	each	Bungy Cords	Miscellaneous
2	each	Clipboards	Miscellaneous
1	each	Disposable Camera	Miscellaneous
2	each	Funnels	Miscellaneous
1	each	Greenlee Tool Box	Miscellaneous
2	each	Pencils	Miscellaneous
2	each	100 Ft Extension Cords - 15amp	Power
4	litres	2 Cycle Oil	Power
1	each	2 Gallon Jerry Can Oil/Gas Mix	Power
1	each	5 Gallon Jerry Can Diesel Fuel	Power
1	each	5 Gallon Jerry Can Gasoline	Power
3	each	50 Ft Extension Cords - 15amp	Power
2	each	50 Ft Extension Cords - 30amp	Power
1	each	Chain Saw - Makita DCS400	Power
1	gallons	Engine Oil 0-30	Power
1	each	Generator - Kodiak - SGB5500HXS	Power
6	each	Halogen Bulbs - Spare for Work Lights	Power
2	each	Halogen Lights with Stands	Power
4	each	Halogen Work Lights	Power
1	each	Herman Nelson	Power
12	each	6 Volt Batteries	Safety
5	each	Blankets	Safety
2	each	Fire Axes	Safety
2	each	Fire Extinguishers - 20lb ABC	Safety
1	each	First Aid Kit - 10 Man #3	Safety
8	each	Flashlights	Safety
10	each	Highway Cones	Safety

5	each	Highway Vests	Safety
2	each	Roadside Emergency Kits	Safety
1	set	Allen Wrench Set - 25 piece	Tools
1	each	Chainsaw File	Tools
1	each	Crescent Wrench - 12"	Tools
1	each	Crescent Wrench - 24"	Tools
1	each	Crescent Wrench - 8"	Tools
1	roll	Duct Tape	Tools
1	roll	Electrical Tape	Tools
1	each	Flat File	Tools
1	each	Hacksaw	Tools
10	each	Hacksaw Blades	Tools
1	each	Hammer - Ball Peen 24 oz	Tools
1	each	Hammer - Claw 20 oz	Tools
1	roll	Mechanics Wire	Tools
1	each	Pipe Wrench - 12"	Tools
1	each	Pipe Wrench - 18"	Tools
1	each	Pliers - Needle Nose	Tools
1	each	Pliers - Regular	Tools
1	each	Screwdriver - Large Flat Blade	Tools
1	each	Screwdriver - Multi Tip	Tools
1	set	Socket Set - 20 piece	Tools
1	each	Tin Snips - 3 piece	Tools
1	each	Utility Knife	Tools
1	each	Wire Cutter	Tools

**Inventory - Oilspill Container Number 4 (PetroCanada)**

Quantity	U of M	Description	Category
4	pairs	Baffin Winter Boots (Sz 9 - 1, Sz 10 - 2, Sz 11 - 1)	Clothing
12	Pairs	Disposable Coveralls	Clothing
5	pairs	Insulated Coveralls - XL	Clothing
20	pairs	Winter Monkey Grip Gloves	Clothing
15	sacks	Floor Dry	Consumable
10	sacks	Saw Dust	Consumable
6	Rolls	Absorbent	Consumable
17.5	bundles	Absorbent Pads	Consumable
4	boxes	Absorbent Socks	Consumable
2	each	24' x 48' Tarps	Containment
4	each	Aluminum Scoop Shovels	Containment
2	each	Brooms	Containment
10	each	Empty 45 Gallon Drums	Containment
2	each	Ice Scrapers	Containment
1	each	Long Handle Square Mouth Shovels	Containment
2	each	Pitch Forks	Containment
3	each	Rakes	Containment
2	each	Snow Shovels	Containment
2	each	1" x 15' Tiedown Straps	Miscellaneous
2	each	2" x 15' Tiedown Straps	Miscellaneous
2	each	5 Ft Pry Bars	Miscellaneous
4	each	Bungy Cords	Miscellaneous
2	each	Clipboards	Miscellaneous
1	each	Disposable Camera	Miscellaneous
2	each	Funnels	Miscellaneous
1	each	Greenlee Tool Box	Miscellaneous
2	each	Pencils	Miscellaneous
2	each	100 Ft Extension Cords - 15amp	Power
2	each	50 Ft Extension Cords - 15amp	Power
6	each	Halogen Bulbs - Spare for Work Lights	Power
2	each	Halogen Lights with Stands	Power
4	each	Halogen Work Lights	Power
12	each	6 Volt Batteries	Safety
2	each	Fire Axes	Safety
2	each	Fire Extinguishers - 20lb ABC	Safety
1	each	First Aid Kit - 10 Man #3	Safety
8	each	Flashlights	Safety
10	each	Highway Cones	Safety
5	each	Highway Vests	Safety
2	each	Roadside Emergency Kits	Safety
1	set	Allen Wrench Set - 25 piece	Tools
1	each	Crescent Wrench - 12"	Tools
1	each	Crescent Wrench - 8"	Tools
1	roll	Duct Tape	Tools
1	roll	Electrical Tape	Tools
1	each	Flat File	Tools

1	each	Chainsaw File	Tools
1	each	Hacksaw	Tools
10	each	Hacksaw Blades	Tools
1	each	Hammer - Ball Peen 24 oz	Tools
1	each	Hammer - Claw 20 oz	Tools
1	roll	Mechanics Wire	Tools
1	each	Pipe Wrench - 12"	Tools
1	each	Pipe Wrench - 18"	Tools
1	each	Pipe Wrench - 24"	Tools
1	each	Pliers - Needle Nose	Tools
1	each	Pliers - Regular	Tools
1	each	Screwdriver - Large Flat Blade	Tools
1	each	Screwdriver - Multi Tip	Tools
1	set	Socket Set - 20 piece	Tools
1	each	Tin Snips - 3 piece	Tools
1	each	Utility Knife	Tools
1	each	Wire Cutter	Tools

**Inventory - Oilspill Container Number 5 (PetroCanada)**

<b>Quantity</b>	<b>U of M</b>	<b>Description</b>	<b>Category</b>
4	pairs	Baffin Winter Boots (Sz 10 - 2, Sz 11 - 2)	Clothing
12	Pairs	Disposable Coveralls	Clothing
5	pairs	Insulated Coveralls - XL	Clothing
20	pairs	Winter Monkey Grip Gloves	Clothing
15	sacks	Floor Dry	Consumable
10	sacks	Saw Dust	Consumable
4	rolls	Absorbent	Consumable
20	bundles	Absorbent Pads	Consumable
4	boxes	Absorbent Socks	Consumable
2	each	24' x 30' Tarps	Containment
6	each	Aluminum Scoop Shovels	Containment
2	each	Brooms	Containment
12	each	Empty 45 Gallon Drums	Containment
2	each	Ice Scrapers	Containment
2	each	Long Handle Square Mouth Shovels	Containment
2	each	Pitch Forks	Containment
3	each	Rakes	Containment
2	each	Snow Shovels	Containment
3	each	1" x 15' Tiedown Straps	Miscellaneous
2	each	2" x 15' Tiedown Straps	Miscellaneous
2	each	5 Ft Pry Bars	Miscellaneous
2	each	Bungy Cords	Miscellaneous
2	each	Clipboards	Miscellaneous
1	each	Disposable Camera	Miscellaneous
2	each	Funnels	Miscellaneous
1	each	Greenlee Tool Box	Miscellaneous
2	each	Pencils	Miscellaneous
2	each	100 Ft Extension Cords - 15amp	Power
2	each	50 Ft Extension Cords - 15amp	Power
6	each	Halogen Bulbs - Spare for Work Lights	Power
2	each	Halogen Lights with Stands	Power
4	each	Halogen Work Lights	Power
12	each	6 Volt Batteries	Safety
2	each	Fire Axes	Safety
2	each	Fire Extinguishers - 20lb ABC	Safety
1	each	First Aid Kit - 10 Man #3	Safety
8	each	Flashlights	Safety
10	each	Highway Cones	Safety
5	each	Highway Vests	Safety
2	each	Roadside Emergency Kits	Safety
1	set	Allen Wrench Set - 25 piece	Tools
1	each	Chainsaw File	Tools
1	each	Crescent Wrench - 12"	Tools
1	each	Crescent Wrench - 8"	Tools
1	roll	Duct Tape	Tools
1	roll	Electrical Tape	Tools
1	each	Flat File	Tools

1	each	Hacksaw	Tools
10	each	Hacksaw Blades	Tools
1	each	Hammer - Ball Peen 24 oz	Tools
1	each	Hammer - Claw 20 oz	Tools
1	roll	Mechanics Wire	Tools
1	each	Pipe Wrench - 12"	Tools
1	each	Pipe Wrench - 18"	Tools
1	each	Pipe Wrench - 24"	Tools
1	each	Pliers - Needle Nose	Tools
1	each	Pliers - Regular	Tools
1	each	Screwdriver - Large Flat Blade	Tools
1	each	Screwdriver - Multi Tip	Tools
1	set	Socket Set - 20 piece	Tools
1	each	Tin Snips - 3 piece	Tools
1	each	Utility Knife	Tools
1	each	Wire Cutter	Tools



**OILSPILL Equipment Inventory - Petro-Canada Swimming Point**

Description	Qty	Loc'n
20ft Aqua-Dek Jet Boat w / twin 175 HP Merc Jets	1	Coverall
Anchor Assemblies (70# Danforth Anchor, 10' chain, 50' 3/4" nylon line, line/marker buoy)	3	Boom Boxes
Riverboom - 6" x 6" x 1000ft	1000ft	Boom Boxes
Towing bridles (5/16" galv cable, legs are 36" long)	4	Boom Boxes
MultiSkimmer Model 1230DI (Di for Disc)	1	Container # 9
Shallow water boom vane w/ 150m custom control line	1	Container # 9
Tow paravane (welded alum 9" diameter x 24" long float tapered @ one end 21" overall height)	1	Container # 9
Yanmar 10 hp Diesel Power Pack and Hydratech S2T2 discharge pump w/ suction discharge hoses	1	Container # 9
ShoreSaver Boom, 50ft, 22oz PVC	100ft	Container # 9
ShoreSaver Boom Adapter Set includes water and air adapter fitting, hose and camlock	2	Container # 9
ShoreSaver Inflation Blower	1	Container # 9
ShoreSaver Water Pump - 2" Honda	1	Container # 9
ShoreSaver Hoses w/Camlocks	1	Container # 9
Marker Buoys, 36" dia	4	Container # 9
Mooring Bouys, 18.5" dia	8	Container # 9
Boom Connector Pins	24	Container # 9
Boom Towing Bridles	6	Container # 9
Carabiners, Stainless Steel	24	Container # 9
Danforth Anchors, 25lb	6	Container # 9
Chain for 25lb Anchors	6	Container # 9
Danforth Anchors, 43lb	2	Container # 9
Chain for 43lb Anchors	2	Container # 9
Shackles, 1/4"	25	Container # 9
Shackles, 3/8"	25	Container # 9
Shackles, 1/2"	25	Container # 9
Disposal Bags, 20 bags per roll	6	Container # 9
Anchor Pins, Straight	12	Container # 9
Anchor Pins, Delta Wing	12	Container # 9
MuliSkimmer Drum Insert in Wooden Box	1	Container # 9
Aluminum Rope Reels	3	Container # 9
Rope, Floating 1/2" x 100ft	4	Container # 9
Rope, Floating 1/2" x 50ft	6	Container # 9
Rope, Floating 1/2" x 25ft	6	Container # 9
ChemGuard Terra Tank, 1500 Imp Gallons, 2" Fill/Drain and 2" Vent	1	Container # 9
2" Trash Pump, Honda WT20XR	2	Container # 6
Discharge Hose, 2" x 25 ft	8	Container # 6
Discharge Hose, 2" x 50 ft	6	Container # 6
Suction Hose, 2" x 20 ft	6	Container # 6
Hose Screen, 2"	3	Container # 6
Hose Foot Valve, 2"	3	Container # 6
Hose Caps, 2"	18	Container # 6
Swedge, 2" x 3"	2	Container # 6
Swedge, 2" x 4"	2	Container # 6
Camlock Seals, 2"	8	Container # 6
Fire Nozzle c/w 1-1/2" x 2" Swedge	2	Container # 6

Ball Valves, 2" c/w Camlocks	4	Container # 6
------------------------------	---	---------------



