



CLIENT

Indian & Northern Affairs  
Canada

Remediation Action Plan  
Johnson Point, NWT

Location Plan

EBA Engineering  
Consultants Ltd.



PROJECT NO./FILE NO.  
1740200  
1740200C01c.cdr

OFFICE  
EBA-EDM

DWN CLS	CKD HZ	REV 1
DATE January 19, 2007		

Figure 1



CLIENT


 Indian and Northern Affairs Canada    Affaires indiennes et du Nord Canada

**Canada**

EBA Engineering  
Consultants Ltd.



**Remediation Action Plan  
Johnson Point, NWT**

**Soil Sampling Control Locations**

PROJECT NO./FILE NO.  
1740200  
1740200C02b.cdr

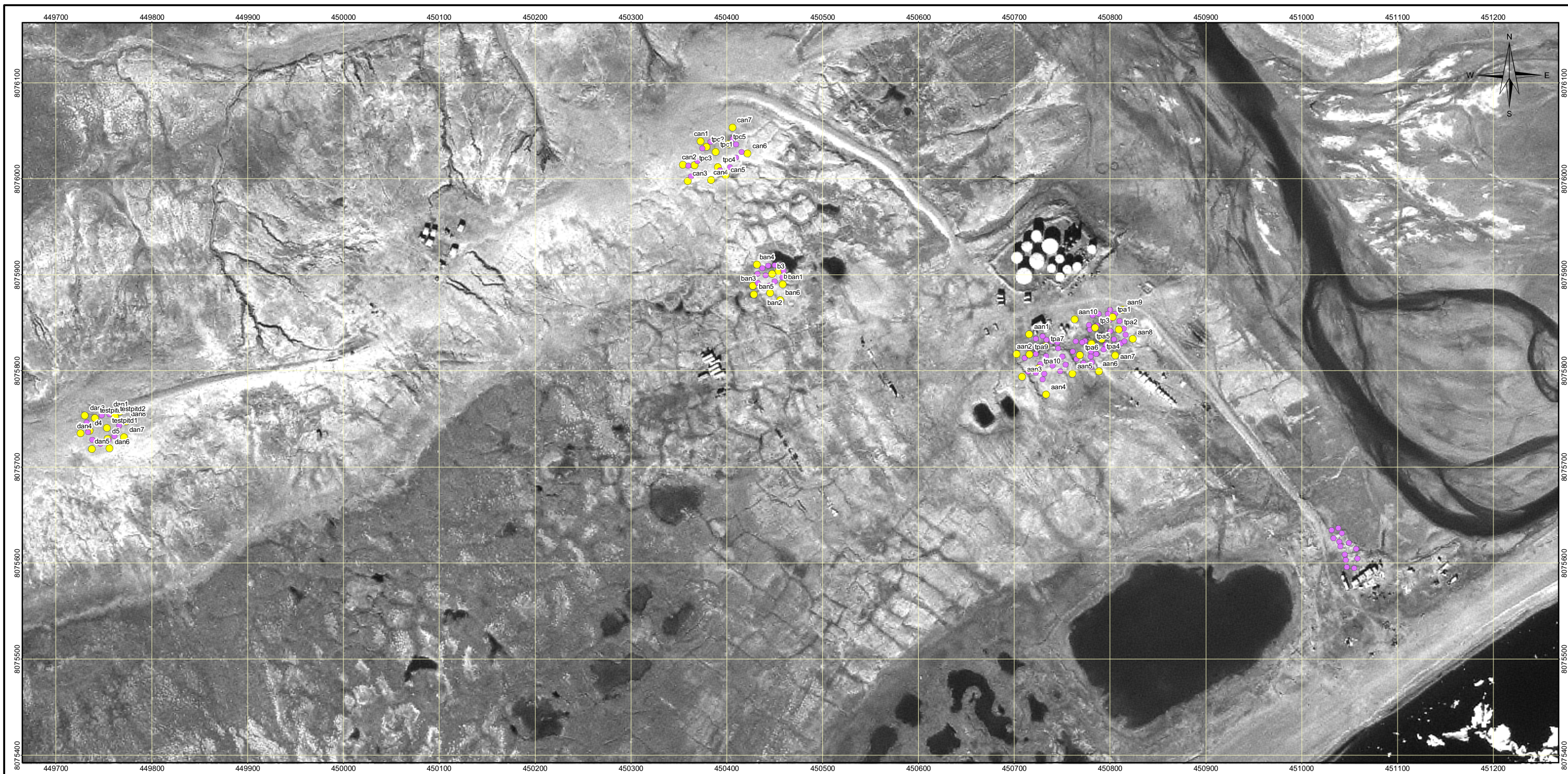
DWN	CKD	REV
CLS	HZ	1

OFFICE  
EBA-EDM

DATE  
January 19, 2007

**Figure 2**





**LEGEND**

- Anomaly Area Extents
- Anomaly Area Samples

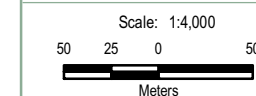
**NOTES**

Base data source: INAC

**REMEDIATION ACTION PLAN,  
JOHNSON POINT, NWT**

**Anomalies Map**

PROJECTION	DATUM
Universal Transverse Mercator	NAD83



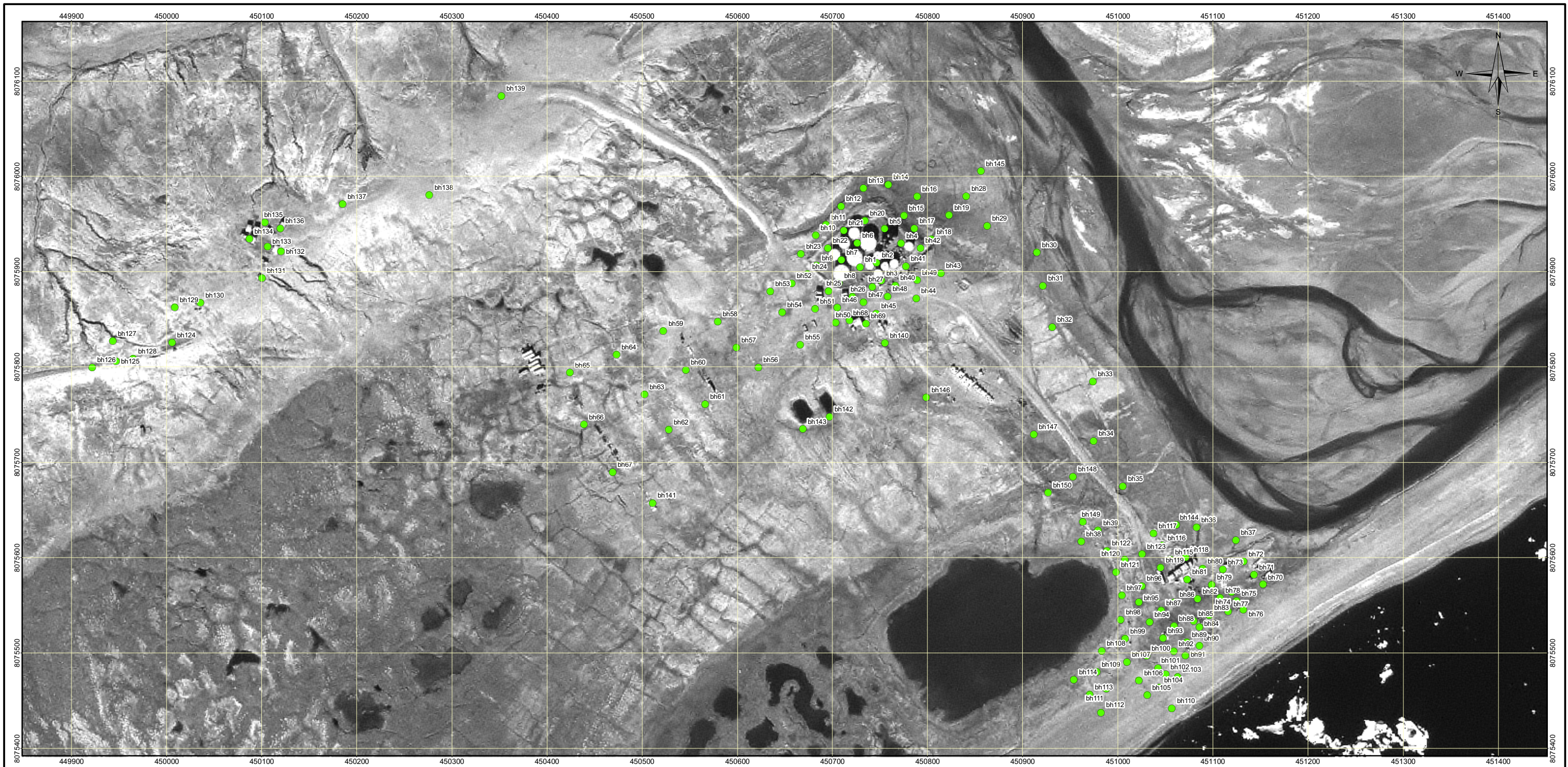
FILE NO.	Figure_Anomalies		
PROJECT NO.	DWN	CKD	REV
1740200	JLB	DD	1
OFFICE	DATE		
EBA-RIV	May 10, 2007		



**Figure 3**

M:\Projects\07011740200M\Map\Figure - Anomalies.mxd





**LEGEND**

- Borehole Location

**NOTES**

Base data source: INAC

**REMEDIATION ACTION PLAN,  
JOHNSON POINT, NWT**

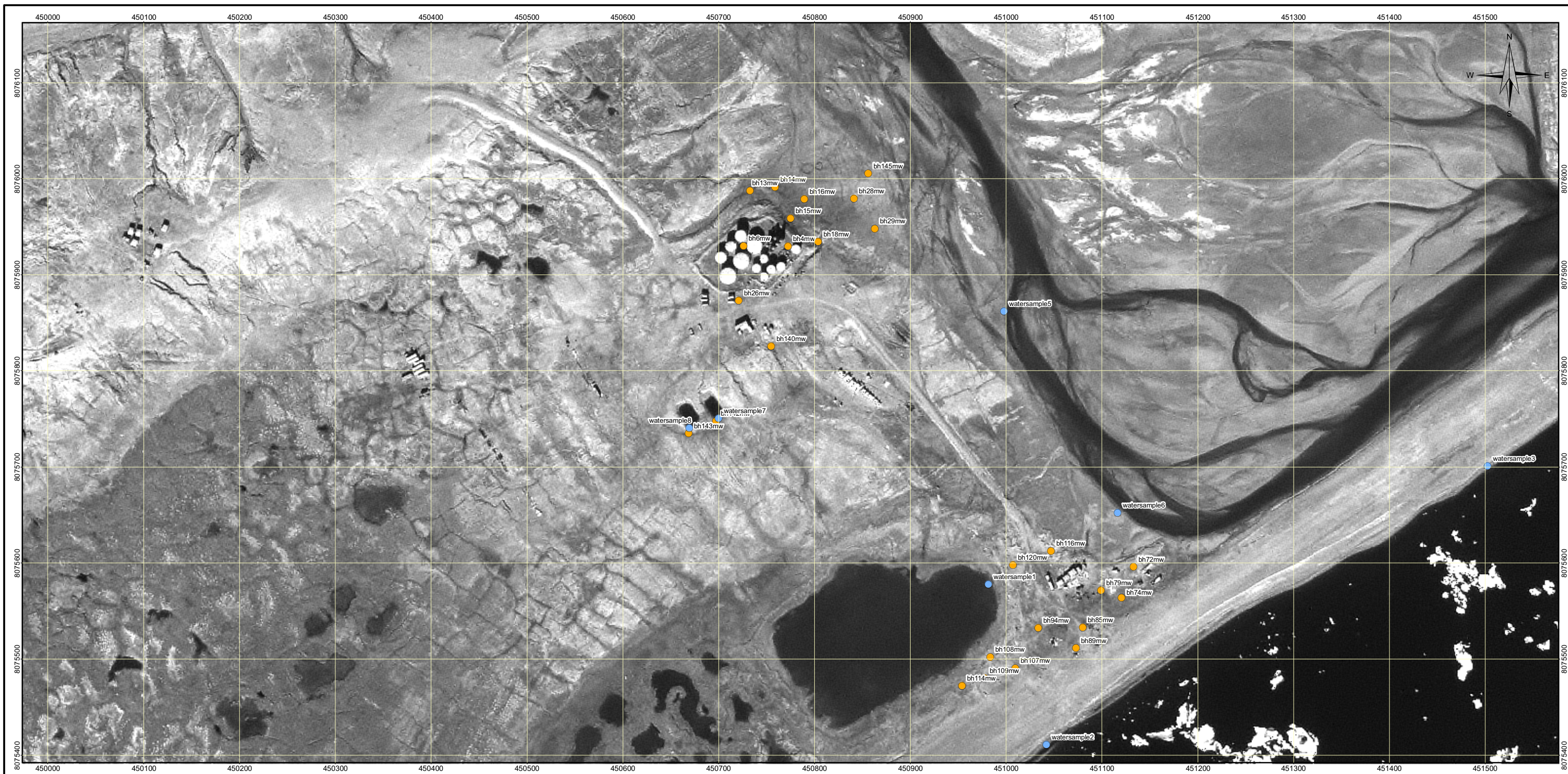
**Boreholes Map**

PROJECTION Universal Transverse Mercator		DATUM NAD83	
Scale: 1:4,000			
50	25	0	50
Meters			
FILE NO. Figure_Boreholes			
PROJECT NO. 1740200	DWN JLB	CKD DD	REV 1
OFFICE EBA-RIV	DATE May 10, 2007		



**Figure 4**





**LEGEND**

- Water/Sediment Sampling Location
- Monitoring Well

**NOTES**

Base data source: INAC

**REMEDIATION ACTION PLAN,  
JOHNSON POINT, NWT**  
**Monitoring Wells and  
Surface Water/Sediment  
Sampling Map**

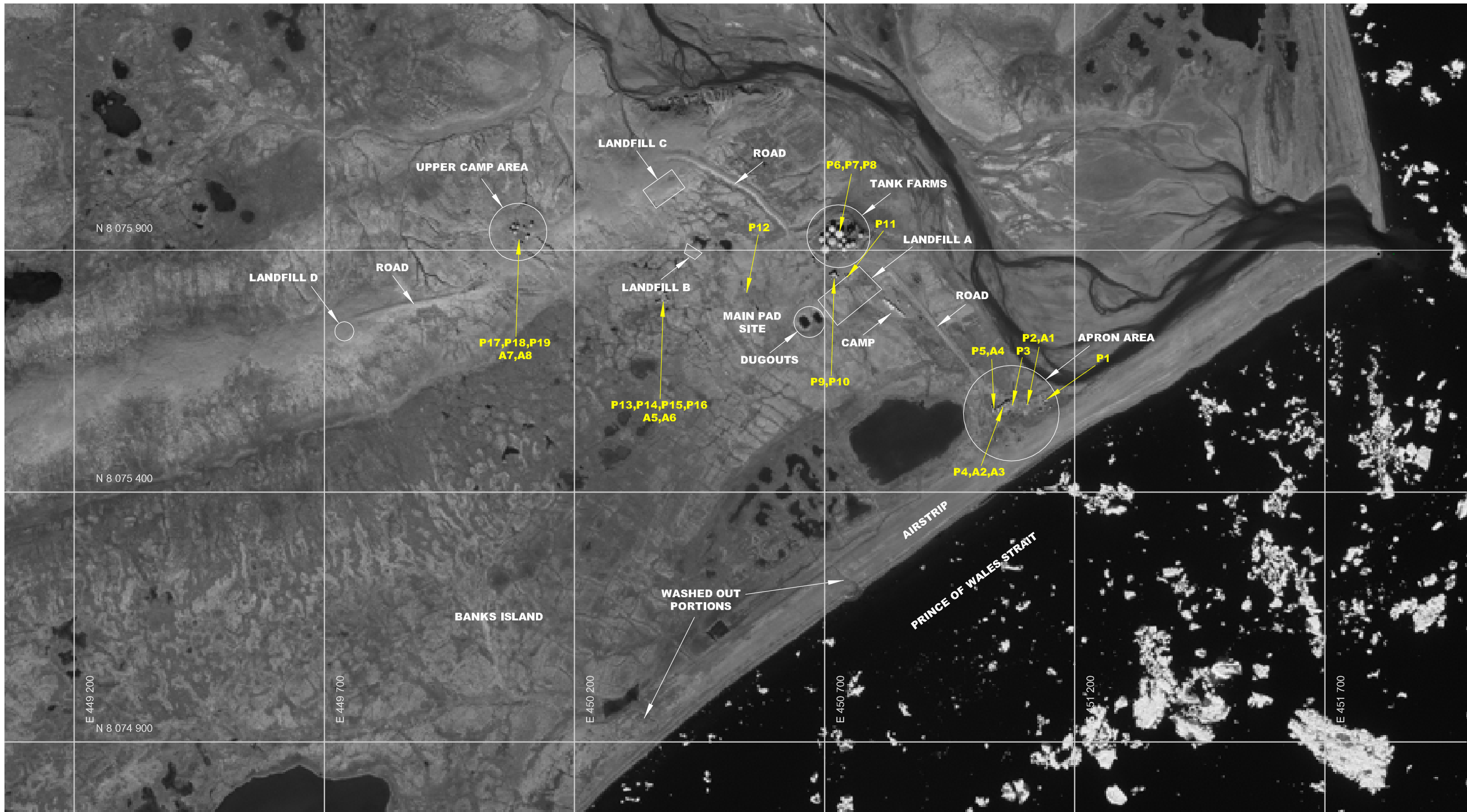
PROJECTION		DATUM	
Universal Transverse Mercator		NAD83	
Scale: 1:4,000			
50	25	0	50
Meters			
FILE NO. Figure_Monitoring			
PROJECT NO. 1740200	DWN JLB	CKD DD	REV 1
OFFICE EBA-RIV	DATE May 10, 2007		



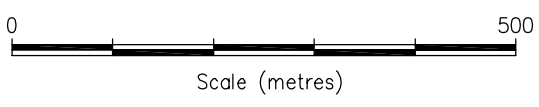
**Figure 5**

M:\Projects\07011740200M\Map\Figure\_Monitoring.mxd








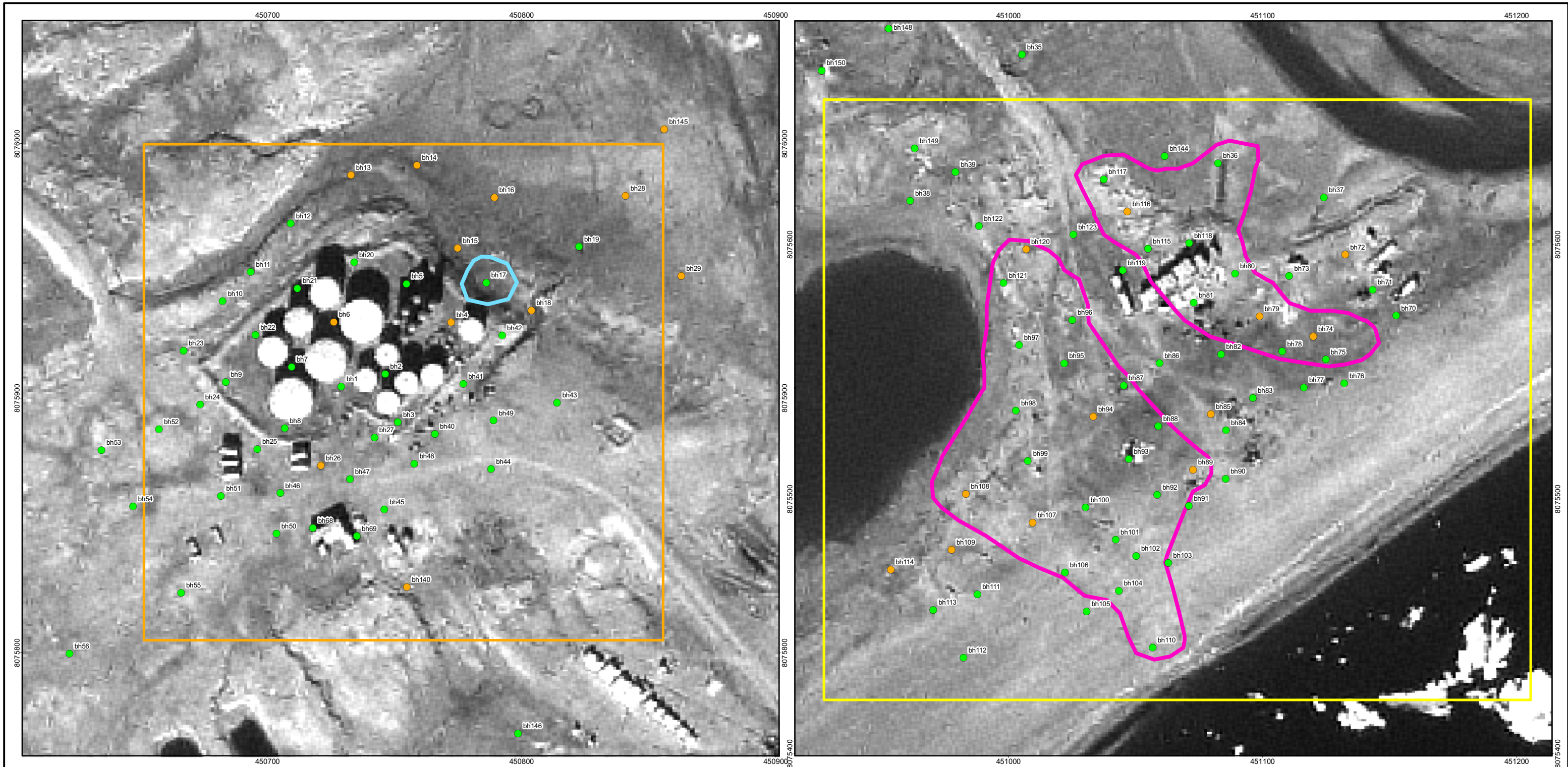
LEGEND:  
 A1 - ASBESTOS SAMPLE  
 P1 - PAINT SAMPLE



Q:\Edmonton\Drafting\DIVISIONS\0701\Projects\1740200\1740200Q28.dwg [Fig 6] November 28, 2007 - 3:21pm rthebar

CLIENT  Indian and Northern Affairs Canada / Affaires indiennes et du Nord Canada  		<b>Remediation Action Plan</b> <b>Johnson Point, NWT</b>			<b>FIGURE 6</b>	
<b>Paint and Asbestos Sampling Locations</b>		PROJECT NO./FILE NO. 1740200 1740200Q28b.dwg	DWN DBD	CKD HDZ		REV 1
EBA Engineering Consultants Ltd.		OFFICE EBA-EDM	DATE January 19, 2007			



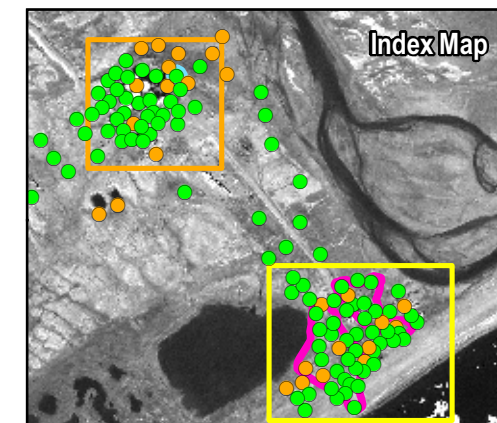


**LEGEND**

- Apron Area
- POL Area
- Bore Hole Location
- Monitoring Well
- ▭ Area Exceeding AMSP Protection of Aquatic Life Criteria
- ▭ Area Exceeding JWL Site Specific Target Level of 4,570 ppm TPH

**NOTES**

Base data source: INAC



**REMEDIAL ACTION PLAN,  
JOHNSON POINT, NWT**

**Areas Impacted by Hydrocarbons**

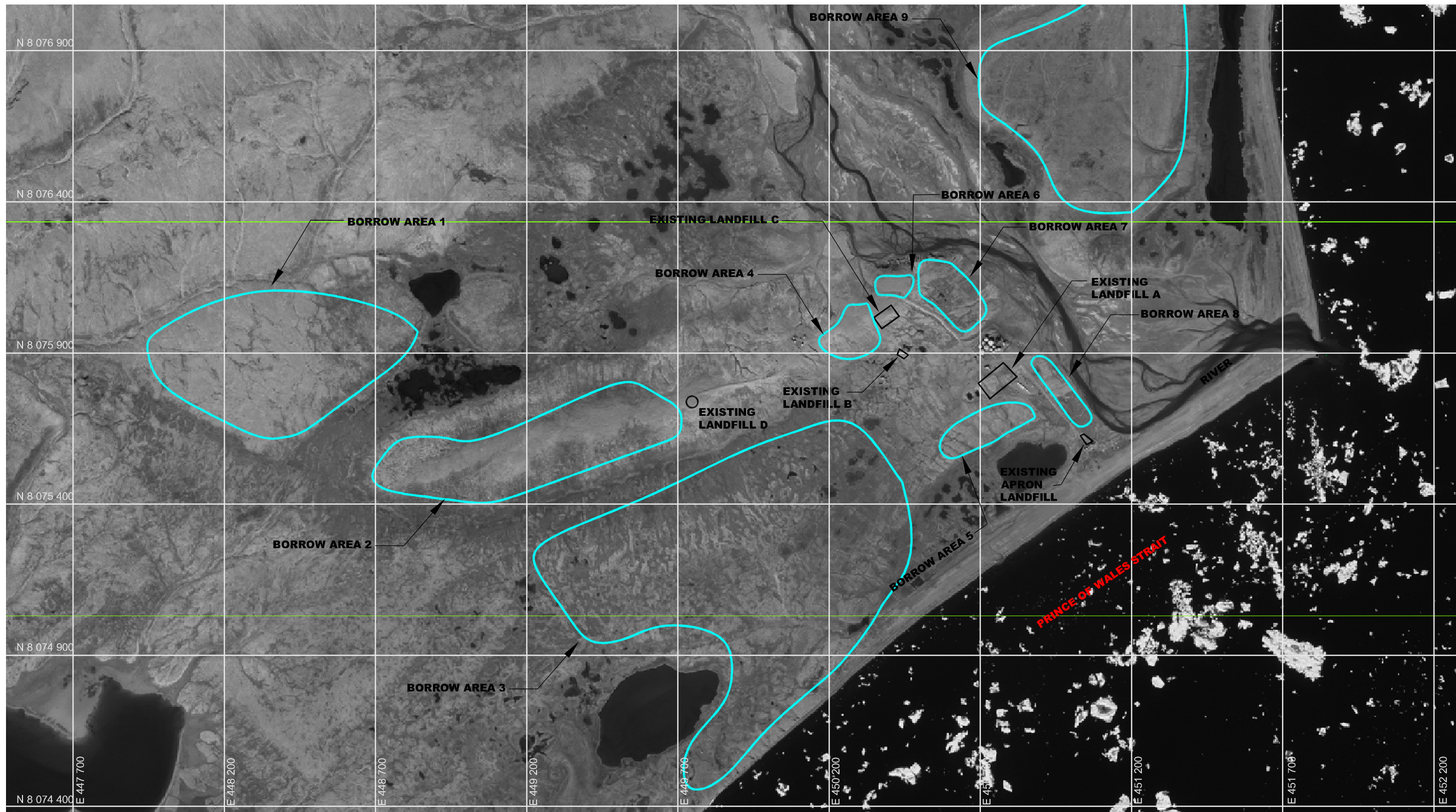
PROJECTION	UTM Zone 11			DATUM	NAD83		
Scale: 1:1,500							
25	12.5	0	12.5	25			
Meters							
FILE NO.	1740200_Figure_7						
PROJECT NO.	DWN	CKD	REV				
1740200	MS	HZV	5				
OFFICE	DATE						
EBA-RIV	Sept. 7, 2007						

EBA Engineering Consultants Ltd.

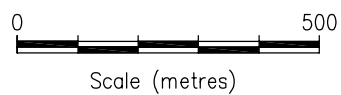
**Figure 7**

M:\Projects\07011740200M\aps1740200\_Figure\_7.mxd






LEGEND:  
 - PROPOSED BORROW AREAS



Q:\Edmonton\Drafting\DIVISIONS\0701\Projects\1740200\1740200T03.dwg [Figure 8] May 11, 2007 - 3:46pm Rhabert

CLIENT

 Indian and Northern Affairs Canada / Affaires indiennes et du Nord Canada

**Canada**

**EBA Engineering Consultants Ltd.**



**Remediation Action Plan  
 Johnson Point, NWT**

**Existing Landfills and  
 Proposed Borrow Locations**

PROJECT NO./FILE NO.  
 1740200  
 1740200T03a.dwg

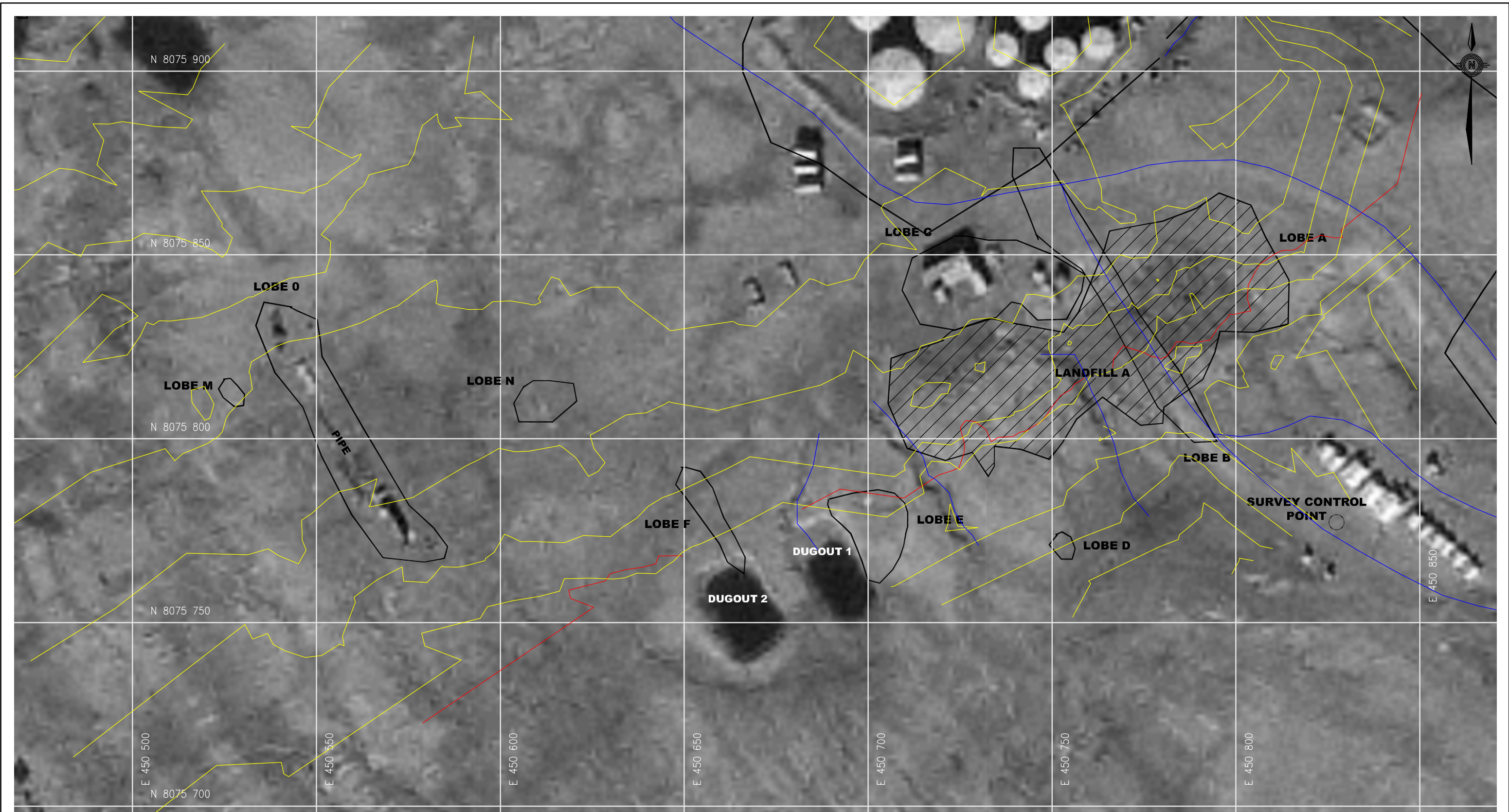
OFFICE  
 EBA-EDM

DWN TK	CKD KP	REV 1
-----------	-----------	----------

DATE  
 January 19, 2007

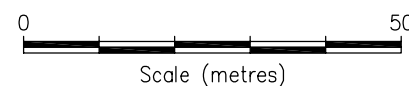
**Figure 8**





Q:\Edmonton\Drafting\DIVISIONS\0701\Projects\1740200\1740200Q27.dwg [Fig9] May 10, 2007 - 4:32pm Rhebert

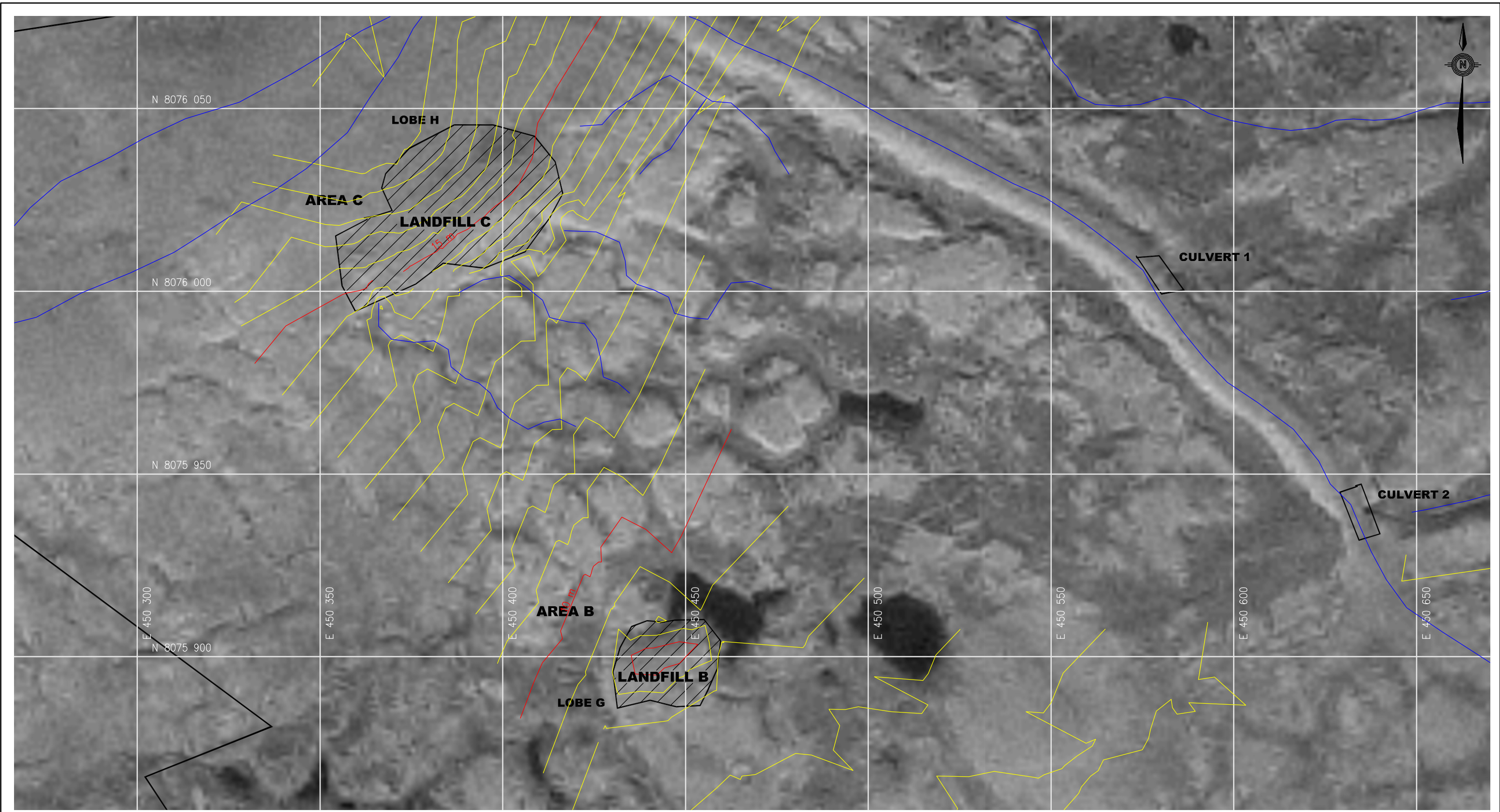
NOTE: UTM ZONE 11 NAD 83 DATUM



- LEGEND:**
- INDEX CONTOUR
  - INTERMEDIATE CONTOUR
  - GEOPHYSICS LOBES
  - DRAINAGE CHANNEL

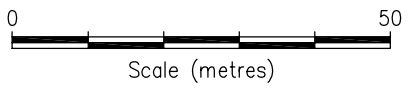
CLIENT Indian and Northern Affairs Canada / Affaires indiennes et du Nord Canada 		<b>Remedial Action Plan Johnson Point, NWT</b>		
		<b>Existing Landfill A</b>		
PROJECT NO./FILE NO. 1740200 1740200Q27a.dwg OFFICE EBA-EDM	DWN DBD CKD BH REV 1 DATE April 20, 2007	<b>FIGURE 9</b>		





Q:\Edmonton\Drafting\DIVISIONS\0701\Projects\1740200\1740200Q28a.dwg [Fig1] May 10, 2007 - 4:31pm Rhebar

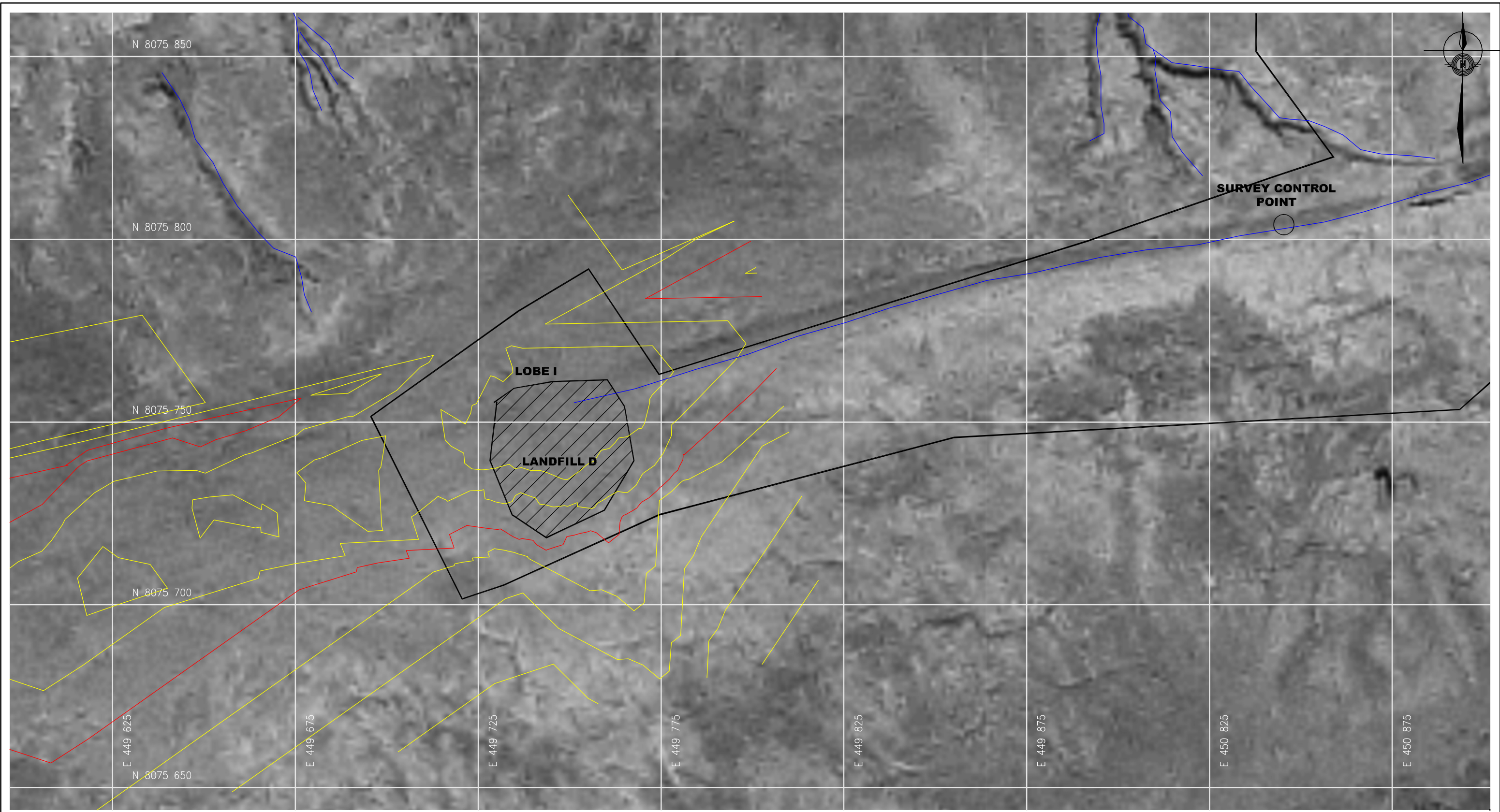
NOTE: UTM ZONE 11 NAD 83 DATUM



- LEGEND:
- INDEX CONTOUR
  - INTERMEDIATE CONTOUR
  - GEOPHYSICS LOBES
  - DRAINAGE CHANNEL

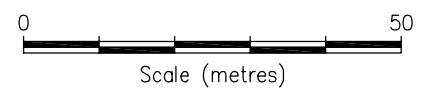
CLIENT Indian and Northern Affairs Canada / Affaires indiennes et du Nord Canada 		<b>Remedial Action Plan</b> <b>Johnson Point, NWT</b>		
		<b>Existing Landfills B and C</b>		
PROJECT NO./FILE NO. 1740200 1740200Q28a.dwg	DWN RH	CKD BH	REV 1	<b>Figure 10</b>
OFFICE EBA-EDM	DATE April 20, 2007			





Q:\Edmonton\Drafting\DIVISIONS\0701\Projects\1740200\1740200Q29a.dwg [Fig5] May 10, 2007 - 4:31pm Rhabert

NOTE: UTM ZONE 11 NAD 83 DATUM



- LEGEND:**
- INDEX CONTOUR
  - INTERMEDIATE CONTOUR
  - GEOPHYSICS LOBES
  - DRAINAGE CHANNEL

 <b>Canada</b>		<b>Remedial Action Plan Johnson Point, NWT</b>		
<b>EBA Engineering Consultants Ltd.</b>		<b>Existing Landfill D</b>		
CLIENT Indian and Northern Affairs Canada / Affaires indiennes et du Nord Canada	PROJECT NO./FILE NO. 1740200 / 1740200Q29a.dwg	DWN DBD	CKD BH	REV 1
OFFICE EBA-EDM	DATE April 20, 2007			<b>FIGURE 11</b>