



November 17, 2015

Inuvialuit Water Board
PO Box 2531
125 MacKenzie Road
Inuvik, NT X0E 0T0

Attention: Mardy Semmler – Executive Director

RE: N7L1-1836 – BAR-C – 2015 Civil Earthworks As-Built Drawings

Imperial is providing the following information as per the requirements listed in Part C Item 2 and Part F Item 3 for Water Licence Number N7L1-1836.

As per requirements regarding construction of the engineering caps for Landfills A and B at BAR-C, please find attached signed and stamped copies of the final 2015 as-built drawings for these landfills covers and for the Area F waste disposal areas.

Please contact the undersigned at 587-476-4262 or ramy.rahbani@esso.ca should you have any questions or concerns.

Regards,

Ramy Rahbani
Project Manager
Environmental Services, Imperial

Cc Bijaya Adhikari – IWB

ESSO IMPERIAL OIL BAR-C TUNUNUK POINT NT LANDFILL AND DEBRIS CAPPING

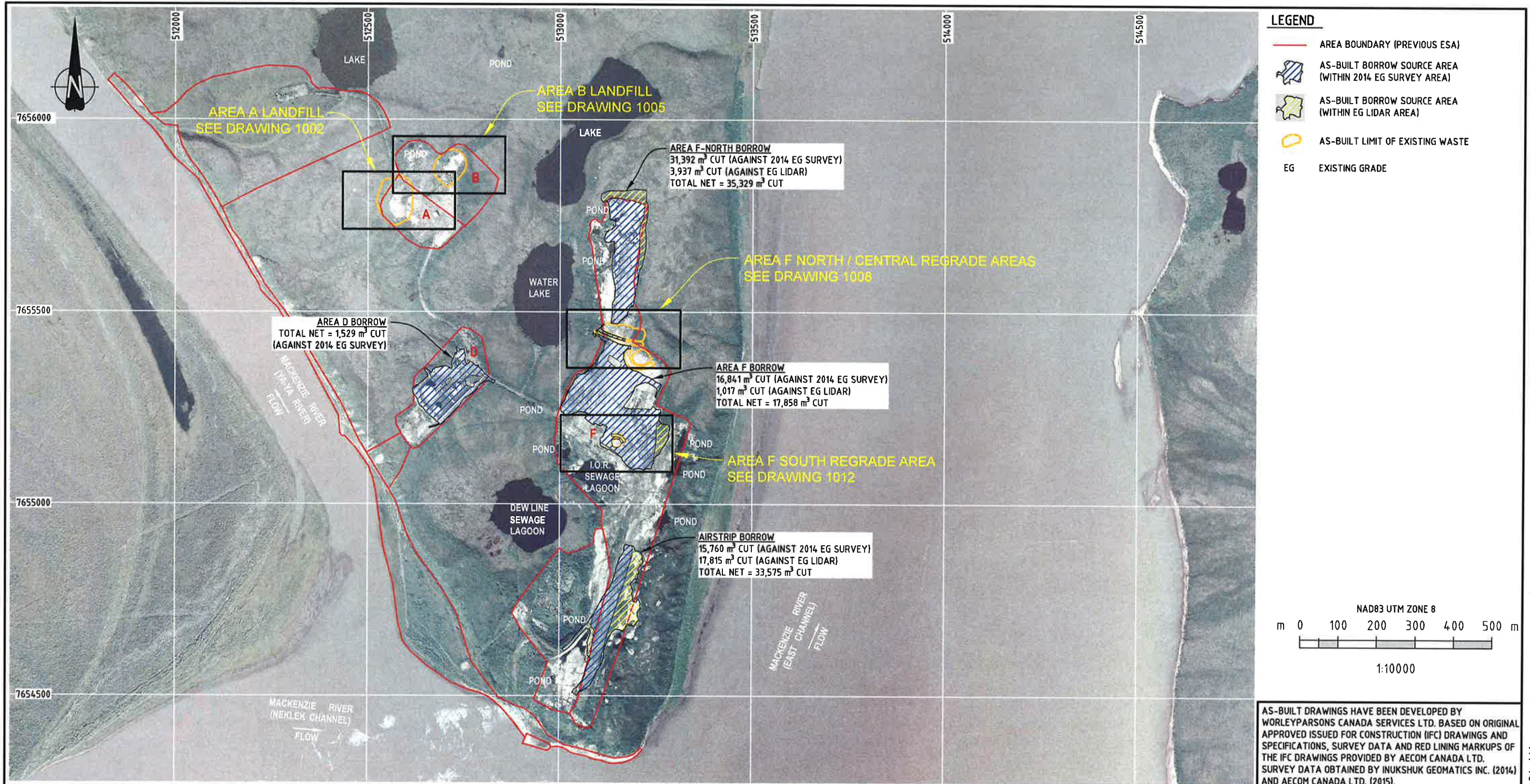
ISSUED FOR AS-BUILT

PROJECT NO. 307074-00983

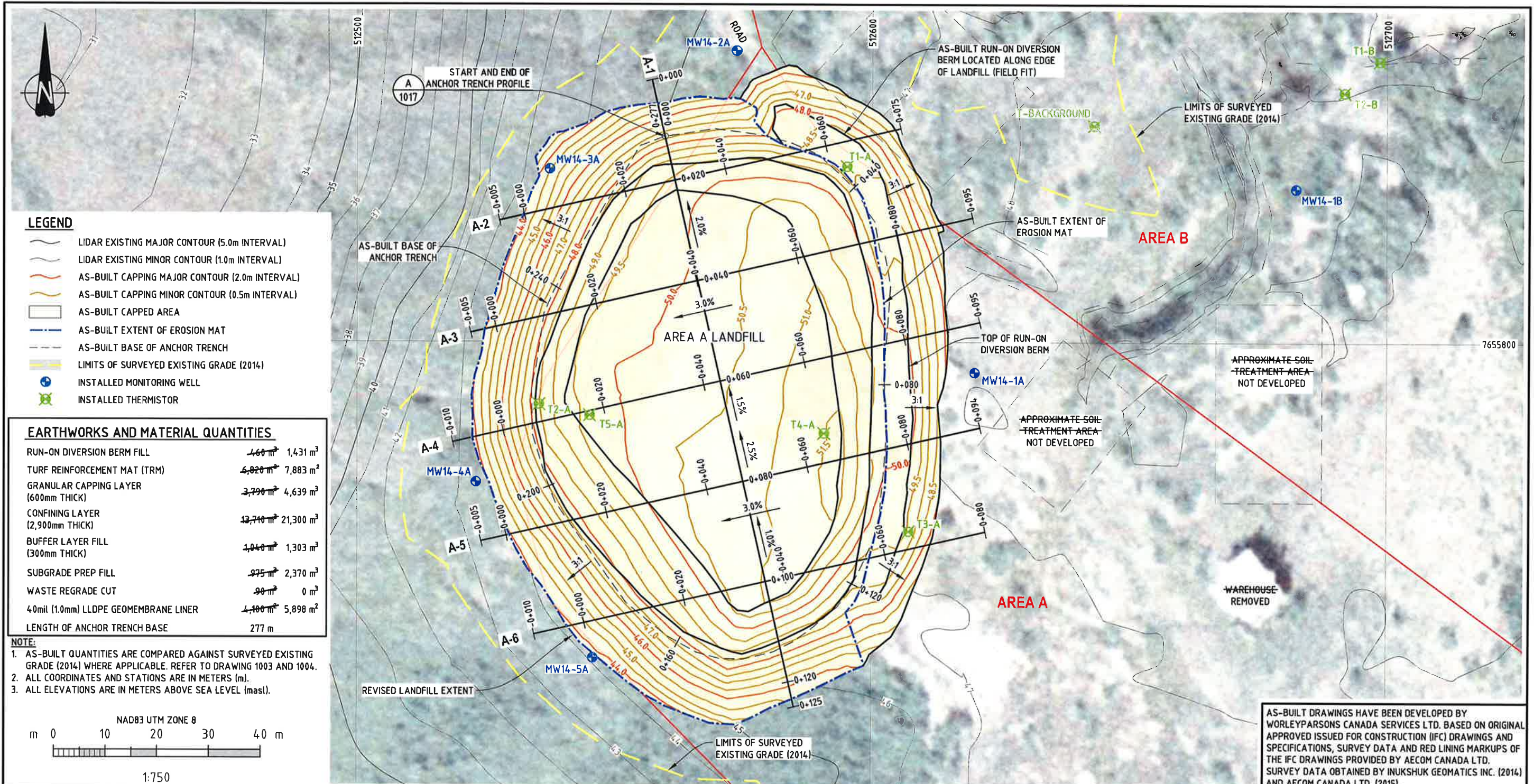
DWG. NO	DESCRIPTION
307074-00983-00-CI-DGA-1001	SITE PLAN
307074-00983-00-CI-DGA-1002	AREA A LANDFILL - CLOSURE CAP - PLAN
307074-00983-00-CI-DGA-1003	AREA A LANDFILL - CLOSURE CAP - SECTIONS 1 OF 2
307074-00983-00-CI-DGA-1004	AREA A LANDFILL - CLOSURE CAP - SECTIONS 2 OF 2
307074-00983-00-CI-DGA-1005	AREA B LANDFILL - CLOSURE CAP - PLAN
307074-00983-00-CI-DGA-1006	AREA B LANDFILL - CLOSURE CAP - SECTIONS 1 OF 2
307074-00983-00-CI-DGA-1007	AREA B LANDFILL - CLOSURE CAP - SECTIONS 2 OF 2
307074-00983-00-CI-DGA-1008	AREA F (NORTH/CENTRAL) - REGRADE AREAS - PLAN
307074-00983-00-CI-DGA-1009	AREA F (NORTH) - REGRADE AREA - SECTIONS 1 OF 2
307074-00983-00-CI-DGA-1010	AREA F (NORTH) - REGRADE AREA - SECTIONS 2 OF 2
307074-00983-00-CI-DGA-1011	AREA F (CENTRAL) - REGRADE AREA - SECTIONS
307074-00983-00-CI-DGA-1012	AREA F (SOUTH) - REGRADE AREA - PLAN
307074-00983-00-CI-DGA-1013	AREA F (SOUTH) - REGRADE AREA - SECTIONS
307074-00983-00-CI-DGA-1014	AREA A AND B LANDFILL - CAP STRUCTURE DETAILS
307074-00983-00-CI-DGA-1015	AREA F - REGRADE AREA - CAP STRUCTURE DETAIL
307074-00983-00-CI-DGA-1016	DIVERSION BERM - DETAILS
307074-00983-00-CI-DGA-1017	AREA A AND B LANDFILL - ANCHOR TRENCH PROFILES



"This drawing is prepared solely for the use of the contractual customer of
WorleyParsons Canada Services Ltd and WorleyParsons Canada Services Ltd assumes
no liability to any other party for any representations contained in this drawing"



								B SHEET	SCALE	SHOWN	ENGINEERING AND PERMIT STAMPS	CUSTOMER	<p>WorleyParsons resources & energy</p> <p>BAR-C TUNUNUK POINT, NT SITE PLAN</p>	
2	10-NOV-15	RE-ISSUED FOR AS-BUILT (FINAL)	PS	EM	-	-	NP	<p>OneWayTM to zero harm</p> <p>PERMIT TO PRACTICE WORLEYPARSONS Canada Services Ltd. Signature: <i>Max Noyes</i> Date: <i>Nov 13, 2015</i> PERMIT NUMBER: 9 029 NWT/NT Association of Professional Engineers and Geoscientists</p>						
1	13-JAN-15	ISSUED FOR AS-BUILT	PS	EM	-	-	DD	WORLEYPARSONS PROJECT No.		"This drawing is prepared solely for the use of the contractual customer of WorleyParsons Canada Services Ltd. and WorleyParsons Canada Services Ltd. assumes no liability to any other party for any representations contained in this drawing."		DRG No	REV	
0	23-APR-14	ISSUED FOR CONSTRUCTION	CD	GG	GG	HT	DD	307074-00983				307074-00983-00-CI-DGA-1001	2	
B	13-SEP-13	ISSUED FOR TENDER	CD	GG	GG	HT	DD							
A	28-AUG-13	ISSUED FOR CLIENT REVIEW	CD	GG	GG	HT	DD							
REV	DATE	REVISION DESCRIPTION	DRN	CHKD	DES	ENG	CHK	APPRD	CUST					



REV	DATE	REVISION DESCRIPTION	DRN	CHKD	DES	ENG	CHK	APPRD	CUST
2	10-NOV-15	RE-ISSUED FOR AS-BUILT (FINAL)	PS	EM	-	-	-	NP	
1	13-JAN-15	ISSUED FOR AS-BUILT	PS	EM	-	-	-	DD	
0	23-APR-14	ISSUED FOR CONSTRUCTION	CD	GG	GG	HT	DD		
B	13-SEP-13	ISSUED FOR TENDER	CD	GG	GG	HT	DD		
A	28-AUG-13	ISSUED FOR CLIENT REVIEW	CD	GG	GG	HT	DD		

B SHEET SCALE SHOWN ENGINEERING AND PERMIT STAMPS CUSTOMER

OneWayTM
to zero harm

PERMIT TO PRACTICE
WORLEYPARSONS CANADA SERVICES LTD.
Signature: *N.R. Payne*
Date: *Nov 13, 2015*
PERMIT NUMBER: P 020
NWTNU Association of Professional Engineers and Geoscientists

REGISTERED PROFESSIONAL ENGINEER
N.R. PAYNE
LICENSEE
Nov 12, 2015
NT/NU

WORLEYPARSONS PROJECT No.
307074-00983

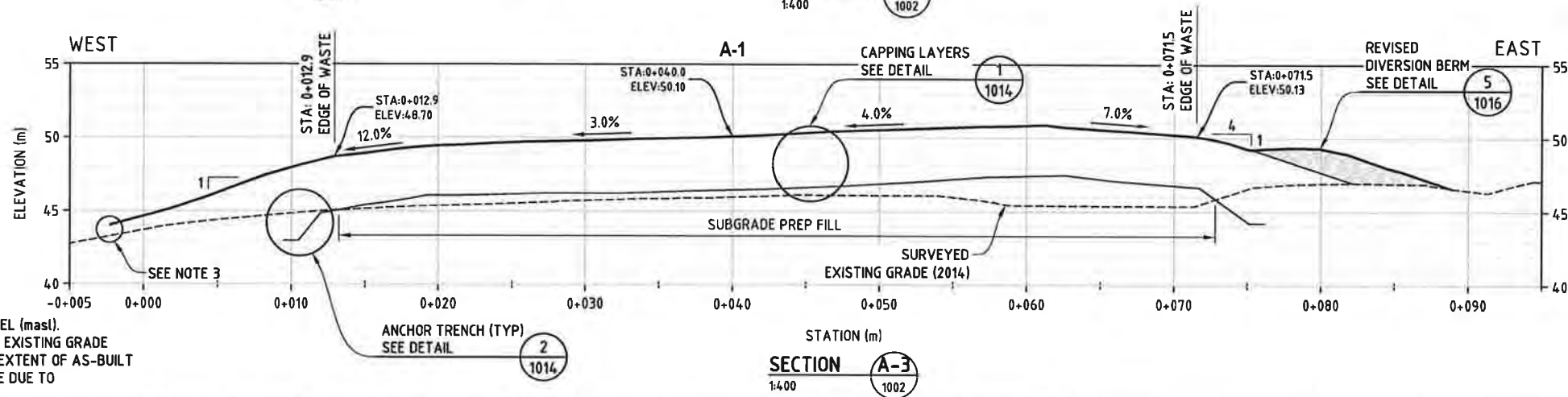
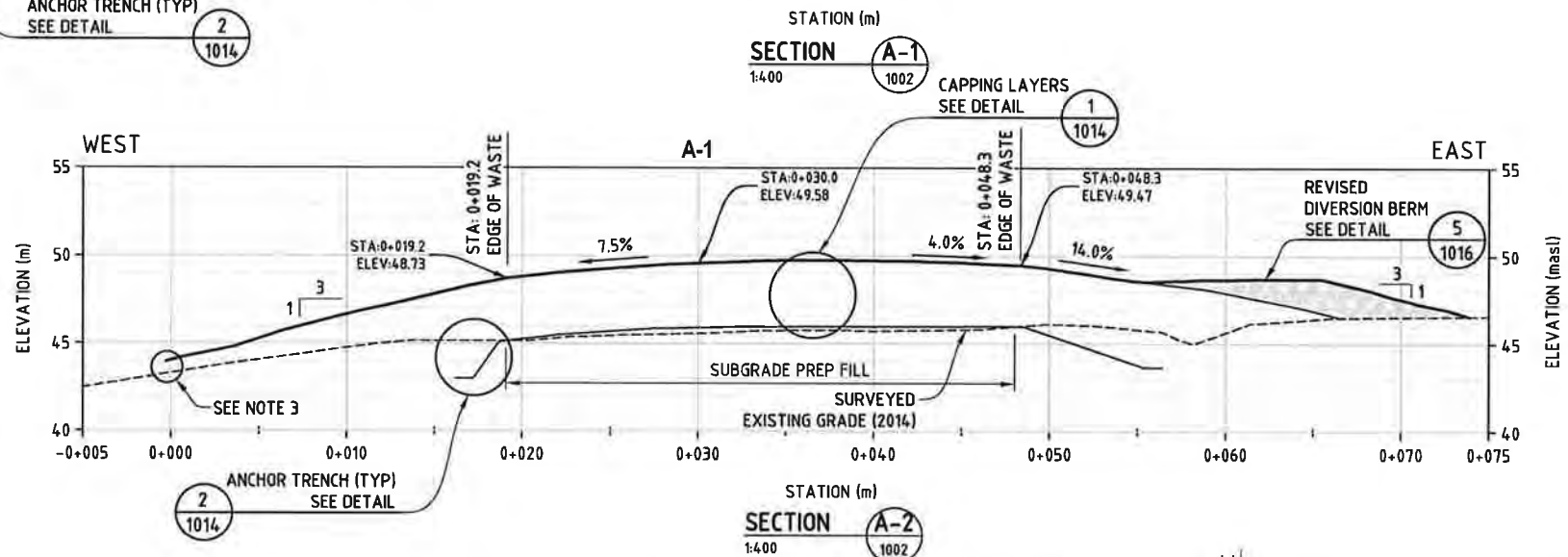
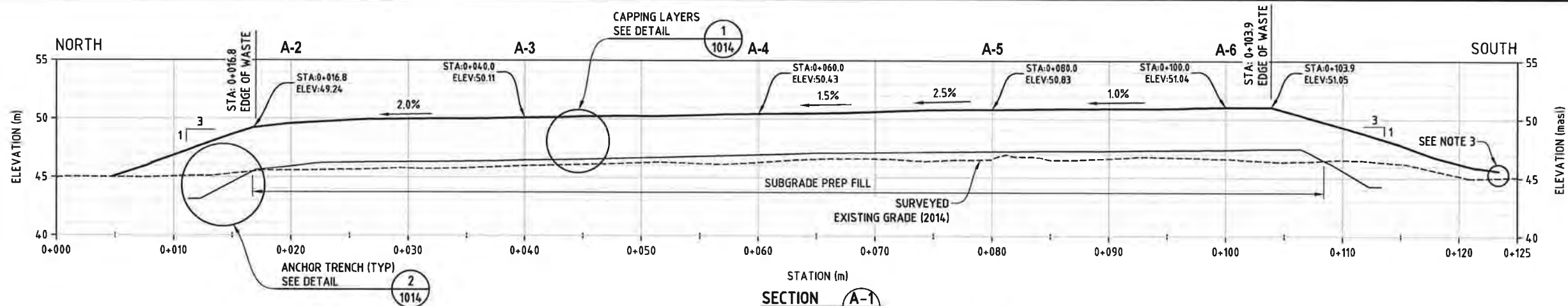
"This drawing is prepared solely for the use of the contractual customer of WorleyParsons Canada Services Ltd. and WorleyParsons Canada Services Ltd. assumes no liability to any other party for any representations contained in this drawing."

WorleyParsons
resources & energy

BAR-C TUNUNUK POINT, NT
AREA A LANDFILL
CLOSURE CAP - PLAN

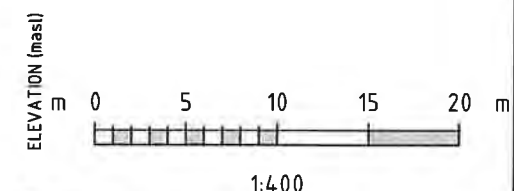
DRG No
307074-00983-00-CI-DGA-1002

REV
2



- NOTE:**
1. ALL STATIONS ARE IN METERS (m).
 2. ALL ELEVATIONS ARE IN METERS ABOVE SEA LEVEL (masl).
 3. CAP STRUCTURE TERMINATION RELATIVE TO 2014 EXISTING GRADE SURVEY ELEVATION REPRESENTS DIFFERENCE IN EXTENT OF AS-BUILT SURVEY AND ELEVATION OF RE-GRADED SURFACE DUE TO RECLAMATION ACTIVITIES.

AS-BUILT DRAWINGS HAVE BEEN DEVELOPED BY WORLEYPARSONS CANADA SERVICES LTD. BASED ON ORIGINAL APPROVED ISSUED FOR CONSTRUCTION (IFC) DRAWINGS AND SPECIFICATIONS, SURVEY DATA AND RED LINING MARKUPS OF THE IFC DRAWINGS PROVIDED BY AECOM CANADA LTD. SURVEY DATA OBTAINED BY INUKSHUK GEOMATICS INC. (2014) AND AECOM CANADA LTD. (2015).



REV	DATE	REVISION DESCRIPTION	DRN	CHKD	DES	ENG	CHK	APPRD	CUST
2	10-NOV-15	RE-ISSUED FOR AS-BUILT (FINAL)	PS	EM	-	-	-	NP	
1	13-JAN-15	ISSUED FOR AS-BUILT	PS	EM	-	-	-	DD	
0	23-APR-14	ISSUED FOR CONSTRUCTION	CD	GG	GG	HT	DD		
B	13-SEP-13	ISSUED FOR TENDER	CD	GG	GG	HT	DD		
A	28-AUG-13	ISSUED FOR CLIENT REVIEW	CD	GG	GG	HT	DD		

B SHEET SCALE SHOWN ENGINEERING AND PERMIT STAMPS CUSTOMER

Oneway™
to zero harm

PERMIT TO PRACTICE
WORLEYPARSONS CANADA SERVICES LTD.
Date: Nov 13, 2015
PERMIT NUMBER: P 029
NTNU Association of Professional Engineers and Geoscientists

REGISTERED PROFESSIONAL ENGINEER
N.R. PAYNE
LICENSEE
Nov 12, 2015
NTNU

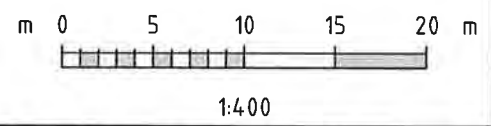
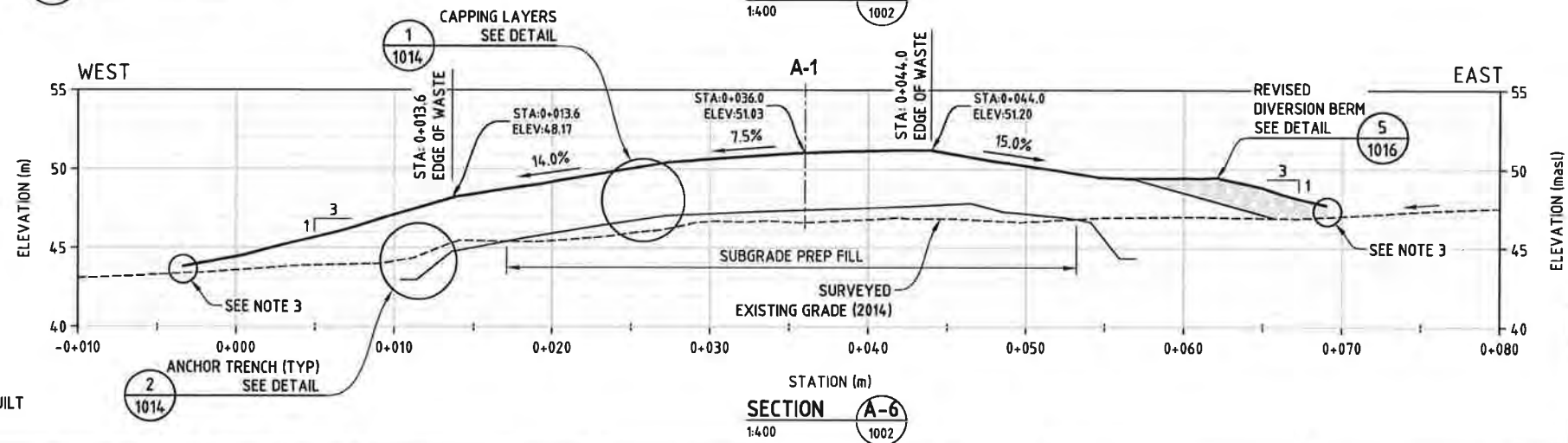
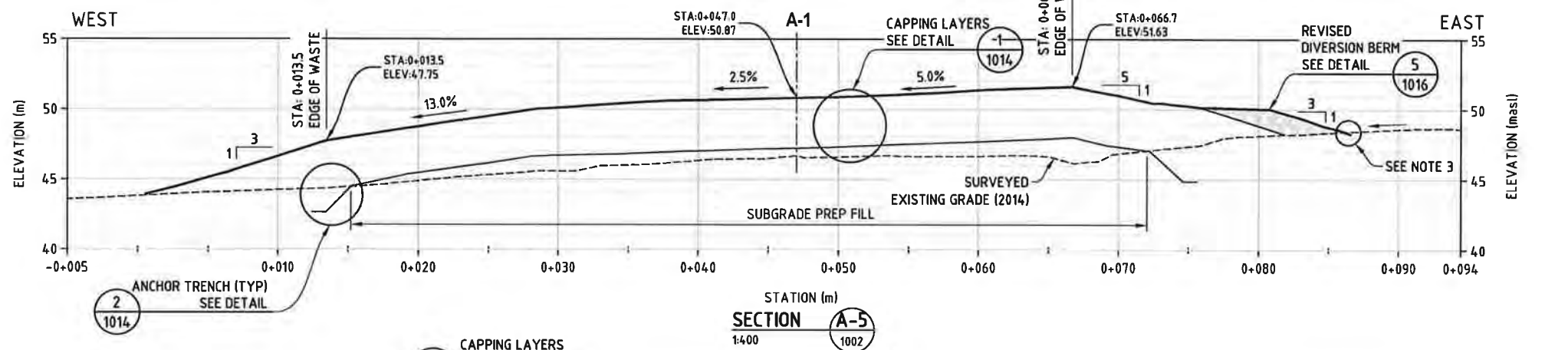
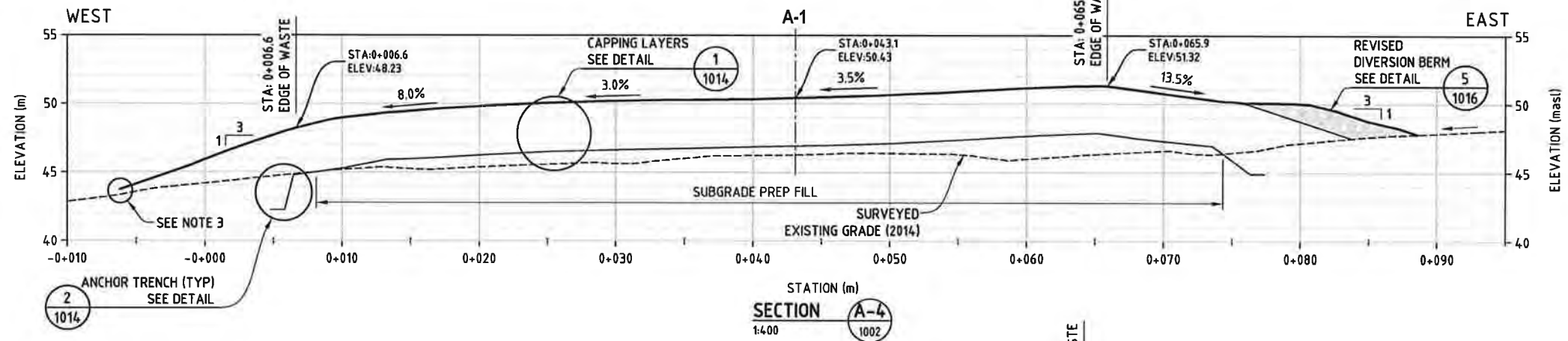
WORLEYPARSONS PROJECT No.
307074-00983

"This drawing is prepared solely for the use of the contractual customer of WorleyParsons Canada Services Ltd. and WorleyParsons Canada Services Ltd. assumes no liability to any other party for any representations contained in this drawing."

WorleyParsons
resources & energy

BAR-C TUNUNUK POINT, NT
AREA A LANDFILL
CLOSURE CAP - SECTIONS 1 OF 2

DRG No **307074-00983-00-CI-DGA-1003** REV **2**



NOTE:
 1. ALL STATIONS ARE IN METERS (m).
 2. ALL ELEVATIONS ARE IN METERS ABOVE SEA LEVEL (masl).
 3. CAP STRUCTURE TERMINATION RELATIVE TO 2014 EXISTING GRADE SURVEY ELEVATION REPRESENTS DIFFERENCE IN EXTENT OF AS-BUILT SURVEY AND ELEVATION OF RE-GRADED SURFACE DUE TO RECLAMATION ACTIVITIES.

AS-BUILT DRAWINGS HAVE BEEN DEVELOPED BY WORLEYPARSONS CANADA SERVICES LTD. BASED ON ORIGINAL APPROVED ISSUED FOR CONSTRUCTION (IFC) DRAWINGS AND SPECIFICATIONS, SURVEY DATA AND RED LINING MARKUPS OF THE IFC DRAWINGS PROVIDED BY AECOM CANADA LTD. SURVEY DATA OBTAINED BY INUKSHUK GEOMATICS INC. (2014) AND AECOM CANADA LTD. (2015).

REV	DATE	REVISION DESCRIPTION	DRN	CHKD	DES	ENG CHK	APPRD	CUST
2	10-NOV-15	RE-ISSUED FOR AS-BUILT (FINAL)	PS	EM	-	-	NP	
1	13-JAN-15	ISSUED FOR AS-BUILT	PS	EM	-	-	DD	
0	23-APR-14	ISSUED FOR CONSTRUCTION	CD	GG	GG	HT	DD	
B	13-SEP-13	ISSUED FOR TENDER	CD	GG	GG	HT	DD	
A	28-AUG-13	ISSUED FOR CLIENT REVIEW	CD	GG	GG	HT	DD	

B SHEET SCALE SHOWN

OnewayTH
to zero harm

PERMIT TO PRACTICE
 WORLEYPARSONS CANADA SERVICES LTD.
 Signature: *[Signature]*
 Date: *NOV 13, 2015*
 PERMIT NUMBER: P 020
 NWTARJ Association of Professional Engineers and Geoscientists

WORLEYPARSONS PROJECT No.
307074-00983

ENGINEERING AND PERMIT STAMPS

REGISTERED PROFESSIONAL ENGINEER
[Signature]
 N.R. PAYNE
 LICENSEE
Nov 16, 2015
 NT/NU

CUSTOMER

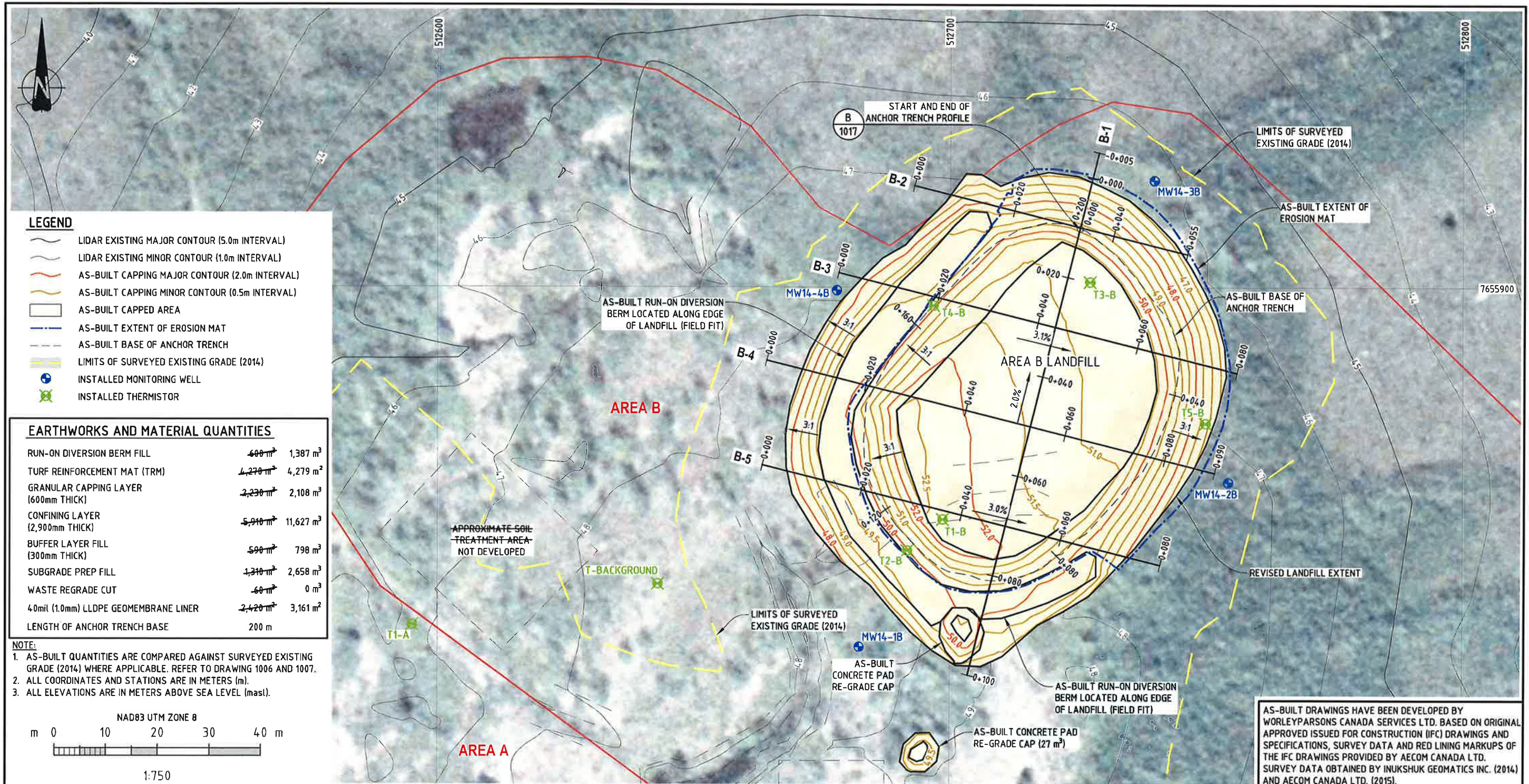
"This drawing is prepared solely for the use of the contractual customer of WorleyParsons Canada Services Ltd. and WorleyParsons Canada Services Ltd. assumes no liability to any other party for any representations contained in this drawing."

WorleyParsons
resources & energy

BAR-C TUNUNUK POINT, NT
 AREA A LANDFILL
 CLOSURE CAP - SECTIONS 2 OF 2

DRG No **307074-00983-00-CI-DGA-1004**

REV **2**



REV	DATE	REVISION DESCRIPTION	DRN	CHKD	DES	ENG	CHK	APPRD	CUST
2	10-NOV-15	RE-ISSUED FOR AS-BUILT (FINAL)	PS	EM	-	-	-	NP	
1	13-JAN-15	ISSUED FOR AS-BUILT	PS	EM	-	-	-	DD	
0	23-APR-14	ISSUED FOR CONSTRUCTION	CD	GG	GG	HT	DD		
B	13-SEP-13	ISSUED FOR TENDER	CD	GG	GG	HT	DD		
A	28-AUG-13	ISSUED FOR CLIENT REVIEW	CD	GG	GG	HT	DD		

B SHEET SCALE SHOWN ENGINEERING AND PERMIT STAMPS CUSTOMER

Oneway
to zero harm

PERMIT TO PRACTICE
WORLEYPARSONS CANADA SERVICES LTD.
Signature: *M. Payne*
Date: *Nov 13, 2015*
PERMIT NUMBER: P 029
NWT&N Association of Professional Engineers and Geoscientists

REGISTERED PROFESSIONAL ENGINEER
N.R. PAYNE
LICENSEE
Nov 12, 2013
NT/NU

WORLEYPARSONS PROJECT No.
307074-00983

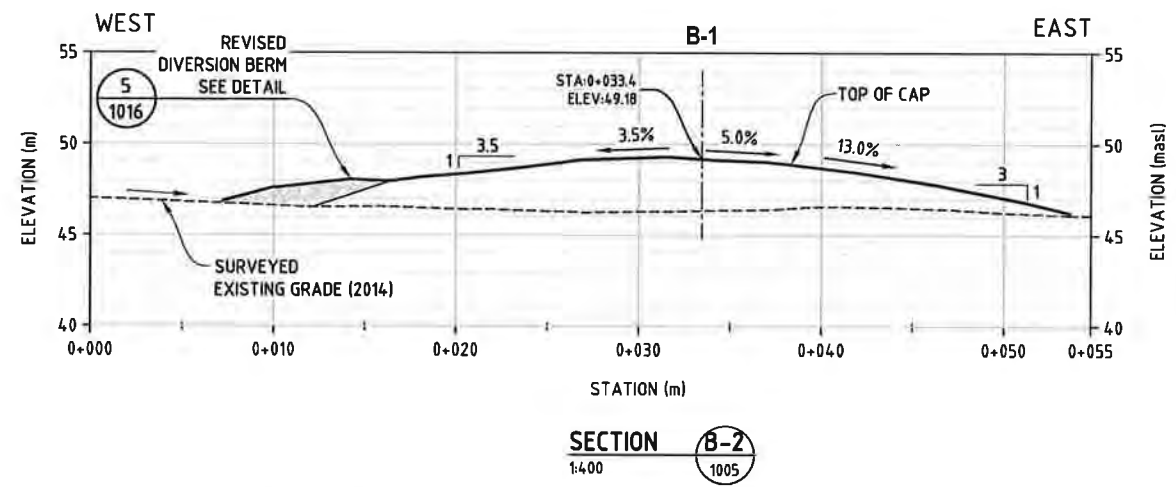
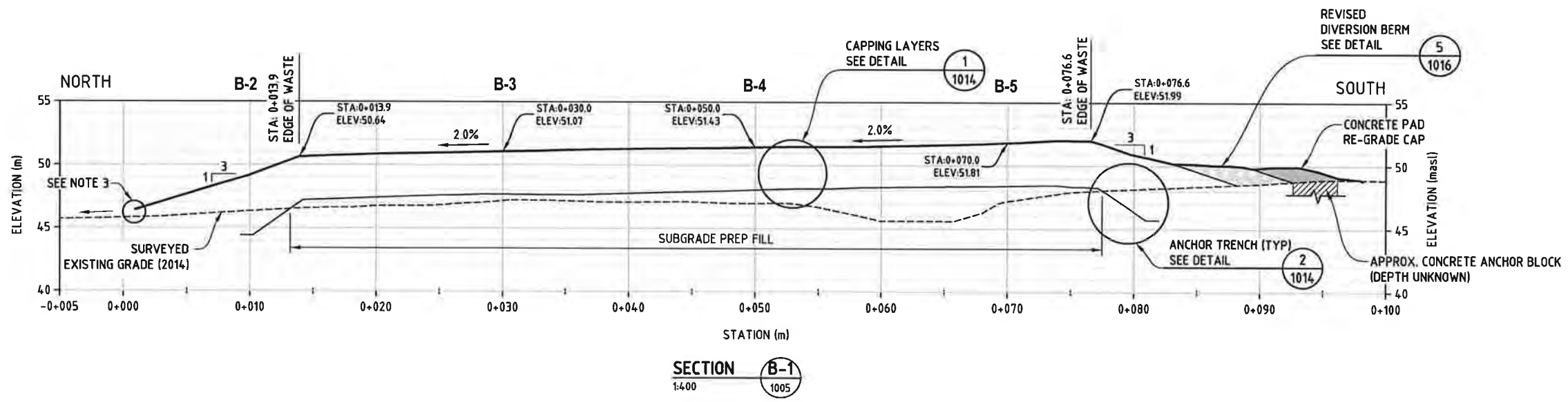
"This drawing is prepared solely for the use of the contractual customer of WorleyParsons Canada Services Ltd. and WorleyParsons Canada Services Ltd. assumes no liability to any other party for any representations contained in this drawing."

WorleyParsons
resources & energy

BAR-C TUNUNUK POINT, NT
AREA B LANDFILL
CLOSURE CAP - PLAN

DRG No
307074-00983-00-CI-DGA-1005

REV
2



NOTE:
 1. ALL STATIONS ARE IN METERS (m).
 2. ALL ELEVATIONS ARE IN METERS ABOVE SEA LEVEL (masl).
 3. CAP STRUCTURE TERMINATION RELATIVE TO 2014 EXISTING GRADE SURVEY ELEVATION REPRESENTS DIFFERENCE IN EXTENT OF AS-BUILT SURVEY AND ELEVATION OF RE-GRADED SURFACE DUE TO RECLAMATION ACTIVITIES.

AS-BUILT DRAWINGS HAVE BEEN DEVELOPED BY WORLEYPARSONS CANADA SERVICES LTD. BASED ON ORIGINAL APPROVED ISSUED FOR CONSTRUCTION (IFC) DRAWINGS AND SPECIFICATIONS, SURVEY DATA AND RED LINING MARKUPS OF THE IFC DRAWINGS PROVIDED BY AECOM CANADA LTD. SURVEY DATA OBTAINED BY INUKSHUK GEOMATICS INC. (2014) AND AECOM CANADA LTD. (2015).

REV	DATE	REVISION DESCRIPTION	DRN	CHKD	DES	ENG	CHK	APPRD	CUST
2	10-NOV-15	RE-ISSUED FOR AS-BUILT (FINAL)	PS	EM	-	-	-	NP	
1	13-JAN-15	ISSUED FOR AS-BUILT	PS	EM	-	-	-	DD	
0	23-APR-14	ISSUED FOR CONSTRUCTION	CD	GG	GG	HT	DD		
B	13-SEP-13	ISSUED FOR TENDER	CD	GG	GG	HT	DD		
A	28-AUG-13	ISSUED FOR CLIENT REVIEW	CD	GG	GG	HT	DD		

B SHEET SCALE SHOWN ENGINEERING AND PERMIT STAMPS CUSTOMER

Oneway
to zero harm

PERMIT TO PRACTICE
WORLEYPARSONS CANADA SERVICES LTD.
N.R. PAYNE
LICENSEE
NOV 13, 2015
PERMIT NUMBER: P 029
NT/NU Association of Professional Engineers and Geoscientists

REGISTERED PROFESSIONAL ENGINEER
N.R. PAYNE
LICENSEE
NOV 12, 2015
NT/NU

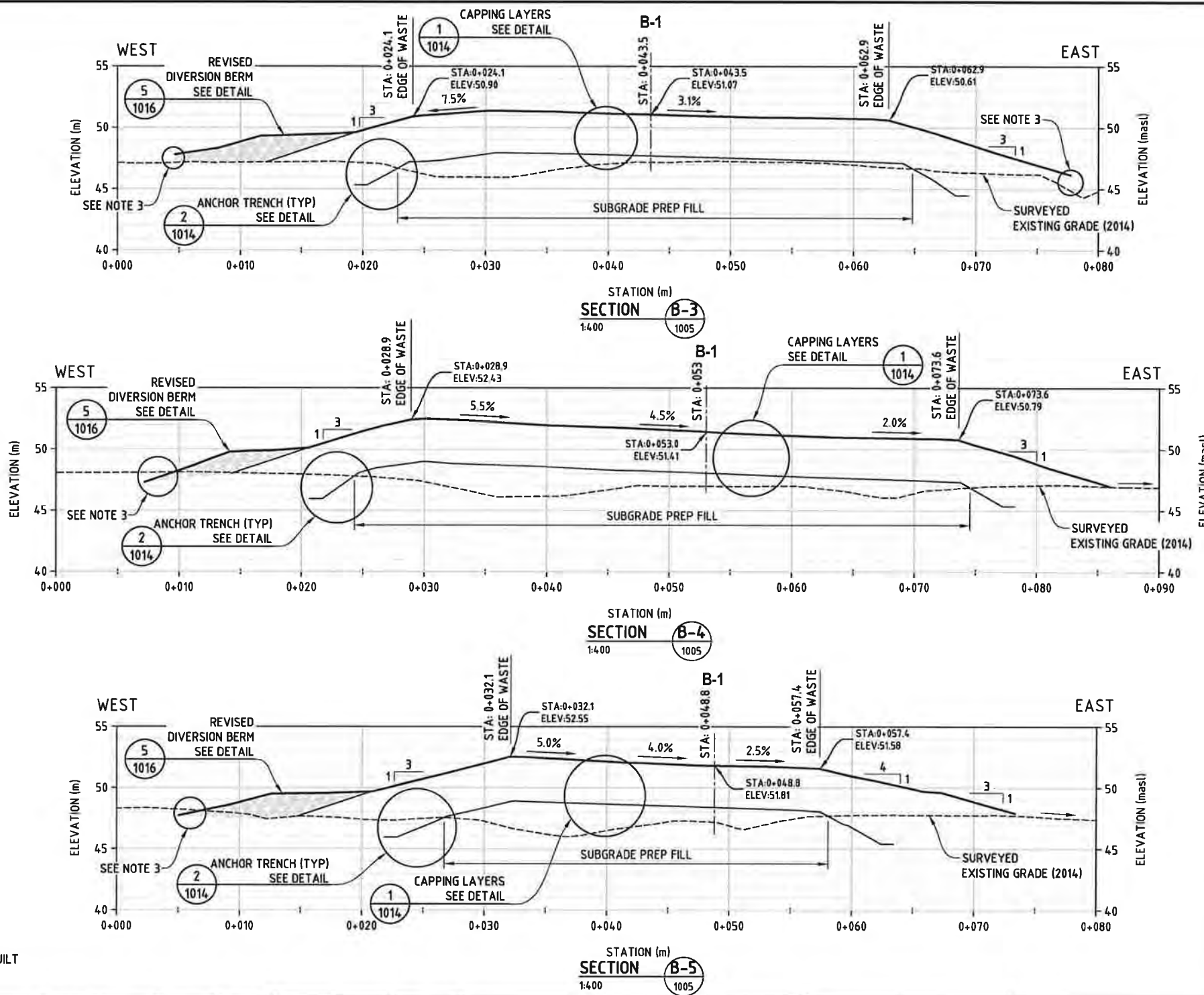
WORLEYPARSONS PROJECT No.
307074-00983

"This drawing is prepared solely for the use of the contractual customer of WorleyParsons Canada Services Ltd. and WorleyParsons Canada Services Ltd. assumes no liability to any other party for any representations contained in this drawing."

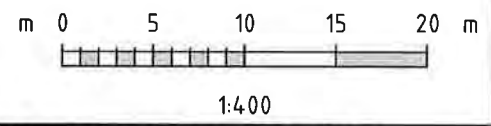
WorleyParsons
resources & energy

BAR-C TUNUNUK POINT, NT
AREA B LANDFILL
CLOSURE CAP - SECTIONS 1 OF 2

DRG No **307074-00983-00-CI-DGA-1006** REV **2**

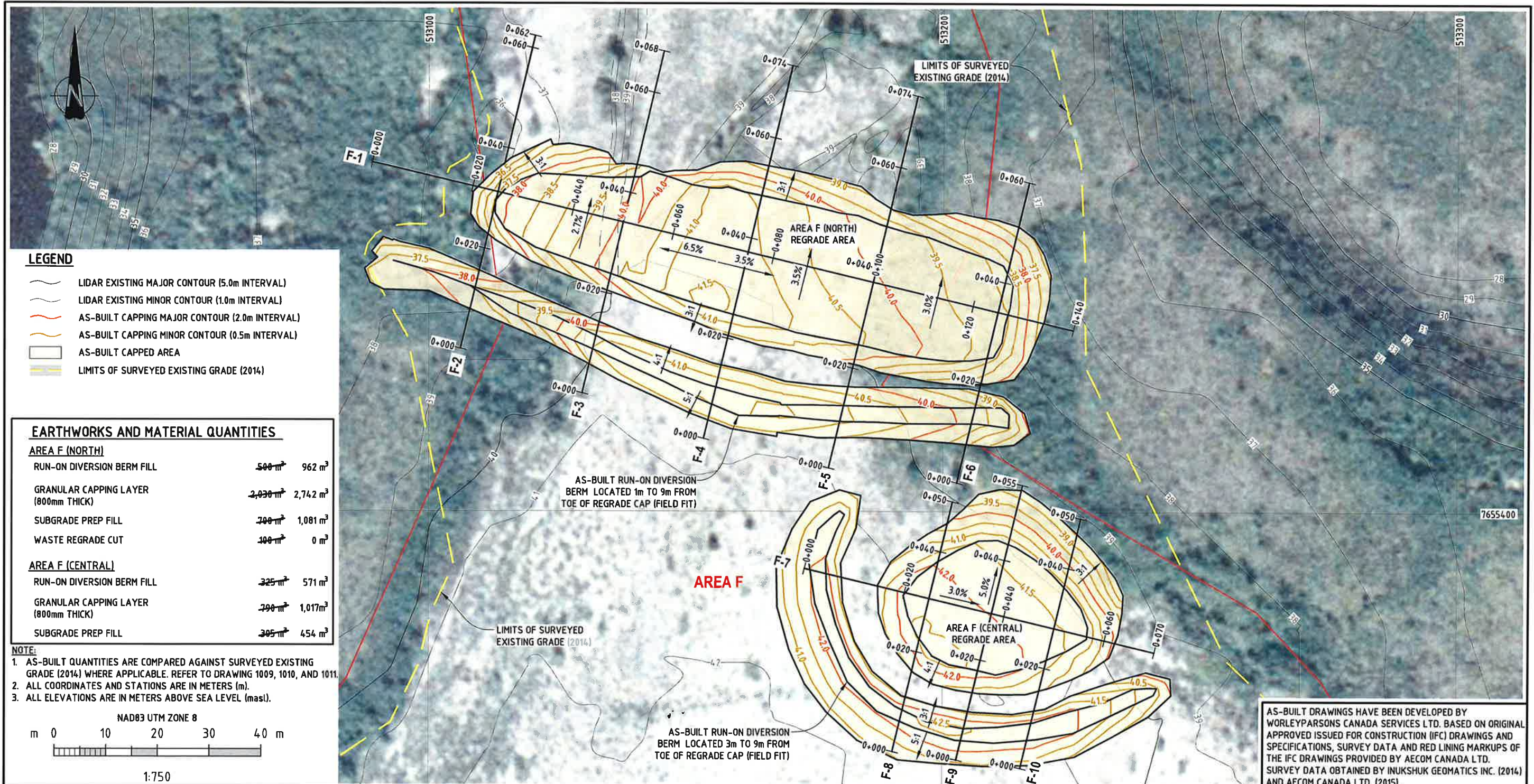


NOTE:
 1. ALL STATIONS ARE IN METERS (m).
 2. ALL ELEVATIONS ARE IN METERS ABOVE SEA LEVEL (masl).
 3. CAP STRUCTURE TERMINATION RELATIVE TO 2014 EXISTING GRADE SURVEY ELEVATION REPRESENTS DIFFERENCE IN EXTENT OF AS-BUILT SURVEY AND ELEVATION OF RE-GRADED SURFACE DUE TO RECLAMATION ACTIVITIES.

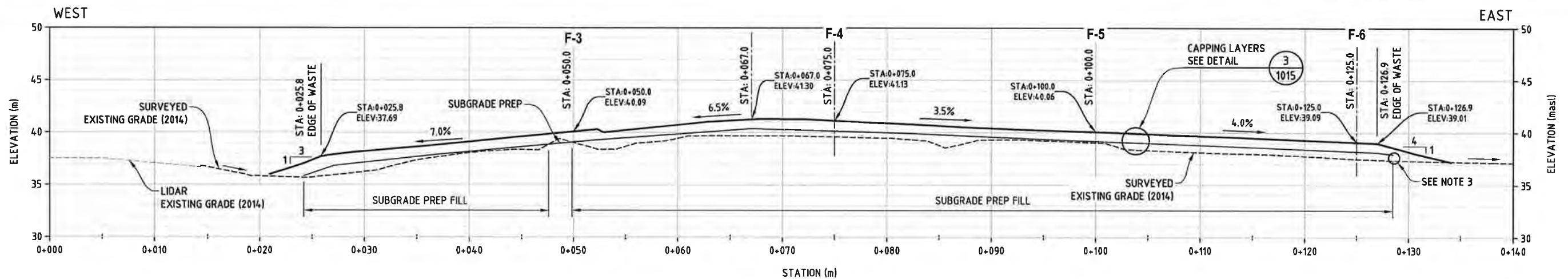


AS-BUILT DRAWINGS HAVE BEEN DEVELOPED BY WORLEYPARSONS CANADA SERVICES LTD. BASED ON ORIGINAL APPROVED ISSUED FOR CONSTRUCTION (IFC) DRAWINGS AND SPECIFICATIONS, SURVEY DATA AND RED LINING MARKUPS OF THE IFC DRAWINGS PROVIDED BY AECOM CANADA LTD. SURVEY DATA OBTAINED BY INUKSHUK GEOMATICS INC. (2014) AND AECOM CANADA LTD. (2015).

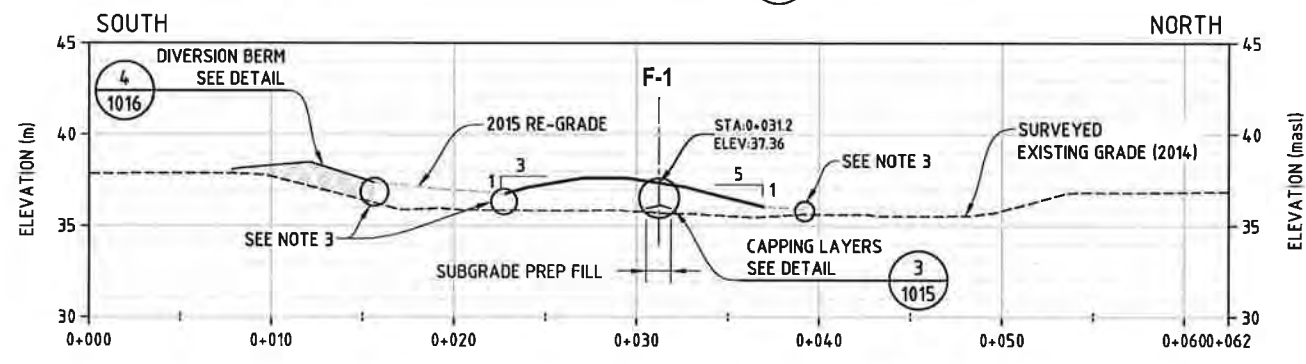
							B SHEET	SCALE SHOWN	ENGINEERING AND PERMIT STAMPS	CUSTOMER		
2	10-NOV-15	RE-ISSUED FOR AS-BUILT (FINAL)	PS	EM	-	-	NP	WORLEYPARSONS PROJECT No. 307074-00983			DRG No 307074-00983-00-CI-DGA-1007	REV 2
1	13-JAN-15	ISSUED FOR AS-BUILT	PS	EM	-	-	DD					
0	23-APR-14	ISSUED FOR CONSTRUCTION	CD	GG	GG	HT	DD					
B	13-SEP-13	ISSUED FOR TENDER	CD	GG	GG	HT	DD					
A	28-AUG-13	ISSUED FOR CLIENT REVIEW	CD	GG	GG	HT	DD					
REV	DATE	REVISION DESCRIPTION	DRN	CHKD	DES	ENG CHK	APPRD	CUST				



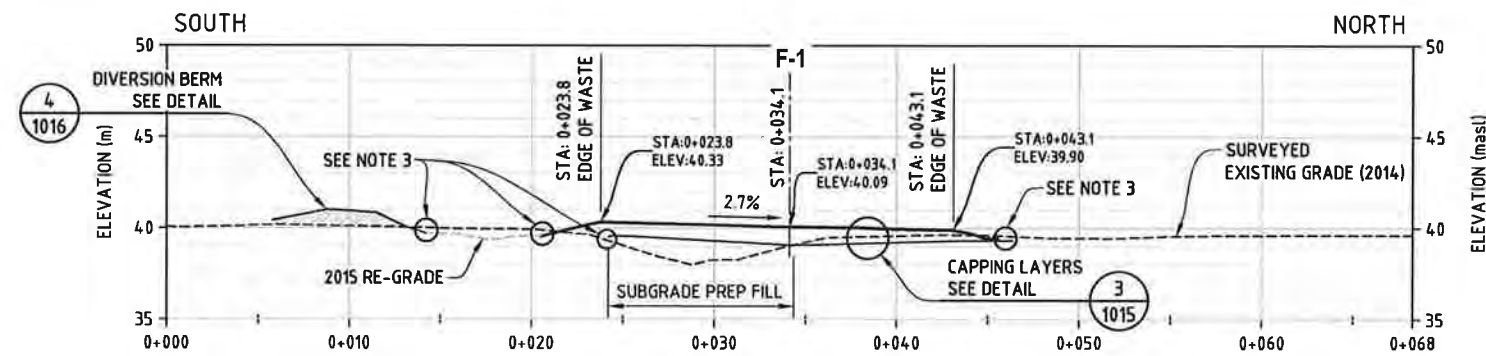
								B SHEET	SCALE	SHOWN	ENGINEERING AND PERMIT STAMPS	CUSTOMER	
2	10-NOV-15	RE-ISSUED FOR AS-BUILT (FINAL)	PS	EM	-	-	NP					BAR-C TUNUNUK POINT, NT AREA F (NORTH/CENTRAL) REGRADE AREAS - PLAN	
1	13-JAN-15	ISSUED FOR AS-BUILT	PS	EM	-	-	DD						
0	23-APR-14	ISSUED FOR CONSTRUCTION	CD	GG	GG	HT	DD						
B	13-SEP-13	ISSUED FOR TENDER	CD	GG	GG	HT	DD						
A	28-AUG-13	ISSUED FOR CLIENT REVIEW	CD	GG	GG	HT	DD						
REV	DATE	REVISION DESCRIPTION	DRN	CHKD	DES	ENG CHK	APPRD	CUST	WORLEYPARSONS PROJECT No. 307074-00983		"This drawing is prepared solely for the use of the contractual customer of WorleyParsons Canada Services Ltd. and WorleyParsons Canada Services Ltd. assumes no liability to any other party for any representations contained in this drawing."		
											DRG No	307074-00983-00-CI-DGA-1008	REV 2



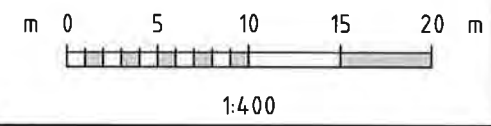
SECTION F-1
1:400



SECTION F-2
1:400



SECTION F-3
1:400



NOTE:
 1. ALL STATIONS ARE IN METERS (m).
 2. ALL ELEVATIONS ARE IN METERS ABOVE SEA LEVEL (masl).
 3. CAP STRUCTURE TERMINATION RELATIVE TO 2014 EXISTING GRADE SURVEY ELEVATION REPRESENTS DIFFERENCE IN EXTENT OF AS-BUILT SURVEY AND ELEVATION OF RE-GRADED SURFACE DUE TO RECLAMATION ACTIVITIES.

AS-BUILT DRAWINGS HAVE BEEN DEVELOPED BY WORLEYPARSONS CANADA SERVICES LTD. BASED ON ORIGINAL APPROVED ISSUED FOR CONSTRUCTION (IFC) DRAWINGS AND SPECIFICATIONS, SURVEY DATA AND RED LINING MARKUPS OF THE IFC DRAWINGS PROVIDED BY AECOM CANADA LTD. SURVEY DATA OBTAINED BY INUKSHUK GEOMATICS INC. (2014) AND AECOM CANADA LTD. (2015).

REV	DATE	REVISION DESCRIPTION	DRN	CHKD	DES	ENG	CHK	APPRD	CUST
2	10-NOV-15	RE-ISSUED FOR AS-BUILT (FINAL)	PS	EM	-	-	-	NP	
1	13-JAN-15	ISSUED FOR AS-BUILT	PS	EM	-	-	-	DD	
0	23-APR-14	ISSUED FOR CONSTRUCTION	CD	GG	GG	HT	DD		
C	23-SEP-13	ISSUED FOR TENDER	CD	GG	GG	HT	DD		
B	13-SEP-13	ISSUED FOR TENDER	CD	GG	GG	HT	DD		
A	28-AUG-13	ISSUED FOR CLIENT REVIEW	CD	GG	GG	HT	DD		

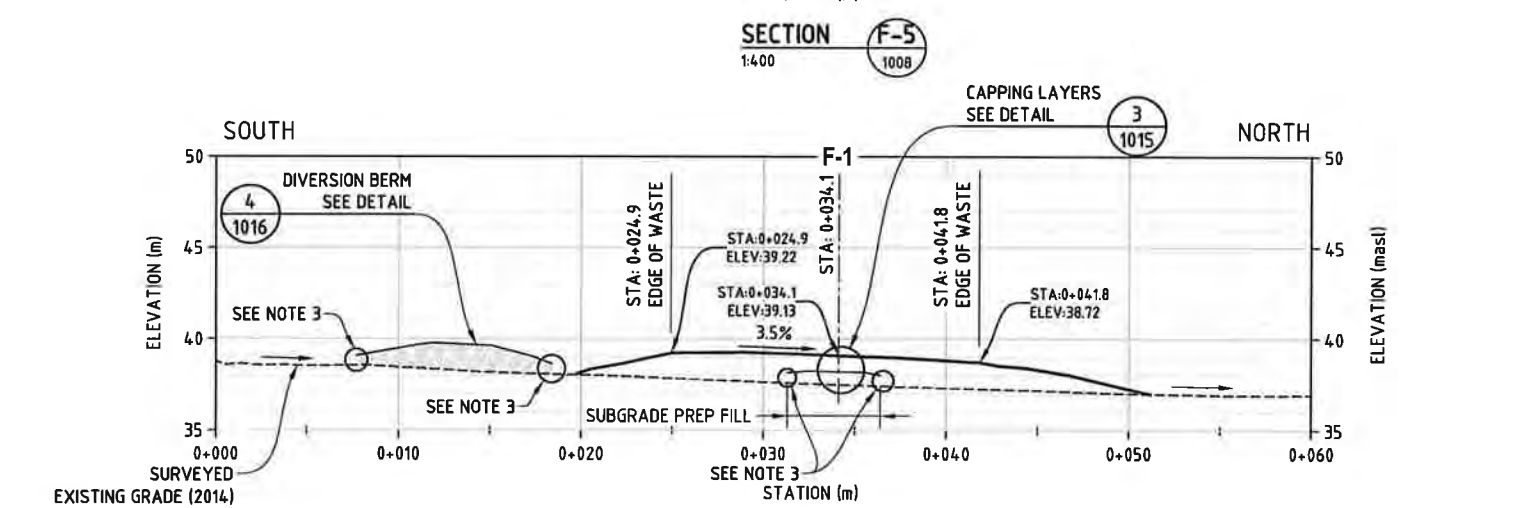
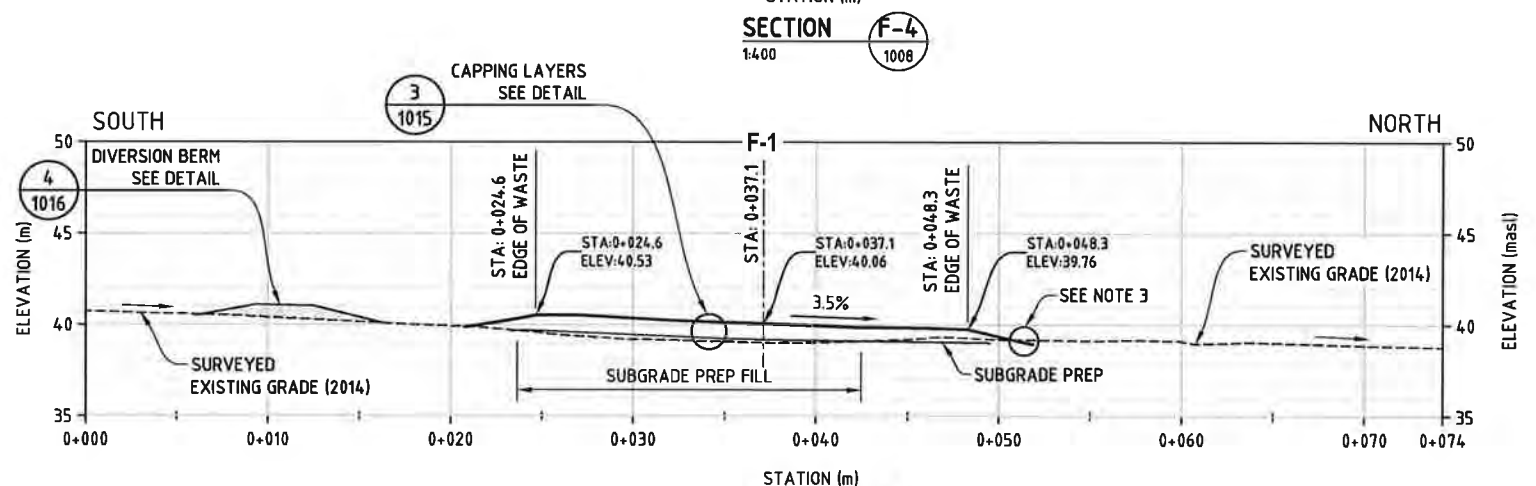
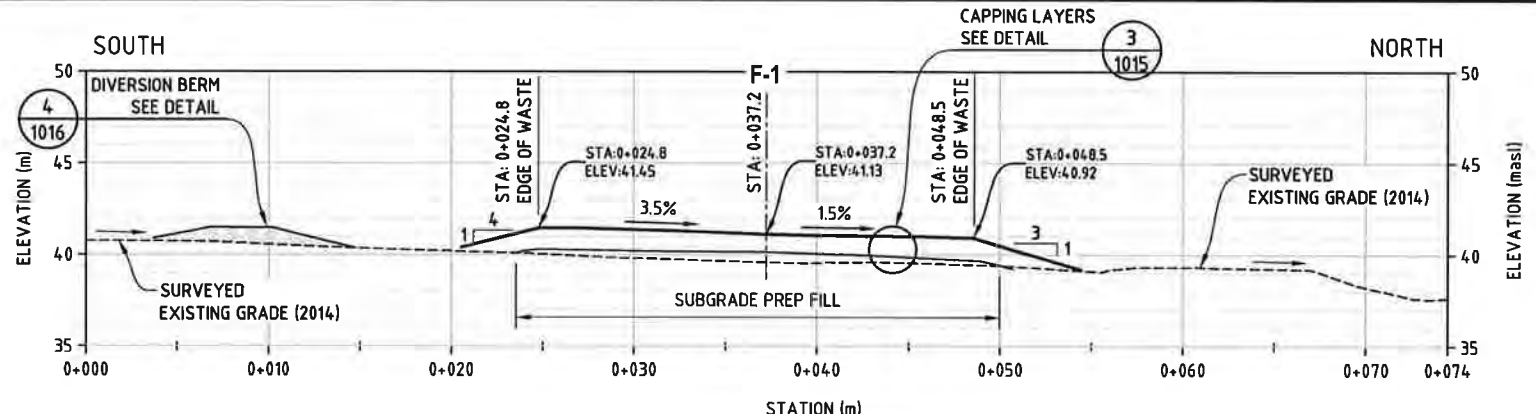
B SHEET SCALE SHOWN ENGINEERING AND PERMIT STAMPS CUSTOMER

WORLEYPARSONS PROJECT No. 307074-00983

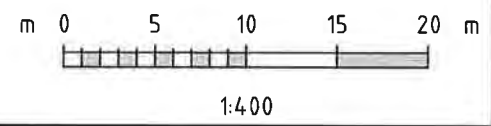
"This drawing is prepared solely for the use of the contractual customer of WorleyParsons Canada Services Ltd. and WorleyParsons Canada Services Ltd. assumes no liability to any other party for any representations contained in this drawing."

BAR-C TUNUNUK POINT, NT
AREA F (NORTH)
REGRADE AREA - SECTIONS

DRG No 307074-00983-00-CI-DGA-1009 REV 2



NOTE:
 1. ALL STATIONS ARE IN METERS (m).
 2. ALL ELEVATIONS ARE IN METERS ABOVE SEA LEVEL (masl).
 3. CAP STRUCTURE TERMINATION RELATIVE TO 2014 EXISTING GRADE SURVEY ELEVATION REPRESENTS DIFFERENCE IN EXTENT OF AS-BUILT SURVEY AND ELEVATION OF RE-GRADED SURFACE DUE TO RECLAMATION ACTIVITIES.



AS-BUILT DRAWINGS HAVE BEEN DEVELOPED BY WORLEYPARSONS CANADA SERVICES LTD. BASED ON ORIGINAL APPROVED ISSUED FOR CONSTRUCTION (IFC) DRAWINGS AND SPECIFICATIONS, SURVEY DATA AND RED LINING MARKUPS OF THE IFC DRAWINGS PROVIDED BY AECOM CANADA LTD. SURVEY DATA OBTAINED BY INUKSHUK GEOMATICS INC. (2014) AND AECOM CANADA LTD. (2015).

REV	DATE	REVISION DESCRIPTION	DRN	CHKD	DES	ENG	CHK	APPRD	CUST
2	10-NOV-15	RE-ISSUED FOR AS-BUILT (FINAL)	PS	EM	-	-	-	NP	
1	13-JAN-15	ISSUED FOR AS-BUILT	PS	EM	-	-	-	DD	
0	23-APR-14	ISSUED FOR CONSTRUCTION	CD	GG	GG	HT	DD		
B	13-SEP-13	ISSUED FOR TENDER	CD	GG	GG	HT	DD		
A	28-AUG-13	ISSUED FOR CLIENT REVIEW	CD	GG	GG	HT	DD		

B SHEET SCALE SHOWN

Oneway
to zero harm

PERMIT TO PRACTICE
 WORLEYPARSONS CANADA SERVICES LTD.
 (Signed: *Manjiv*)
 Date: *Nov 13, 2015*
 PERMIT NUMBER: P 029
 NWT/NR Association of Professional Engineers and Geoscientists

WORLEYPARSONS PROJECT No.
307074-00983

ENGINEERING AND PERMIT STAMPS

REGISTERED PROFESSIONAL ENGINEER
N.R. PAYNE
 LICENSEE
Abu 18, 2015
 NT/NU

CUSTOMER

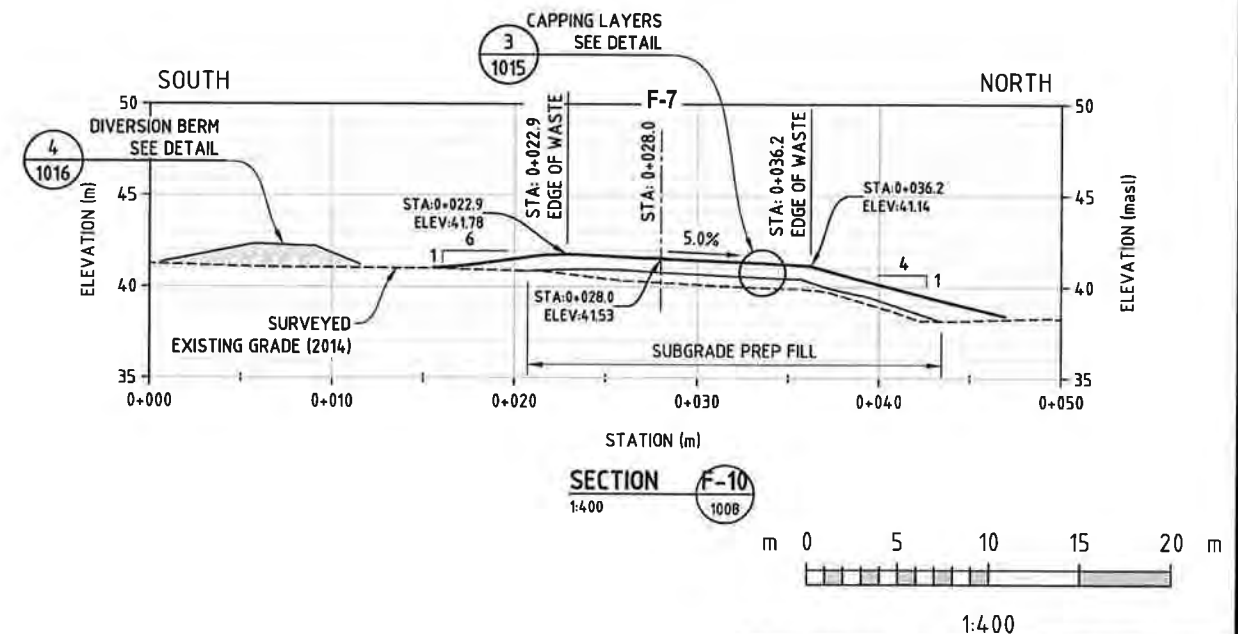
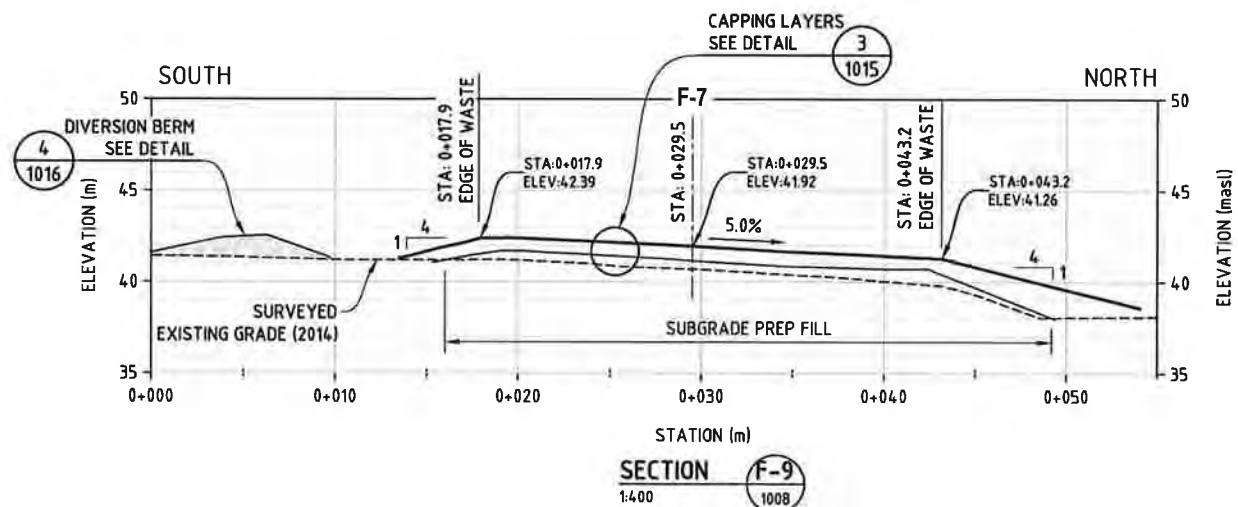
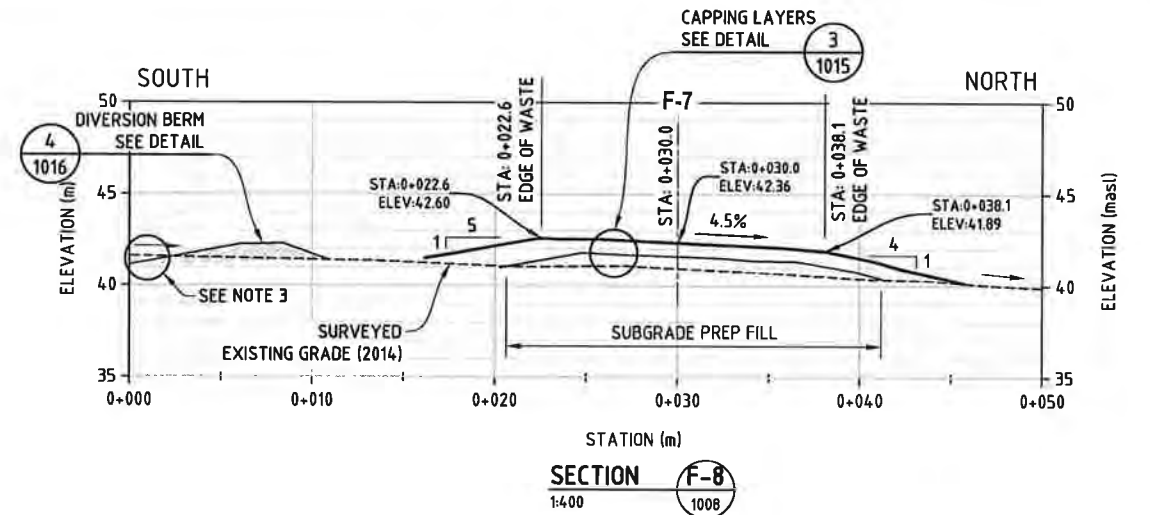
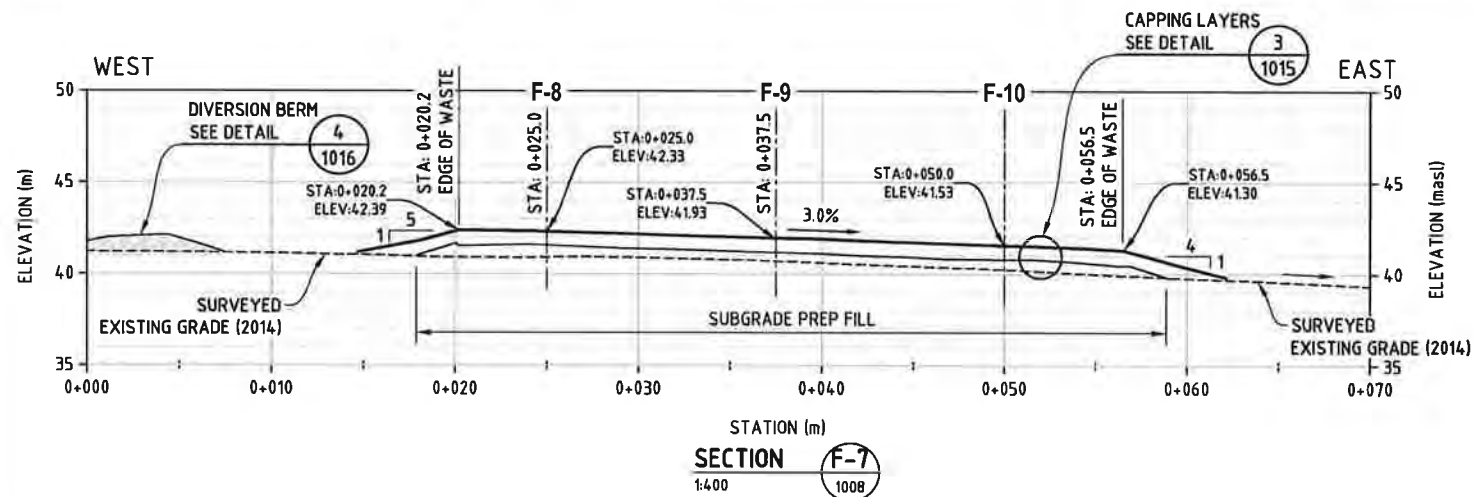
"This drawing is prepared solely for the use of the contractual customer of WorleyParsons Canada Services Ltd. and WorleyParsons Canada Services Ltd. assumes no liability to any other party for any representations contained in this drawing."

WorleyParsons
resources & energy

BAR-C TUNUNUK POINT, NT
 AREA F (NORTH)
 REGRADE AREA - SECTIONS

DRG No **307074-00983-00-CI-DGA-1010**

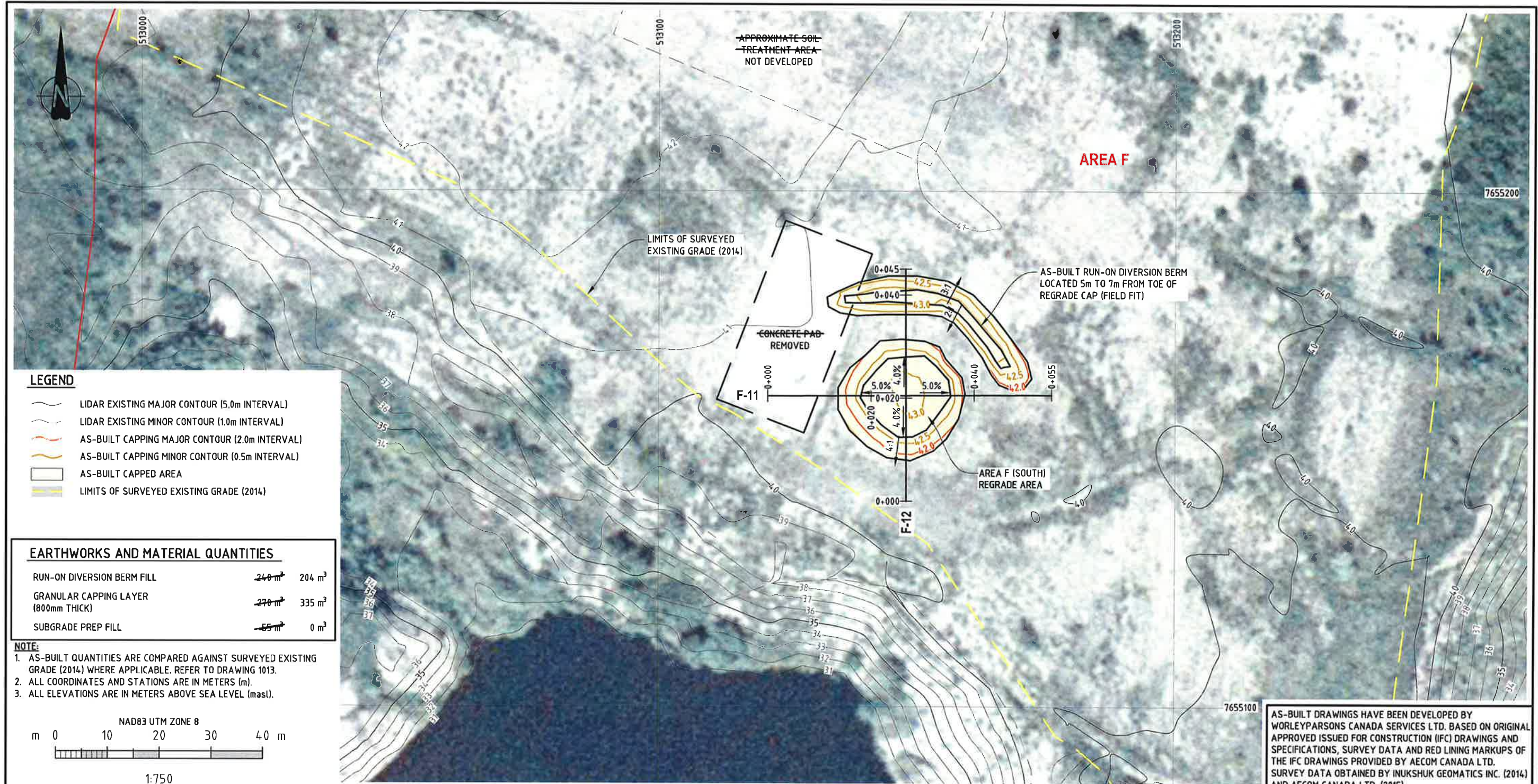
REV **2**



- NOTE:**
1. ALL STATIONS ARE IN METERS (m).
 2. ALL ELEVATIONS ARE IN METERS ABOVE SEA LEVEL (masl).
 3. CAP STRUCTURE TERMINATION RELATIVE TO 2014 EXISTING GRADE SURVEY ELEVATION REPRESENTS DIFFERENCE IN EXTENT OF AS-BUILT SURVEY AND ELEVATION OF RE-GRADED SURFACE DUE TO RECLAMATION ACTIVITIES.

AS-BUILT DRAWINGS HAVE BEEN DEVELOPED BY WORLEYPARSONS CANADA SERVICES LTD. BASED ON ORIGINAL APPROVED ISSUED FOR CONSTRUCTION (IFC) DRAWINGS AND SPECIFICATIONS, SURVEY DATA AND RED LINING MARKUPS OF THE IFC DRAWINGS PROVIDED BY AECOM CANADA LTD. SURVEY DATA OBTAINED BY INUKSHUK GEOMATICS INC. (2014) AND AECOM CANADA LTD. (2015).

REV	DATE	REVISION DESCRIPTION	DRN	CHKD	DES	ENG CHK	APPRD	CUST	B SHEET	SCALE	SHOWN	ENGINEERING AND PERMIT STAMPS	CUSTOMER	
2	10-NOV-15	RE-ISSUED FOR AS-BUILT (FINAL)	PS	EM	-	-	NP						<p>resources & energy</p> <p>BAR-C TUNUNUK POINT, NT</p> <p>AREA F (CENTRAL)</p> <p>REGRADE AREA - SECTIONS</p>	
1	13-JAN-15	ISSUED FOR AS-BUILT	PS	EM	-	-	DD							
0	23-APR-14	ISSUED FOR CONSTRUCTION	CD	GG	GG	HT	DD							
C	23-SEP-13	ISSUED FOR TENDER	CD	GG	GG	HT	DD							
B	13-SEP-13	ISSUED FOR TENDER	CD	GG	GG	HT	DD							
A	28-AUG-13	ISSUED FOR CLIENT REVIEW	CD	GG	GG	HT	DD				<p>to zero harm</p> <p>PERMIT TO PRACTICE WORLEYPARSONS CANADA SERVICES LTD. Signature: <i>Max Hanks</i> Date: <i>Nov 13, 2015</i> PERMIT NUMBER: P 029 NT/NU Association of Professional Engineers and Geoscientists</p>	<p>WORLEYPARSONS PROJECT No.</p> <p>307074-00983</p>	<p>DRG No</p> <p>307074-00983-00-CI-DGA-1011</p>	<p>REV</p> <p>2</p>



LEGEND

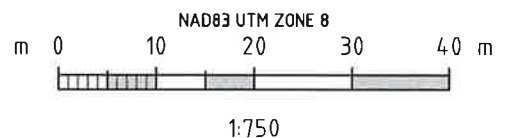
- LIDAR EXISTING MAJOR CONTOUR (5.0m INTERVAL)
- LIDAR EXISTING MINOR CONTOUR (1.0m INTERVAL)
- AS-BUILT CAPPING MAJOR CONTOUR (2.0m INTERVAL)
- AS-BUILT CAPPING MINOR CONTOUR (0.5m INTERVAL)
- AS-BUILT CAPPED AREA
- LIMITS OF SURVEYED EXISTING GRADE (2014)

EARTHWORKS AND MATERIAL QUANTITIES

RUN-ON DIVERSION BERM FILL	240 m ³	204 m ³
GRANULAR CAPPING LAYER (800mm THICK)	270 m ³	335 m ³
SUBGRADE PREP FILL	65 m ³	0 m ³

NOTE:

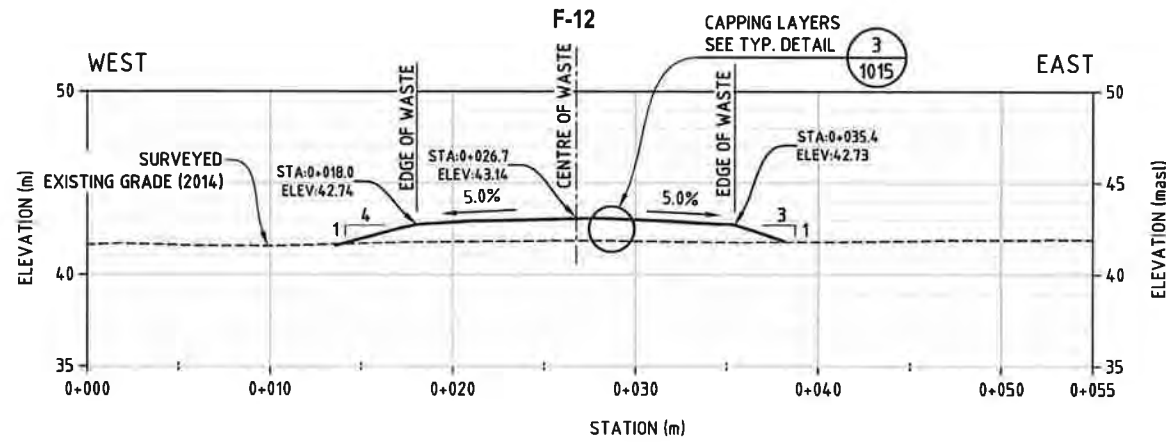
- AS-BUILT QUANTITIES ARE COMPARED AGAINST SURVEYED EXISTING GRADE (2014) WHERE APPLICABLE. REFER TO DRAWING 1013.
- ALL COORDINATES AND STATIONS ARE IN METERS (m).
- ALL ELEVATIONS ARE IN METERS ABOVE SEA LEVEL (masl).



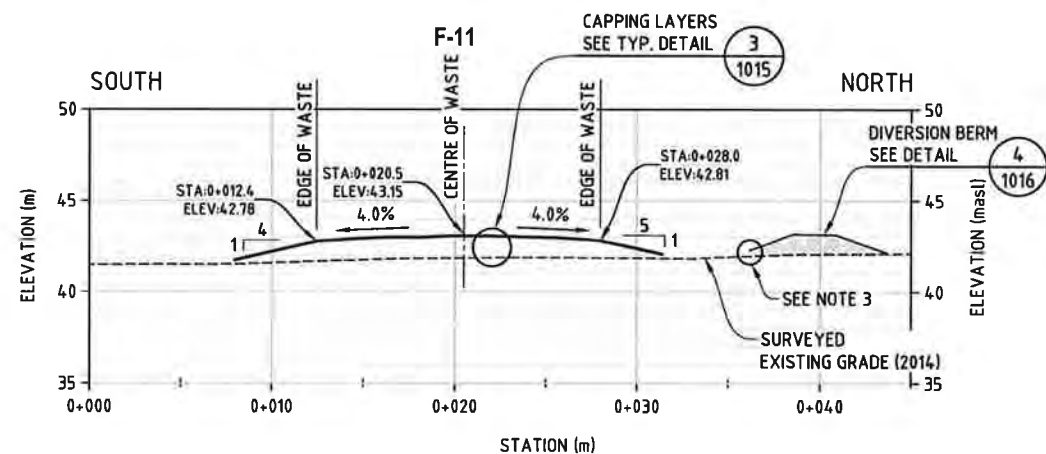
AS-BUILT DRAWINGS HAVE BEEN DEVELOPED BY WORLEYPARSONS CANADA SERVICES LTD. BASED ON ORIGINAL APPROVED ISSUED FOR CONSTRUCTION (IFC) DRAWINGS AND SPECIFICATIONS, SURVEY DATA AND RED LINING MARKUPS OF THE IFC DRAWINGS PROVIDED BY AECOM CANADA LTD. SURVEY DATA OBTAINED BY INUKSHUK GEOMATICS INC. (2014) AND AECOM CANADA LTD. (2015).

								B SHEET	SCALE	SHOWN	ENGINEERING AND PERMIT STAMPS	CUSTOMER
3	10-NOV-15	RE-ISSUED FOR AS-BUILT (FINAL)	PS	EM	-	-	NP				BAR-C TUNUNUK POINT, NT AREA F (SOUTH) REGRADE AREA - PLAN	
2	13-JAN-15	ISSUED FOR AS-BUILT	PS	EM	-	-	DD					
1	30-JUL-14	RE-ISSUED FOR CONSTRUCTION	FY	GG	GG	HT	DD					
0	23-APR-14	ISSUED FOR CONSTRUCTION	CD	GG	GG	HT	DD					
C	23-SEP-13	ISSUED FOR TENDER	CD	GG	GG	HT	DD					
B	13-SEP-13	ISSUED FOR TENDER	CD	GG	GG	HT	DD	WORLEYPARSONS PROJECT No. 307074-00983		DRG No 307074-00983-00-CI-DGA-1012	REV 3	
A	28-AUG-13	ISSUED FOR CLIENT REVIEW	CD	GG	GG	HT	DD	"This drawing is prepared solely for the use of the contractual customer of WorleyParsons Canada Services Ltd. and WorleyParsons Canada Services Ltd. assumes no liability to any other party for any representations contained in this drawing."				
REV	DATE	REVISION DESCRIPTION	DRN	CHKD	DES	ENG	CHKD	APPRD	CUST			

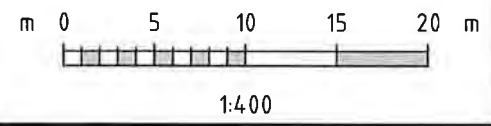
USER NAME: parm.sohanpal
 PLOT DATE & TIME: 10/11/2015 10:32:05 AM
 SAVE DATE & TIME: 3/11/2015 9:12:42 AM



SECTION F-11
1:400



SECTION F-12
1:400



NOTE:
 1. ALL STATIONS ARE IN METERS (m).
 2. ALL ELEVATIONS ARE IN METERS ABOVE SEA LEVEL (masl).
 3. CAP STRUCTURE TERMINATION RELATIVE TO 2014 EXISTING GRADE SURVEY ELEVATION REPRESENTS DIFFERENCE IN EXTENT OF AS-BUILT SURVEY AND ELEVATION OF RE-GRADED SURFACE DUE TO RECLAMATION ACTIVITIES.

AS-BUILT DRAWINGS HAVE BEEN DEVELOPED BY WORLEYPARSONS CANADA SERVICES LTD. BASED ON ORIGINAL APPROVED ISSUED FOR CONSTRUCTION (IFC) DRAWINGS AND SPECIFICATIONS, SURVEY DATA AND RED LINING MARKUPS OF THE IFC DRAWINGS PROVIDED BY AECOM CANADA LTD. SURVEY DATA OBTAINED BY INUKSHUK GEOMATICS INC. (2014) AND AECOM CANADA LTD. (2015).

REV	DATE	REVISION DESCRIPTION	DRN	CHKD	DES	ENG CHK	APPRD	CUST
3	10-NOV-15	RE-ISSUED FOR AS-BUILT (FINAL)	PS	EM	-	-	NP	
2	13-JAN-15	ISSUED FOR AS-BUILT	PS	EM	-	-	DD	
1	30-JUL-14	RE-ISSUED FOR CONSTRUCTION	FY	GG	GG	HT	DD	
0	23-APR-14	ISSUED FOR CONSTRUCTION	CD	GG	GG	HT	DD	
B	13-SEP-13	ISSUED FOR TENDER	CD	GG	GG	HT	DD	
A	28-AUG-13	ISSUED FOR CLIENT REVIEW	CD	GG	GG	HT	DD	

B SHEET SCALE SHOWN ENGINEERING AND PERMIT STAMPS CUSTOMER

WORLEYPARSONS PROJECT No.
307074-00983

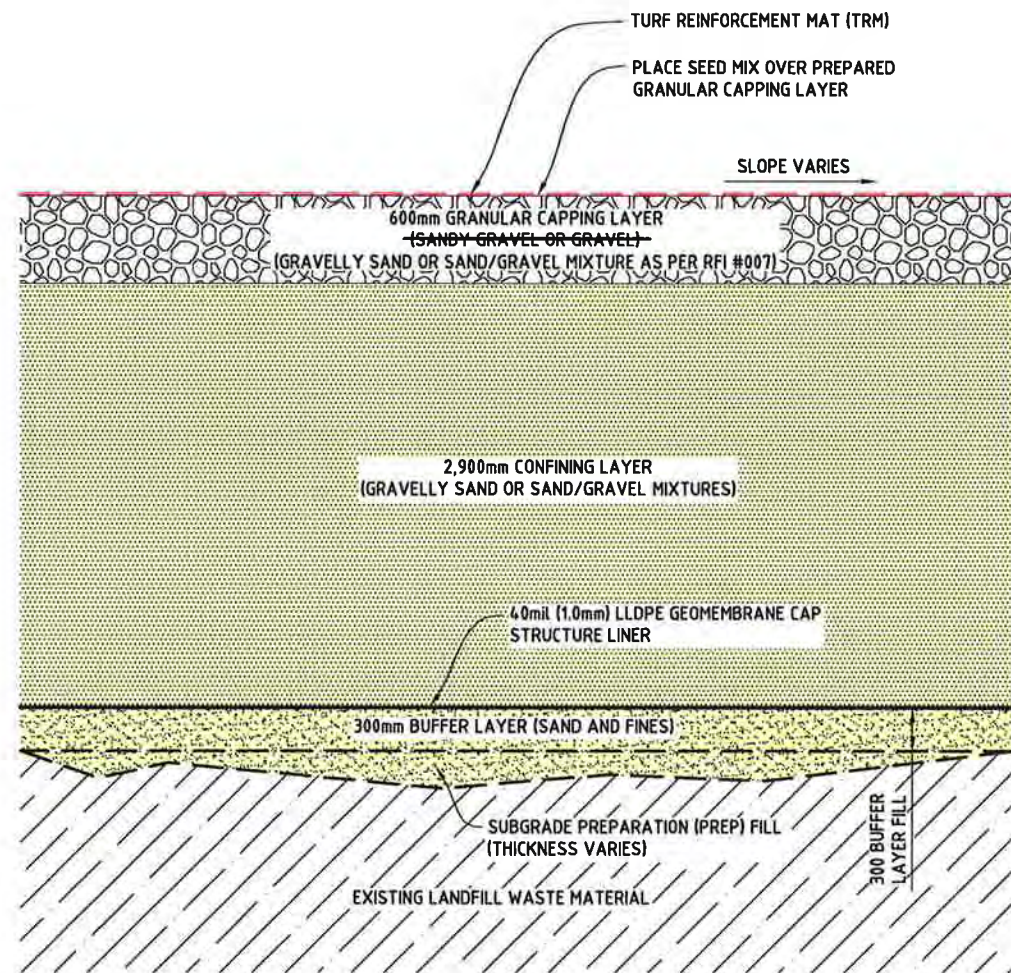
"This drawing is prepared solely for the use of the contractual customer of WorleyParsons Canada Services Ltd. and WorleyParsons Canada Services Ltd. assumes no liability to any other party for any representations contained in this drawing."

BAR-C TUNUNUK POINT, NT
AREA F (SOUTH)
REGRADE AREA - SECTIONS

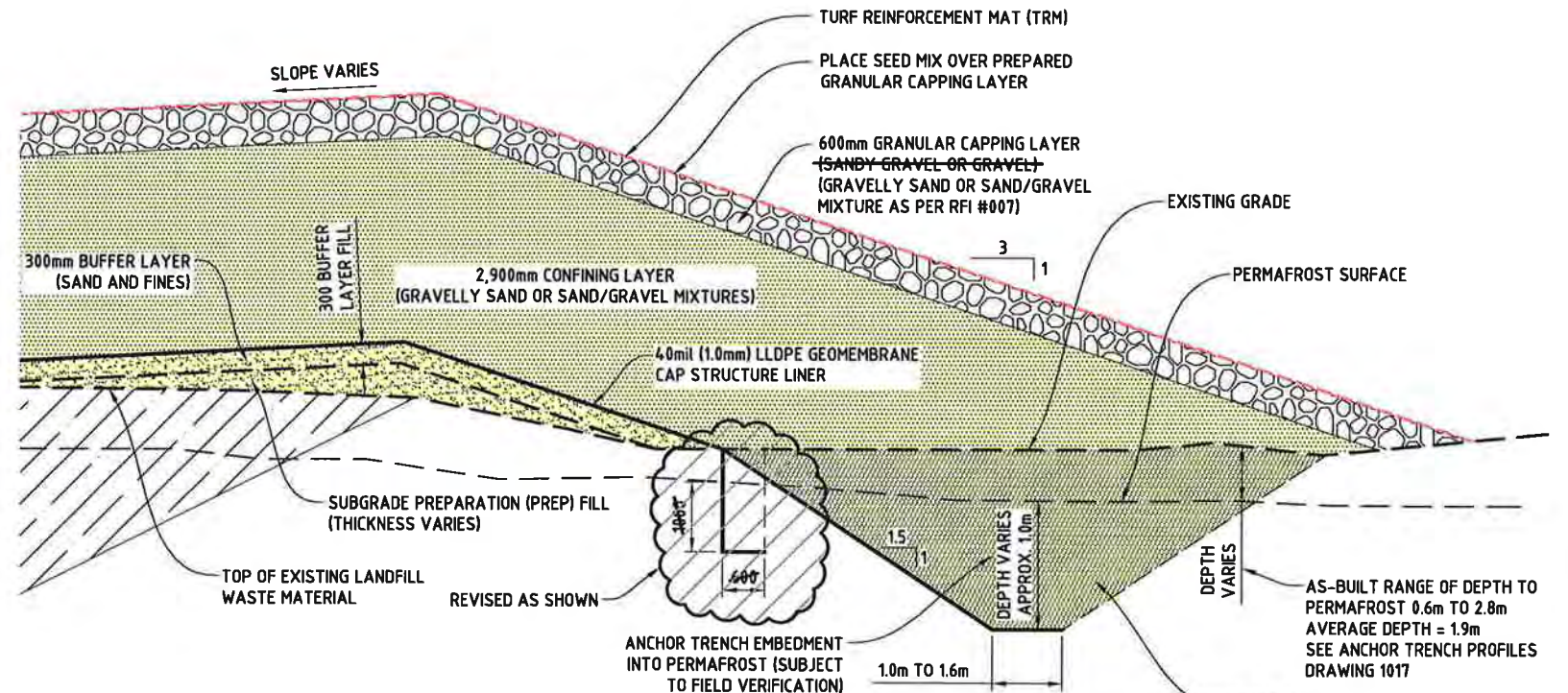
DRG No

307074-00983-00-CI-DGA-1013

REV
3



LANDFILL CAP STRUCTURE - AREAS A AND B 1
 1:50
 1003
 1004
 1006
 1007

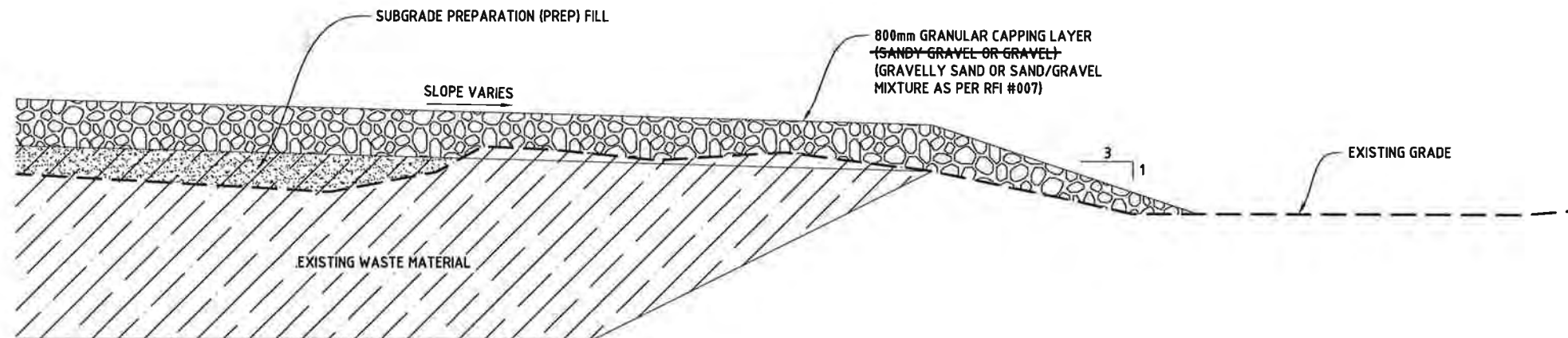


LANDFILL CAP STRUCTURE / ANCHOR TRENCH - AREAS A AND B 2
 1:100
 1003
 1004
 1006
 1007

NOTE:
 1. DIMENSIONS ARE IN MILLIMETERS (mm) UNLESS NOTED OTHERWISE.

AS-BUILT DRAWINGS HAVE BEEN DEVELOPED BY WORLEYPARSONS CANADA SERVICES LTD. BASED ON ORIGINAL APPROVED ISSUED FOR CONSTRUCTION (IFC) DRAWINGS AND SPECIFICATIONS, SURVEY DATA AND RED LINING MARKUPS OF THE IFC DRAWINGS PROVIDED BY AECOM CANADA LTD. SURVEY DATA OBTAINED BY INUKSHUK GEOMATICS INC. (2014) AND AECOM CANADA LTD. (2015).

REV	DATE	REVISION DESCRIPTION	DRN	CHKD	DES	ENG	CHK	APPRD	CUST	B SHEET	SCALE	SHOWN	ENGINEERING AND PERMIT STAMPS	CUSTOMER	DRG No	REV	
2	10-NOV-15	RE-ISSUED FOR AS-BUILT (FINAL)	PS	EM	-	-	-	NP							BAR-C TUNUNUK POINT, NT AREAS A AND B LANDFILL CAP STRUCTURE DETAILS	307074-00983-00-CI-DGA-1014	2
1	13-JAN-15	ISSUED FOR AS-BUILT	PS	EM	-	-	DD										
0	23-APR-14	ISSUED FOR CONSTRUCTION	CD	GG	GG	HT	DD										
B	13-SEP-13	ISSUED FOR TENDER	CD	GG	GG	HT	DD										
A	28-AUG-13	ISSUED FOR CLIENT REVIEW	CD	GG	GG	HT	DD										
										WORLEYPARSONS PROJECT No. 307074-00983		*This drawing is prepared solely for the use of the contractual customer of WorleyParsons Canada Services Ltd. and WorleyParsons Canada Services Ltd. assumes no liability to any other party for any representations contained in this drawing.*					



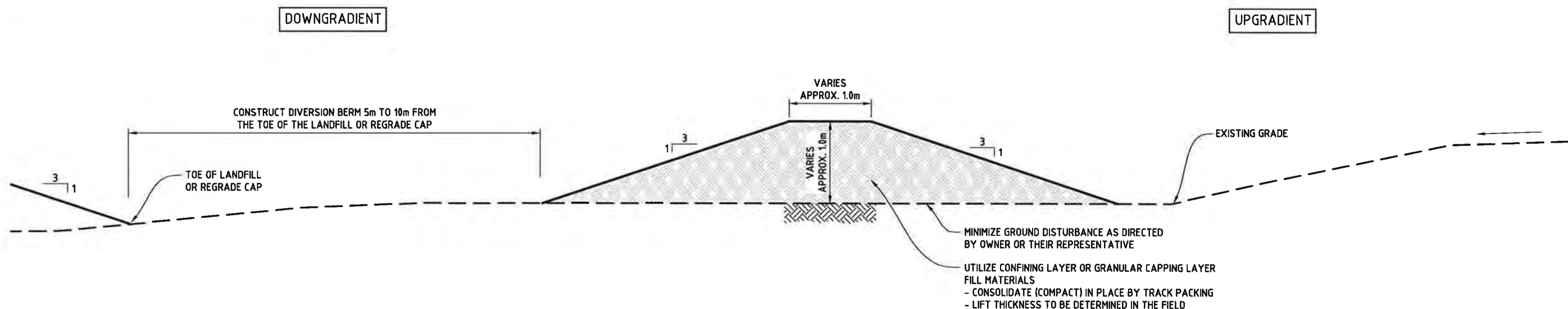
REGRADE CAP STRUCTURE - AREA F

1:100

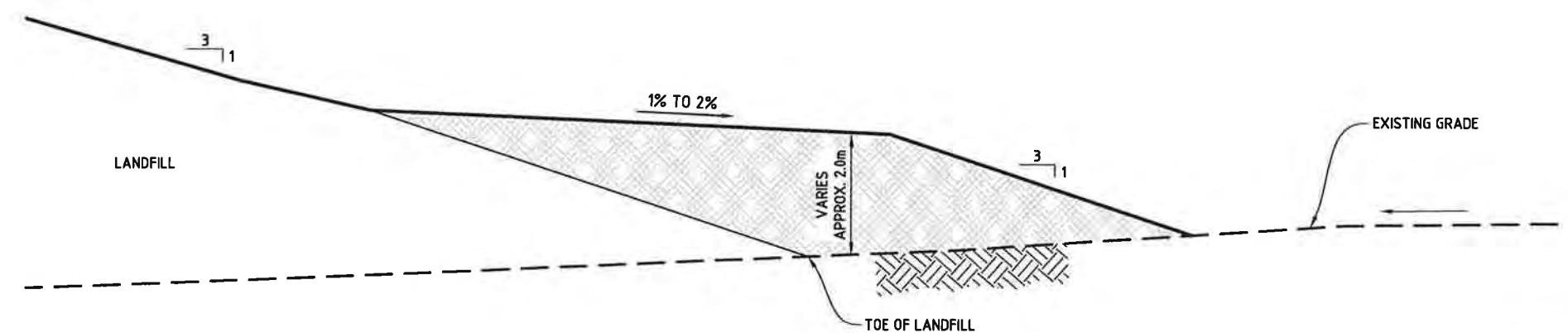
3
1009
1010
1011
1013

AS-BUILT DRAWINGS HAVE BEEN DEVELOPED BY WORLEYPARSONS CANADA SERVICES LTD. BASED ON ORIGINAL APPROVED ISSUED FOR CONSTRUCTION (IFC) DRAWINGS AND SPECIFICATIONS, SURVEY DATA AND RED LINING MARKUPS OF THE IFC DRAWINGS PROVIDED BY AECOM CANADA LTD. SURVEY DATA OBTAINED BY INUKSHUK GEOMATICS INC. (2014) AND AECOM CANADA LTD. (2015).

REV	DATE	REVISION DESCRIPTION	DRN	CHKD	DES	ENG CHK	APPRD	CUST	B SHEET	SCALE	SHOWN	ENGINEERING AND PERMIT STAMPS	CUSTOMER	DRG No	REV
2	10-NOV-15	RE-ISSUED FOR AS-BUILT (FINAL)	PS	EM	-	-	NP						<p>BAR-C TUNUNUK POINT, NT AREA F REGRADE CAP STRUCTURE DETAIL</p>	307074-00983-00-CI-DGA-1015	2
1	13-JAN-15	ISSUED FOR AS-BUILT	PS	EM	-	-	DD								
0	23-APR-14	ISSUED FOR CONSTRUCTION	CD	GG	GG	HT	DD								
C	23-SEP-13	ISSUED FOR TENDER	CD	GG	GG	HT	DD								
B	13-SEP-13	ISSUED FOR TENDER	CD	GG	GG	HT	DD								
A	28-AUG-13	ISSUED FOR CLIENT REVIEW	CD	GG	GG	HT	DD								
WORLEYPARSONS PROJECT No. 307074-00983									"This drawing is prepared solely for the use of the contractual customer of WorleyParsons Canada Services Ltd. and WorleyParsons Canada Services Ltd. assumes no liability to any other party for any representations contained in this drawing."						



**AREA F WDA RE-GRADES
SURFACE RUN-ON DIVERSION BERM** (4)
1:50
1009
1010
1011
1013



**AREA A AND B LANDFILL CAP
REVISED SURFACE RUN-ON DIVERSION BERM** (5)
1:100
1003
1004
1006
1007

NOTE:
1. DIMENSIONS ARE IN METERS (m) UNLESS NOTED OTHERWISE.

AS-BUILT DRAWINGS HAVE BEEN DEVELOPED BY WORLEYPARSONS CANADA SERVICES LTD. BASED ON ORIGINAL APPROVED ISSUED FOR CONSTRUCTION (IFC) DRAWINGS AND SPECIFICATIONS, SURVEY DATA AND RED LINING MARKUPS OF THE IFC DRAWINGS PROVIDED BY AECOM CANADA LTD. SURVEY DATA OBTAINED BY INUKSHUK GEOMATICS INC. (2014) AND AECOM CANADA LTD. (2015).

REV	DATE	REVISION DESCRIPTION	DRN	CHKD	DES	ENG CHK	APPRD	CUST
2	10-NOV-15	RE-ISSUED FOR AS-BUILT (FINAL)	PS	EM	-	-	NP	
1	13-JAN-15	ISSUED FOR AS-BUILT	PS	EM	-	-	DD	
0	23-APR-14	ISSUED FOR CONSTRUCTION	CD	GG	GG	HT	DD	
A	13-SEP-13	ISSUED FOR TENDER	CD	GG	GG	HT	DD	

B SHEET SCALE SHOWN ENGINEERING AND PERMIT STAMPS CUSTOMER

Oneway
to zero harm
PERMIT TO PRACTICE
WORLEYPARSONS CANADA SERVICES LTD.
Signature: *N.R. Payne*
Date: *Nov 13, 2015*
PERMIT NUMBER: P 020
NWTNU Association of Professional Engineers and Geoscientists

REGISTERED PROFESSIONAL ENGINEER
N.R. PAYNE
LICENSEE
Nov 12, 2015
NT/NU

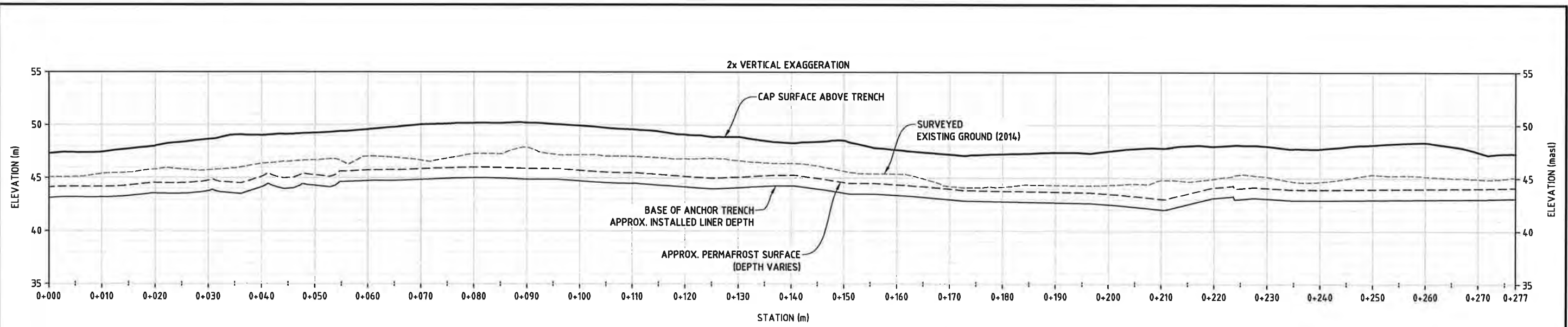
WORLEYPARSONS PROJECT No.
307074-00983

"This drawing is prepared solely for the use of the contractual customer of WorleyParsons Canada Services Ltd. and WorleyParsons Canada Services Ltd. assumes no liability to any other party for any representations contained in this drawing."

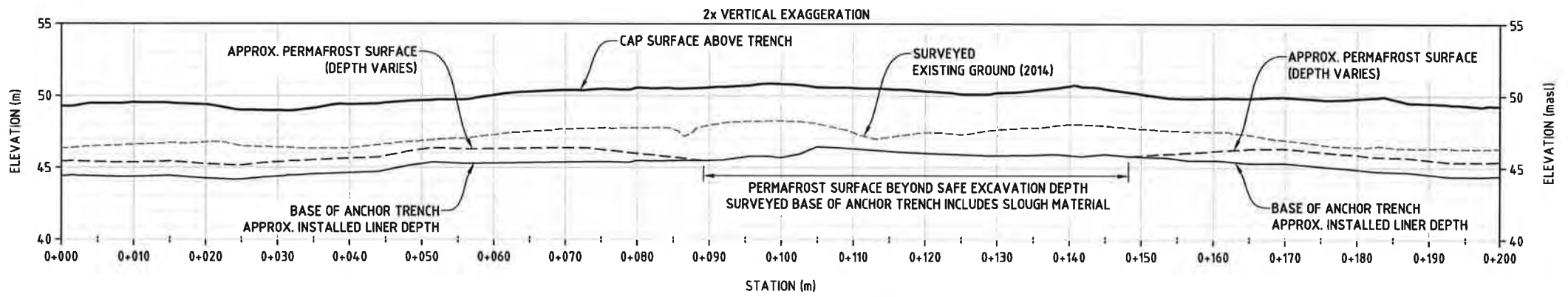
WorleyParsons
resources & energy

**BAR-C TUNUNUK POINT, NT
DIVERSION BERM
DETAILS**

DRG No **307074-00983-00-CI-DGA-1016** REV **2**



AREA A LANDFILL ANCHOR TRENCH PROFILE A
 H 1:750
 V 1:375



AREA B LANDFILL ANCHOR TRENCH PROFILE B
 H 1:750
 V 1:375

NOTE:
 1. ALL STATIONS ARE IN METERS (m).
 2. ALL ELEVATIONS ARE IN METERS ABOVE SEA LEVEL (masl).

AS-BUILT DRAWINGS HAVE BEEN DEVELOPED BY WORLEYPARSONS CANADA SERVICES LTD. BASED ON ORIGINAL APPROVED ISSUED FOR CONSTRUCTION (IFC) DRAWINGS AND SPECIFICATIONS, SURVEY DATA AND RED LINING MARKUPS OF THE IFC DRAWINGS PROVIDED BY AECOM CANADA LTD. SURVEY DATA OBTAINED BY INUKSHUK GEOMATICS INC. (2014) AND AECOM CANADA LTD. (2015).

								B SHEET	SCALE	SHOWN	ENGINEERING AND PERMIT STAMPS	CUSTOMER		
												BAR-C TUNUNUK POINT, NT AREA A AND B LANDFILL ANCHOR TRENCH PROFILES		
1	10-NOV-15	RE-ISSUED FOR AS-BUILT (FINAL)	PS	EM	-	-	NP	WORLEYPARSONS PROJECT No. 307074-00983		*This drawing is prepared solely for the use of the contractual customer of WorleyParsons Canada Services Ltd. and WorleyParsons Canada Services Ltd. assumes no liability to any other party for any representations contained in this drawing.*		DRG No	307074-00983-00-CI-DGA-1017	REV 1
REV	DATE	REVISION DESCRIPTION	DRN	CHKD	DES	ENG	CHKD	APPRD	CUST					